



NEW YORK UNIVERSITY

Sponsored by
NYU Post Graduate Medical School
and the Department of Radiology

Controversies in Musculoskeletal Imaging:

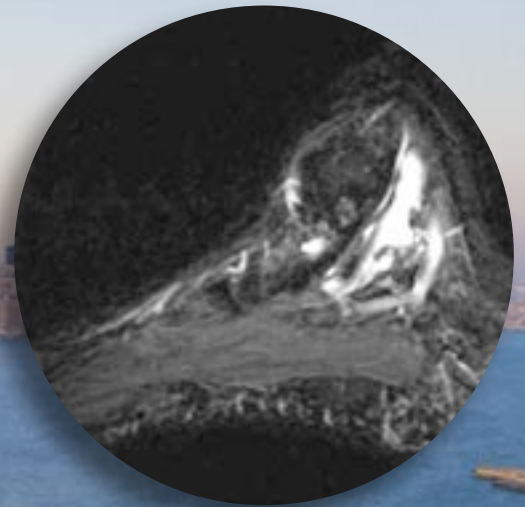
A CME Course Unlike the Others

APRIL 24–25, 2004

The NYU Sports Medicine Imaging Course

MAY 21–23, 2004

**MEETING LOCATIONS:
HOSPITAL FOR JOINT DISEASES
ORTHOPAEDIC INSTITUTE
NEW YORK CITY**



COURSE DIRECTOR:
Mark E. Schweitzer, M.D., B.S.

Professor of Radiology
Chief of Musculoskeletal Imaging
New York University Medical School
Chief of Radiology
Hospital for Joint Diseases
Orthopaedic Institute



Controversies in Musculoskeletal Overview & General Information

Saturday, April 24 and Sunday, April 25, 2004
Hospital for Joint Diseases
Orthopaedic Institute
301 E. 17th Street
New York, New York

Course Director

Mark E. Schweitzer, M.D., B.S.

Professor of Radiology
Chief, Musculoskeletal Imaging
Chief of Radiology
Hospital for Joint Diseases
Orthopaedic Institute

NYU Faculty

Susan L. Campeas, M.D.

Assistant Professor of Radiology

Michael B. Mechlin, M.D.

Assistant Professor of Radiology

Theodore T. Miller, M.D.

Chief, Division of Musculoskeletal Imaging
North Shore – LIJ Health System
Director, North Shore Imaging Associates, PC
Associate Professor of Radiology
NYU School of Medicine

Sandra L. Moore, M.D.

Assistant Professor of Radiology

George C. Nomikos, M.D.

Assistant Professor of Radiology

Fabio Ponzo, M.D.

Assistant Professor of Radiology

Mahvash Rafii, M.D.

Professor of Radiology

Leon D. Rybak, M.D.

Assistant Professor of Radiology
Effective January, 2004

Mark E. Schweitzer, M.D., B.S.

Professor of Radiology
Chief, Musculoskeletal Imaging
Chief of Radiology
Hospital for Joint Disease

Overview

Musculoskeletal imaging is such a rapidly evolving area that when CME courses are planned, they are often out of date by the first day of the program. We have, however, selected 14 topics of current interest which will be covered in-depth. Not only will alternate sides of the issue be discussed but various clinical theories will be brainstormed. Our 2004 "Controversies in Musculoskeletal Imaging Conference" will feature post-operative studies, the diabetic foot, the role of musculoskeletal nuclear medicine (with an emphasis on PET), when to use MR contrast agents, new pulse sequences, multi-slice CT, innovative procedures and high- versus low-field strength imaging. The forum will be open and interactive with a chance for both the faculty and members of the audience to delve into the 14 topics in a great degree of detail from various points of view.

Target Audience

Radiologists, orthopedic surgeons and allied health professionals.

Educational Objectives

To increase the understanding of appropriate uses and interpretation of musculoskeletal imaging through thorough discussion of 14 different topics of current interest.

Accreditation

The NYU Post-Graduate Medical School is accredited by the Accreditation Council for Continuing Medical Education (ACCME) to sponsor continuing medical education for physicians.

The NYU Post-Graduate Medical School designates that these continuing medical education activities meet the criteria for credit hours in Category I of the Physician's Recognition Award of the American Medical Association.

7 Hours Saturday Only

7 Hours Sunday Only

14 Hours in Category I Total

Disclosure Statement

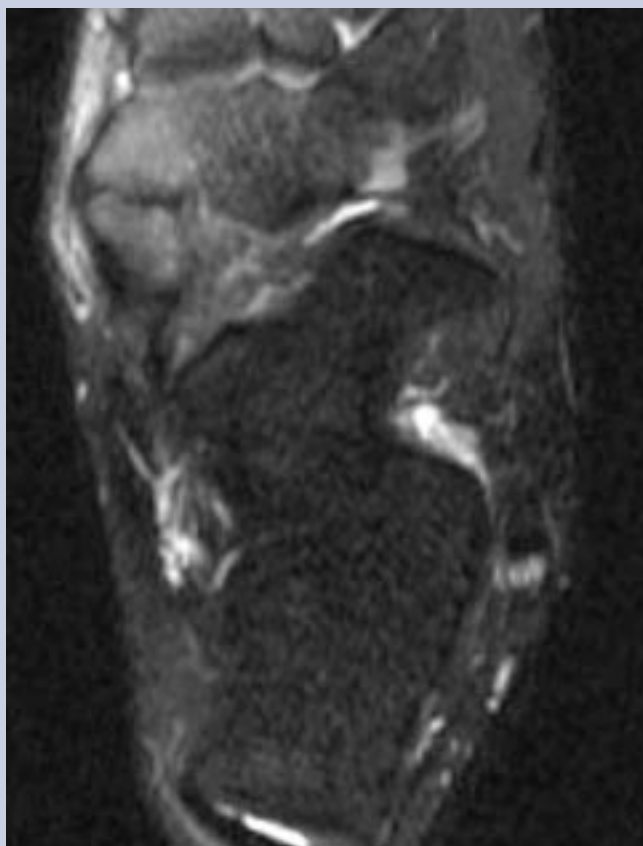
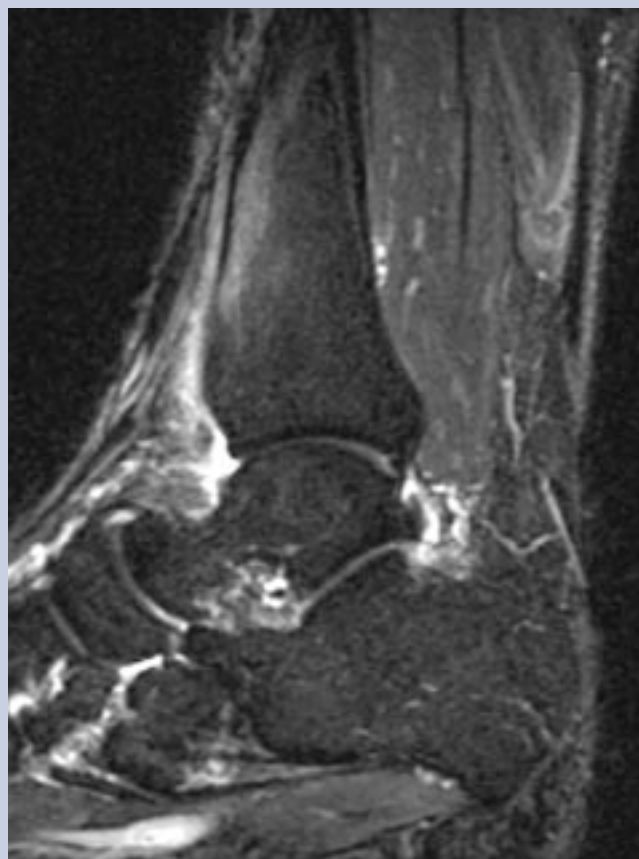
The NYU Post-Graduate Medical School adheres to ACCME Standards and regarding commercial support of continuing medical education. Disclosure of any commercial relationships as well as off-label or investigational use of any drug, device or procedure by the faculty, will be made known at the course.



Imaging: A CME Course Unlike the Others Program

SATURDAY, APRIL 24, 2004

- 7:30-8:30 a.m. **Registration and Continental Breakfast**
HJD Auditorium (Lobby Level)
- 8:30 a.m. **Welcome**
Mark E. Schweitzer, M.D., B.S.
- 8:45 a.m. **MRI AND SONOGRAPHY OF THE MUSCULOSKELETAL SYSTEM: WHEN TO PULSE, WHEN TO SOUND**
Theodore T. Miller, M.D.
- 9:30 a.m. **MRI AND MULTIDETECTOR CT OF THE MUSCULOSKELETAL SYSTEM: WHEN TO IONIZE, WHEN TO EXCITE**
Theodore T. Miller, M.D.
- 10:15 a.m. **Coffee Break**
- 10:30 a.m. **THE DIABETIC FOOT**
Sandra L. Moore, M.D.
- 11:30 a.m. **ADVANCED IMAGING OF HARDWARE**
George C. Nomikos, M.D.
- 12:30 p.m. **Lunch**
- 1:45 p.m. **THE POST-OPERATIVE SHOULDER**
Mahvash Rafii, M.D.
- 2:45 p.m. **RECENT ADVANCES IN NUCLEAR MEDICINE WITH AN EMPHASIS ON PET**
Fabio Ponzio, M.D.
- 3:45 p.m. **MUSCULOSKELETAL INFECTION**
Sandra L. Moore, M.D.
- 4:45 p.m. **Final Questions and Discussion**
- 5-6:00 p.m. **Wine & Cheese Reception (HJD)**



SUNDAY, APRIL 25, 2004

- 8:00 a.m. **Continental Breakfast**
HJD Auditorium Lobby
- 8:30 a.m. **THE POST-OPERATIVE ANKLE**
Mark E. Schweitzer, M.D., B.S.
- 9:30 a.m. **NEW MR SEQUENCES**
Susan L. Campeas, M.D.
- 10:30 a.m. **Coffee Break**
- 10:45 a.m. **WHEN TO USE CONTRAST**
Mark E. Schweitzer, M.D., B.S.
- 11:45 a.m. **MRI OF THE SHOULDER GIRDLE: BEYOND THE CUFF AND LABRUM**
George C. Nomikos, M.D.
- 12:45 p.m. **Lunch**
- 2:00 p.m. **INNOVATIVE MUSCULOSKELETAL PROCEDURES: PREDICTIONS FOR THE NEXT DECADE**
Leon D. Ryback, M.D.
- 3:00 p.m. **NOMENCLATURE OF DEGENERATIVE DISC DISEASE**
Michael B. Mechlin, M.D.
- 4:00 p.m. **HIGH- VERSUS LOW-FIELD STRENGTH**
Mark E. Schweitzer, M.D., B.S.
- 5:00 p.m. **Final Questions and Discussion**
- 5:15 p.m. **Program Evaluation and Adjournment**

The NYU Sports Medicine Imaging Overview & General Information

Friday–Sunday, May 21–23, 2004
Hospital for Joint Diseases
Orthopaedic Institute
301 E. 17th Street
New York, New York

Course Director

Mark E. Schweitzer, M.D., B.S.

Professor of Radiology
Chief, Musculoskeletal Imaging
Chief of Radiology
Hospital for Joint Diseases
Orthopaedic Institute

NYU Faculty

Susan Campeas, M.D.

Assistant Professor of Radiology

Cornelia N. Golimbu, M.D.

Clinical Professor of Radiology

Laith M. Jazrawi, M.D.

Associate Professor of Orthopaedic Surgery

Michael B. Mechlin, M.D.

Assistant Professor of Radiology

Robert J. Meislin, M.D.

Assistant Professor (Clinical)
of Orthopaedic Surgery

Sandra L. Moore, M.D.

Assistant Professor of Radiology

George C. Nomikos, M.D.

Assistant Professor of Radiology

Mahvash Rafii, M.D.

Professor of Radiology

Andrew S. Rokito, M.D.

Assistant Professor of Orthopaedic Surgery
Associate Director,
Department of Orthopaedic Surgery

Zehava Sadka Rosenberg, M.D.

Professor of Radiology

Mark E. Schweitzer, M.D., B.S.

Professor of Radiology
Chief, Musculoskeletal Imaging
Chief of Radiology
Hospital for Joint Disease

Orrin H. Sherman, M.D.

Assistant Professor of Orthopaedic Surgery

Overview

Sports Medicine is of significant interest to many practices. Most imaging courses tend to focus on specific anatomic locations and may not leave adequate time to fully cover in detail, each area required by sophisticated referring physicians. This course will consist of an organized overview of basic concepts in sports imaging such as:

- What is instability and how may it appear on images
- The current status of cartilage imaging including post-operative imaging
- Muscle injuries

It will feature specific articulation-oriented presentations, covering each in detail with clinical correlations and demonstrations of arthroscopy and biomechanical concepts. Case discussions and audience participation sessions are part of this 3-day course.

Target Audience

Radiologists, orthopedic surgeons and allied health professionals.

Educational Objectives

This course is designed to help the attendee to:

- understand the role of contrast in evaluations for internal derangements
- discuss biomechanical principles
- observe the imaging findings of various types of internal derangements

Accreditation

The NYU Post-Graduate Medical School is accredited by the Accreditation Council for Continuing Medical Education (ACCME) to sponsor continuing medical education for physicians.

The NYU Post-Graduate Medical School designates that these continuing medical education activities meet the criteria for credit hours in Category I of the Physician's Recognition Award of the American Medical Association.

7.5 Hours Friday Only

7 Hours Saturday Only

5.75 Hours Sunday Only

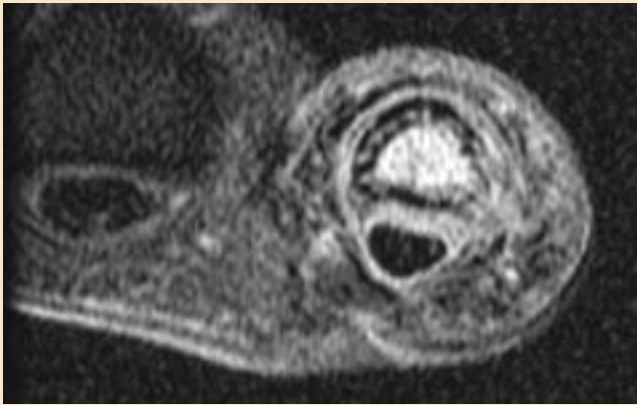
20.25 Hours in Category I Total

Disclosure Statement

The NYU Post-Graduate Medical School adheres to ACCME Standards and regarding commercial support of continuing medical education. Disclosure of any commercial relationships as well as off-label or investigational use of any drug, device or procedure by the faculty, will be made known at the course.



Course Program



FRIDAY, MAY 21, 2004

- 7:15 a.m. **Registration and Continental Breakfast**
HJD Auditorium Lobby
- 8:10 a.m. **MR TECHNIQUES**
Mark E. Schweitzer, M.D., B.S.
- 9:00 a.m. **CARTILAGE**
Sandra L. Moore, M.D.
- 10:00 a.m. **REAL-TIME ARTHROSCOPIC CORRELATION OF THE KNEE**
Orrin H. Sherman, M.D.
- 10:45 a.m. **Coffee Break**
- 11:00 a.m. **SPORT BONE INJURIES**
Sandra L. Moore, M.D.
- Noon **Lunch**
- 1:00 p.m. **MUSCLE INJURIES**
Michael B. Mechlin, M.D.
- 1:50 p.m. **INDIRECT VS DIRECT ARTHROGRAPHY VS HIGH-RESOLUTION**
Mark E. Schweitzer, M.D.
- 2:40 p.m. **Coffee Break**
- 2:55 p.m. **HIP AND PELVIS**
George C. Nomikos M.D.
- 3:55 p.m. **REAL-TIME ARTHROSCOPIC CORRELATION OF THE HIP**
Robert J. Meislin, M.D.
- 4:40–5:00 p.m. **Questions and Discussion**

SATURDAY, MAY 22, 2004

- 8:00 a.m. **Continental Breakfast**
HJD Auditorium Lobby
- 8:30 a.m. **KNEE MENISCI**
George C. Nomikos, M.D.
- 9:30 a.m. **KNEE LIGAMENTS**
Sandra L. Moore, M.D.
- 10:30 a.m. **Coffee Break**
- 10:45 a.m. **ANTERIOR KNEE**
Sandra L. Moore, M.D.
- 11:45 a.m. **SHOULDER ROTATOR CUFF**
Mahvash Rafii, M.D.
- 12:30 p.m. **Lunch**
- 1:30 p.m. **SHOULDER INSTABILITY**
Mahvash Rafii, M.D.

- 2:15 p.m. **REAL-TIME ARTHROSCOPIC CORRELATION OF THE SHOULDER**
Andrew S. Rokito, M.D.
- 3:00 p.m. **Coffee Break**
- 3:15 p.m. **ANATOMY AND KINEMATICS**
Laith M. Jazrawi, M.D.
- 4:00 p.m. **MRI OF THE ELBOW**
Zehava Sadka Rosenberg, M.D.
- 5:00 p.m. **Questions and Discussion**

SUNDAY, MAY 23, 2004

- 8:00 a.m. **Continental Breakfast**
HJD Auditorium Lobby
- 8:30 a.m. **WRIST: INTERNAL DERANGEMENTS**
Cornelia N. Golimbu, M.D.
- 9:15 a.m. **WRIST MARROW**
Mark E. Schweitzer, M.D.
- 10:00 a.m. **WRIST TENDONS**
Cornelia N. Golimbu, M.D.
- 10:30 a.m. **Coffee Break**
- 10:45 a.m. **HAND**
Mark E. Schweitzer, M.D., B.S.
- 11:25 a.m. **ANKLE AND FOOT LIGAMENTS**
Zehava Sadka Rosenberg, M.D.
- 12:15 p.m. **ANKLE TENDONS**
Mark E. Schweitzer, M.D., B.S.
- 1:00 p.m. **Lunch**
- 2:00 p.m. **ANKLE MARROW**
Mark E. Schweitzer, M.D., B.S.
- 2:40 p.m. **FOOT**
Mark E. Schweitzer, M.D.
- 3:20 p.m. **Final Questions and Answers**
- 3:40 p.m. **Program Evaluation and Adjournment**



Both Conferences General Information

Meeting Locations: Hospital for Joint Diseases Orthopaedic Institute

These two conferences will take place in the auditorium of HJD (lobby-level). The Hospital for Joint Diseases Orthopaedic Institute is located at 301 E. 17th Street (and 2nd Avenue) in the Gramercy Park neighborhood of Manhattan. You should have a photo ID to enter the hospital.

About HJD

<http://www.hjd.org>

The Hospital for Joint Diseases Orthopaedic Institute is a voluntary, not-for-profit 216-bed hospital which is world-renowned for the prevention and treatment of neuromusculoskeletal diseases. HJD is ranked as one of the nation's best hospitals for orthopaedics and rheumatology in *U.S. News and World Report's* annual "America's Best Hospitals" issue. Areas of expertise include orthopaedic surgery, rheumatology and molecular medicine, neurology, and rehabilitation medicine. HJD is a teaching hospital of the New York University School of Medicine.



How to Reach HJD

By Bus

M15 running north on 1st Avenue or M15 running south on 2nd Avenue

By Subway

Any train line stopping at Union Square (14th and Lex). Transfer to the L Line to the 3rd Avenue stop. Walk east on 14th and 2nd Avenue, turn left and proceed to 17th.

By Car

Please go to the HJD website at <http://www.hjd.org> for complete directions or call the General Information number at 212-598-6000.

Parking

- East Side Garage (200 E. 15th Street between 2nd–3rd)
- Gramercy Garage (329 E. 21st between 1st–2nd)
- Champion (211 E. 18th between 2nd–3rd)

Hotel Accommodations

A block of rooms has been reserved at the Affinia Dumont (150 E. 34th Street) for each meeting; this is a 15-minute walk to HJD or you may take the M15 bus listed above. The Affinia Dumont is an all-suite hotel which has been renovated beautifully in the last year. It now features a health club and restaurant. Full kitchens are provided in each unit. Special rates are \$169 for studio suites and \$209 for one-bedroom suites (plus taxes). Please call the Affinia Dumont at 1-800-637-8483 and indicate that you are part of the "NYU Musculoskeletal Group". Be careful to provide accurate meeting dates as we have both room blocks under the same name. A listing of other hotels offering NYU discounts can be found at www.radcme.med.nyu.edu.

If you prefer even closer accommodations, you may want to look into the Gramercy Park Hotel at 212-475-4320. We have not established a room block there.

Registration Fees

Controversies in Musculoskeletal Imaging April 24–25, 2004 (2-day course)

- \$595 (full fee)
- \$295 (reduced fee available for residents, fellows, allied health professionals, NYU alumni, M.D.'s employed by the VA, active military personnel and retired physicians, Canadian and overseas physicians)

NYU Sports Medicine Imaging Course May 21–23, 2004 (3-day course)

- \$725 (full fee)
- \$395 (reduced fee available for residents, fellows, allied health professionals, NYU alumni, M.D.'s employed by the VA, active military personnel and retired physicians, Canadian and overseas physicians)

Please register on-line by going to www.radcme.med.nyu.edu and click on Conferences. Please have your credit card handy. Alternatively, you may fax or mail your registration form and check or credit card information. You must provide an email address to receive a confirmation.

Registration confirmations are sent out weekly via email. If you receive two confirmation notices, please do not worry.

Cancellation Terms

An administrative charge of \$75 will be assessed for cancellations made in writing 30 days or more before the start of either course. Refunds are possible after this date subject to a \$150 service fee. Daily attendees will be charged \$50 for cancellations made at least one month in advance.

In Case of Questions

Contact Carmen Escobar at 212-263-3936 or email Carmen.Escobar@med.nyu.edu



Both Conferences Registration Form

NYU Department of Radiology

- **Controversies in Musculoskeletal Imaging** • April 24–25, 2004
- **The NYU Sports Medicine Imaging Course** • May 21–23, 2004

On-line
Registration
is the Fastest
Method! Go to
[www.radcme.
med.nyu.edu](http://www.radcme.med.nyu.edu)

Online Registration is fast and easy.
Go to www.radcme.med.nyu.edu
or Fax to **212-263-3959**

If you need to pay by check, see below for mailing address. Otherwise, we think you will find our on-line system to be quick and easy. You should receive an automatic confirmation/receipt via e-mail if you provide your e-mail address when registering.

How did you hear about this course?

- Journal Ad Brochure Mailing
 Web Site Word of Mouth
 Other (please specify) _____

Participant Information

PLEASE PRINT CLEARLY

Name _____
Address _____
City _____
State _____ Zip _____
Daytime Phone _____
Fax _____
E-mail _____
Now required for e-mail confirmations.
Degree _____
Specialty _____
Subspecialty _____

In Case of Questions

Call 212-263-3936 or E-mail carmen.escobar@med.nyu.edu

Confirmation of Course Acceptance:

A confirmation will be sent to you by e-mail if you provide your e-mail address clearly.

We no longer send out written or faxed confirmations.

Refund Policy:

An administrative charge of \$75 will be assessed for cancellations made in writing one month or more prior to the start of a course. Refunds will be possible after this date subject to a \$150 fee. Daily attendees will be charged \$50 for cancellations made one month or more in advance.

Course Cancellation Policy:

In the unusual circumstance that this course is cancelled, two weeks' notice will be provided and full tuition refunded. The NYU Post-Graduate Medical School is not responsible for any airfare, hotel or other costs incurred.

Name/Date of Courses

Controversies in Musculoskeletal Imaging

2-day Course • April 24–25, 2004

FULL FEES (PHYSICIANS)

- \$595 per attendee (both days)
 \$325 Saturday only
 \$325 Sunday only

DISCOUNTED FEES* (SEE BELOW FOR QUALIFICATIONS)

- \$295 discounted fee (both days)
 \$175 discounted fee Saturday only
 \$175 discounted fee Sunday only

The NYU Sports Medicine Imaging Course

3-day Course • May 21–23, 2004

FULL FEES (PHYSICIANS)

- \$725 per attendee (all 3 days)
 \$300 Friday only
 \$300 Saturday only
 \$300 Sunday only

DISCOUNTED FEES* (SEE BELOW FOR QUALIFICATIONS)

- \$395 discounted fee (all 3 days)
 \$150 discounted fee Friday only
 \$150 discounted fee Saturday only
 \$150 discounted fee Sunday only

* Discounts apply to NYU School of Medicine alumni, former and current residents & fellows, technologists, physicists, and M.D.s employed by the Dept. of Veterans Affairs, full-time active military personnel, and Canadian physicians.

Methods of Payment

- Check in U.S. Dollars** made payable to "NYU Department of Radiology"
 Credit Card

Card Member's Name (print carefully) _____

Card # _____

Amount to be Charged: \$ _____

Bill to: Visa Mastercard American Express

Exp Date: Month/Year _____ / _____

Signature (required to process) _____

- International Postal Money Order** (for overseas participants not wishing to submit credit card information)

Where to Mail or Fax

Carmen Escobar
NYU Medical Center



NEW YORK UNIVERSITY

Department of Radiology NYU CME Calendar

We hope you'll plan on joining us at one of these CME courses.

Keep our web-site bookmarked for regular updates: www.radcme.med.nyu.edu

2004

January 12-16	BODY IMAGING ESSENTIALS	Four Seasons Resort, Nevis
February 9-12	NEURORADIOLOGY AND HEAD & NECK IMAGING IN THE VIRGIN ISLANDS	Ritz Carlton, St. Thomas
February 13	INTERPRETING HEAD & NECK SCANS: TAKING YOUR REPORTS TO THE NEXT LEVEL	Caneel Bay, St. John's
March 6-7	MR SPECTROSCOPIC AND PERFUSION MRI SYMPOSIUM: THE BASICS AND BEYOND	New York City
March 15-19	ADVANCED IMAGING TECHNIQUES	Snowmass, Colorado
March 26-27	VIRTUAL COLONOSCOPY WORKSHOP (Very Limited)	New York City
April 24-25	CONTROVERSIES IN MUSCULOSKELETAL IMAGING	New York City
May 21-23	THE NYU SPRING SPORTS MEDICINE IMAGING COURSE	New York City
June 4-5	VIRTUAL COLONOSCOPY WORKSHOP (Very Limited)	New York City
June 28-July 2	SUMMER RADIOLOGY PRACTICUM	Prout's Neck, Maine
July 25-30	SUMMER BODY AND MUSCULOSKELETAL IMAGING	Banff Springs, Canadian Rockies
October 1-2	VIRTUAL COLONOSCOPY WORKSHOP (Very Limited)	New York City
November 2-4	MRI: CLINICAL STATE OF THE ART	New York City
November 5-6	1ST NYU CARDIAC IMAGING SYMPOSIUM (CT/MRI)	New York City
December 13-18	23RD ANNUAL CT/MRI: HEAD TO TOE	New York City

2005

January 11-14	NEURORADIOLOGY ON NEVIS	Four Seasons Resort, Nevis
January 29-Feb 5	BODY IMAGING ESSENTIALS	Costa Rica
March 14-18	ADVANCED IMAGING TECHNIQUES	Snowmass, Colorado
June 27-July 1	SUMMER RADIOLOGY PRACTICUM ON THE MAINE COAST	Prout's Neck, Maine
August 1-5 (tentative)	SUMMER SYMPOSIUM IN ITALY (NEURO AND MUSCULOSKELETAL)	Laggo di Maggiore (Lakes Region north of Milan)

(more to be announced for 2005)

SCHOOL OF
MEDICINE



NEW YORK UNIVERSITY

New York University
School of Medicine
Department of Radiology
560 1st Avenue, TCH-HW-231
New York, NY 10016

Non-Profit Organization
U.S. Postage
Paid
New York University



Controversies in Musculoskeletal Imaging:

A CME Course Unlike the Others

APRIL 24-25, 2004

The NYU Sports Medicine Imaging Course

MAY 21-23, 2004

MEETING LOCATION:
HOSPITAL FOR JOINT DISEASE
NEW YORK CITY