

The Department of Radiology Presents:

10th Annual

NYU Radiology Alpine Imaging Symposium *in Deer Valley*

Sponsored By NYU Post-Graduate Medical School

March 12–16, 2012

The Chateaux at Silver Lake, Deer Valley, UT

General Information

Target Audience

This course is designed for practicing clinical radiologists in academics or private practice. Non-radiologist clinicians who treat gastrointestinal, pulmonary or breast diseases may also benefit from being updated on the latest imaging developments.

Statement of Need / Course Description

Radiologists must be aware of the changes and developments in all areas of radiology (MR, CT, US, X-ray) including Abdominal, Thoracic, Cardiac, Breast Imaging and PET/CT in order to maintain certification and maximize patient care. It is imperative that radiologists stay up-to-date on the latest imaging protocols and be aware of technological advances and how to incorporate them into their everyday practice.

Several important topics to be covered include: radiation dose in CT, screening mammography, PET/CT in breast cancer, MR angiography and fibrotic lung disease. The essentials presented in this program are meant to be integrated into the participants' practices in an effort to improve their current knowledge, imaging skills and ultimately improve patient care.

Learning Objectives

- Discuss the technological advances in cardiovascular imaging and develop strategies to incorporate into everyday practice.
- Determine how best to measure, calculate and communicate radiation dose as it relates to CT scanning in abdominal imaging.
- Analyze how the anatomical appearance of ground glass and part-solid lung nodules correlates with low level activity on PET scans, while maximizing the ratio between image quality and radiation dose.

Registration Information

You may register for this meeting online or by completing the registration form on page 5.

Accreditation Statement

The NYU Post-Graduate Medical School is accredited by the Accreditation Council for Continuing Medical Education to provide continuing medical education for physicians.

Credit Designation Statement

The NYU Post-Graduate Medical School designates this live activity for a maximum of 22.5 *AMA PRA Category 1 Credits™*. Physicians should only claim credit commensurate with the extent of their participation in the activity.

Disclosure Statement

The NYU Post-Graduate Medical School adheres to ACCME Essential Areas and Policies, including the Standards for Commercial Support regarding industry support of continuing medical education. In order to resolve any identified conflicts of interest, disclosure information is provided during the planning process to ensure resolution of any identified conflicts. Disclosure of faculty and commercial relationships as well as the discussion of unlabeled or unapproved use of any drug, device or procedure by the faculty will be fully noted at the meeting.

Special Needs

The Post-Graduate Medical School of the New York University School of Medicine, in compliance with the legal requirements of the Americans with Disabilities Act, requests that any participant of this CME course who is in need of accommodation, submit written requests to our office at least one month prior to the course start date.

Schedule

10th Annual NYU Radiology Alpine Imaging Symposium • March 12–16, 2012

Sunday, March 11th

8:30–10:00am & 5:30–6:30pm

Registration & Lift Ticket Distribution

Monday, March 12th

Morning Session

- 6:45am Registration & Breakfast
- 7:10am Welcome
M. Barbara Srichai-Parsia, M.D.
- 7:15am Understanding Radiation Dose in CT
Alec J. Megibow, M.D., M.P.H., F.A.C.R.
- 8:00am Cardiac CT Protocols:
Balancing Image Quality with Radiation Dose
M. Barbara Srichai-Parsia, M.D.
- 8:45am Enterography CT and MR 2012
Alec J. Megibow, M.D., M.P.H., F.A.C.R.
- 9:30am Questions & Discussion
- 9:45am Adjourn

Afternoon Session

- 4:00pm Refreshments & Cases of the Day —
BREAST IMAGING
- 4:15pm Screening Mammography: The Controversy
Hildegard K. Toth, M.D.
- 5:00pm PET/CT Breast Cancer
Kent P. Friedman, M.D.
- 5:45pm Case Review — Breast Imaging
Hildegard K. Toth, M.D.
- 6:15pm Questions & Discussion
- 6:30pm Adjourn

Tuesday, March 13th

Morning Session

- 6:45am Breakfast
- 7:15am Lung Cancer Screening: NLST Update,
Screening Programs and Nodule Management
Georgeann McGuinness, M.D., F.A.C.R.
- 8:00am PET/CT Lung Cancer
Kent P. Friedman, M.D.
- 8:45am Magnetic Resonance Angiography
in Cardiovascular Applications
M. Barbara Srichai-Parsia, M.D.
- 9:30am Questions & Discussion
- 9:45am Adjourn

Afternoon Session

- 4:00pm Refreshments and Cases of the Day —
CARDIAC IMAGING
- 4:15pm Cardiac CT in the Evaluation of Acute Chest Pain
M. Barbara Srichai-Parsia, M.D.
- 5:00pm MDCT Urography — optimal technique and results
Alec J. Megibow, M.D., M.P.H., F.A.C.R.
- 5:45pm Case Review — Cardiac Imaging
M. Barbara Srichai-Parsia, M.D.
- 6:15pm Questions & Discussion
- 6:30pm Adjourn

Wednesday, March 14th

Morning Session

- 6:45am Breakfast
- 7:15am PET/CT Gynecological Malignancies
Kent P. Friedman, M.D.
- 8:00am Breast MRI: When and Why?
Hildegard K. Toth, M.D.
- 8:45am PET/CT Pearls and Pitfalls
Kent P. Friedman, M.D.
- 9:30am Questions & Discussion
- 9:45am Adjourn

Afternoon Session

- 4:00pm Refreshments and Cases of the Day —
ABDOMINAL IMAGING
- 4:15pm Pancreatic Neoplasms, CT and MRI
Alec J. Megibow, M.D., M.P.H., F.A.C.R.
- 5:00pm Multimodality Cardiovascular Imaging:
Where are we now?
M. Barbara Srichai-Parsia, M.D.
- 5:45pm Case Review — ABDOMINAL IMAGING
Alec J. Megibow, M.D., M.P.H., F.A.C.R.
- 6:15pm Questions & Discussion
- 6:30pm Adjourn

Thursday, March 15th

Morning Session

- 6:45am Breakfast
- 7:15am Breast MR: Probably Benign Lesion
Hildegard K. Toth, M.D.
- 8:00am Reticular and Fibrotic Lung Disease:
The Line between UIP & NSIP
Georgeann McGuinness, M.D., F.A.C.R.
- 8:45am Image-Guided Procedures:
Review & Practical Aspects
Hildegard K. Toth, M.D.
- 9:30am Questions & Discussion
- 9:45am Adjourn

Afternoon Session

- 4:00pm Refreshments and Cases of the Day —
THORACIC IMAGING
- 4:15pm Imaging Airway Disease
Georgeann McGuinness, M.D., F.A.C.R.
- 5:00pm Dual Energy CT 2012
Alec J. Megibow, M.D., M.P.H., F.A.C.R.
- 5:45pm Case Review — Thoracic Imaging
Georgeann McGuinness, M.D., F.A.C.R.
- 6:15pm Questions & Discussion
- 6:30pm Adjourn

Friday, March 16th

Morning Session

- 6:45am Breakfast
- 7:15am Non-Fibrosing ILDs
Georgeann McGuinness, M.D., F.A.C.R.
- 8:00am Pearls and Pitfalls in Cardiac MR and CT
M. Barbara Srichai-Parsia, M.D.
- 8:45am Imaging the Post Operative Aorta
Georgeann McGuinness, M.D., F.A.C.R.
- 9:30am Final Questions & Discussion
- 9:45am Adjournment

NYU Course Director

M. Barbara Srichai-Parsia, M.D.
Assistant Professor of Radiology
and Medicine

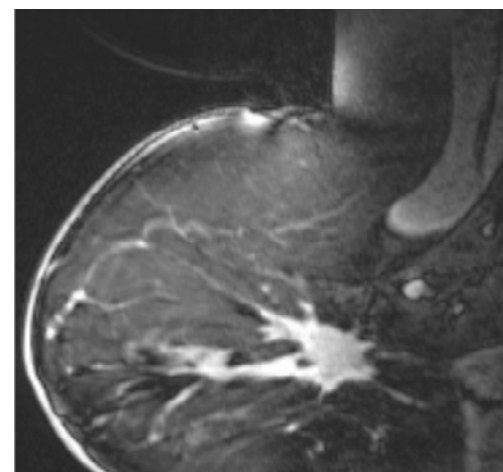
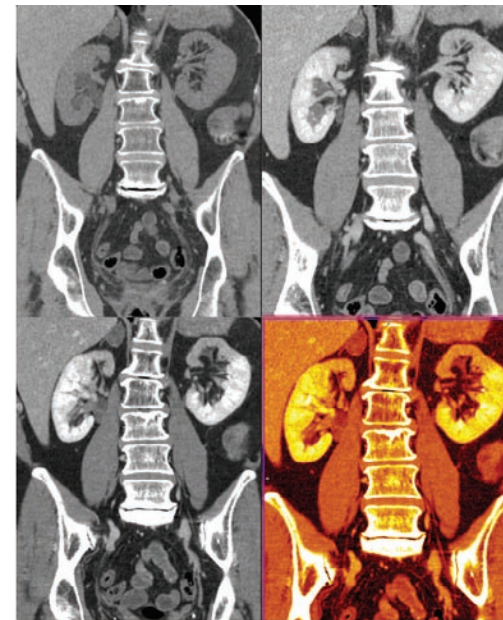
NYU Faculty

Kent P. Friedman, M.D.
Assistant Professor of Radiology
Chief, Nuclear Medicine

Georgeann McGuinness, M.D., F.A.C.R.
Professor and Sr. Vice Chair of Radiology
Vice Chair of Education and
Academic Affairs

Alec J. Megibow, M.D., M.P.H., F.A.C.R.
Professor of Radiology
Director, Faculty Practice Radiology

Hildegard K. Toth, M.D.
Associate Professor of Radiology
Chief, Breast Imaging



10th Annual NYU Radiology Alpine Imaging Symposium

March 12–16, 2012

Hotel Information

The Chateaux at Silver Lake, Deer Valley

Now managed by the world-famous Stein Eriksen, this elegant Deer Valley hotel is located in the heart of Deer Valley Resort's mid-mountain Silver Lake Village. The Chateaux offers quality amenities, as well as a variety of finely appointed and spacious room types including hotel rooms, studios, and multi-bedroom suites. **Simply walk out the door of The Chateaux and you are just a few steps away from the beautiful slopes of Deer Valley Resort**, with three mid-mountain chair lifts and all the resort services at Silver Lake Lodge. **Leave your skis at the complimentary mountain ski valet. Or take a short complimentary shuttle ride to Park City's Historic Main Street for more skiing and endless dining and shopping - just a few minutes from the hotel!**

About Deer Valley

Deer Valley Resort offers all of the elements of a true vacation: a beautiful landscape of blue skies, mountain peaks and conifers covered with snow; unparalleled access; luxurious accommodations and amenities; gourmet cuisine; personal assistance through every step of the planning process, and world-class service once you arrive. It's no accident that Deer Valley has been **named the #1 ski resort in North America by the readers of SKI Magazine for an impressive 5th year in a row!**

Deer Valley is located in the charming and historic town of Park City, just 36 miles from the Salt Lake City International Airport via Interstate Highway. With hundreds of daily flights in and out of Salt Lake City International Airport, skiers can arrive at the airport by late morning, and **be on the slopes at Deer Valley by early afternoon.** Add in 300 annual inches of famous Utah dry powder, 100 trails, six bowls, 21 chairlifts and a limited number of skiers allowed on the mountain each day; three elegant day lodges glowing warm with firelight and award winning cuisine; a renowned Ski School and Children's Center; and unsurpassed services and amenities such as parking lot shuttles, complimentary ski storage, ski valets and more.



NYU Hotel Room Block

The Chateaux has agreed to the most discounted rates in this area for NYU attendees, but you must book early! Hotel reservations must be made by **January 25, 2012.**

Hotel Room: \$319

Each room features one king or two queen beds, private bath, feather beds, cable television, small refrigerator, toaster, coffee maker and gas fireplace.

One-Bedroom Suite: \$659

Each suite offers the combined features of a hotel room and a studio unit and features a fully equipped kitchen, living room and gas fireplace.

Studios with queen murphy beds and a kitchen are also available upon request at \$319/night.

Two bedroom and three bedroom suites are available upon request.

A Resort lodging fee of 5%, taxed at 10.45%, is also applicable.

The resort fee covers the following items:

- Wireless internet access in guest rooms
- Bellmen portage fees
- Daily maid gratuities
- Shuttle to and from the town of Park City
- Local calls
- Access to fitness center, pool and hot tub
- Parking

To make a reservation, please call The Chateaux directly at 1-877-288-2978. Attendees should mention they are booking rooms with the **NYU Langone Medical Center Group.**





Traveling to Deer Valley

Getting to Deer Valley is a breeze! Fly into Salt Lake City Airport (SLC) (approx 45 minutes from The Chateaux).

You may rent a car or schedule a shuttle. A car is not necessary as the **hotel is in the heart of Deer Valley and minutes from Park City (the hotel offers complimentary shuttle rides to and from Park City).**

Airport Shuttle

NYU has secured discounted rates with **Park City Transportation** from the airport to the hotel. Approximately \$35 per person for a shared shuttle. Please call **(800) 637-3803** or go to the NYU website to make your reservation.



Discounted Deer Valley Lift Tickets (by Credit Card or Check)

The NYU Group will receive a substantial discount off public rates — over 20%! Please refer to the Ski Lift Ticket Order form on our website. Totally unused lift tickets are refundable minus a \$25 service fee until March 12, 2012, but once any portion is used, the remaining days cannot be refunded.

Please note that Snowboarding is not offered at Deer Valley Resort but is permissible at Park City Mountain Resort. We are also selling lift Tickets for the Park City Resort if you wish to explore that mountain one day.

Please visit NYU's website to download the ski lift ticket order form.

Deer Valley Lift Tickets

NUMBER OF DAYS	ADULT	CHILDREN (12 & UNDER)
1 day	\$77	\$60
2 of 7 days	\$139	\$112
3 of 7 days	\$204	\$159
4 of 7 days	\$279	\$208
5 of 7 days	\$345	\$250
6 of 7 days	\$407	\$288
7 of 7 days	\$602	\$336

Additional Special Rates

Please inquire about senior rates if you are age 65 or over, as well as "Wide West only" pass for beginners (gives access to beginner area at the base of the mountain only).

Deer Valley Ski School

Whether you're a child or an adult, a top-level skier or an eager beginner, Deer Valley Resort Skier Services offers a great selection of specialty ski programs designed to improve skiers' skills, confidence, knowledge and overall enjoyment of the sport.

If you are interested in ski school, it is very important to book lessons in advance, as the ski school reaches capacity quickly!

The Skier Services Reservation office is available Mon – Fri from 8 a.m. to 5 p.m. MST at **888-754-8477 or 435-645-6648.**

For more information or for reservation request forms, please visit www.deervalley.com.

10th Annual NYU Radiology Alpine Imaging Symposium

March 12–16, 2012

Online Registration is Fast & Easy!
Go to: www.radcme.med.nyu.edu

Registration Form

Please Print Clearly

Name

Address

City

State

Zip

Day Phone

Fax

E-mail (required for course confirmation)

Degree

Specialty

Subspecialty

Dietary Restrictions

(Please indicate any dietary restrictions on the registration form when you register.)

Registration Fee Options

(Please check appropriate boxes below)

10th Annual NYU Radiology Alpine Imaging Symposium
March 12–16, 2012

\$925 Registration fee for physician

\$725 Discounted fee*

* Discounted Fees apply to NYU School of Medicine alumni, M.D.s employed by the Dept. of Veterans Affairs, full-time active military personnel, technologists, current residents/fellows, retirees, Canadian and other non-US physicians.

Optional Printed Syllabus

NYU is excited to announce that we are Going Green beginning in January 2012! All meeting attendees will receive a USB drive uploaded with the meeting lectures. If you wish to purchase an additional printed syllabus, there is a fee of \$30 and you may order this when you register for the meeting.

\$30 Optional Printed Syllabus

Methods of Payment

- Check in U.S. Dollars made payable to **NYU Department of Radiology**
 Credit Card Payment (see below)

Payment by Credit Card

Bill to: Visa Mastercard American Express

Card Member's Name (*print carefully*)

Card #

Exp Date: Month/Year _____ / _____

Amount to be Charged: \$ _____

Signature (*required to process*)

Fax Form to: (212) 263-3959

If Sending Check, Please Mail to:

Marisa Costello
Department of Radiology
462 First Avenue
OBH, C&D, Floor 1, Room 4
New York, NY 10016

Refund Policy:

If you need to cancel your enrollment, a \$75 service fee will be assessed for your tuition payment if written notice is received at least 30 days in advance and a \$150 service fee for cancellations made within 30 days. No refunds are possible if written notification is not sent.

Course Cancellation Policy:

In the unusual circumstance that this course is cancelled, two weeks' notice will be provided and full tuition refunded. The NYU Post-Graduate Medical School is not responsible for any airfare, hotel or other costs incurred.

Educational Needs:

If there is a specific question or topic relating to this course, please submit it on the registration form or on the website when registering online.

In Case of Questions, Contact:

Michelle R. Koplik, Director of CME at (212) 263-3936
or michelle.koplik@nyumc.org

Marisa Costello, Program Coordinator at (212) 263-0724
or Marisa.bruno@nyumc.org

We hope you'll plan on joining us at one of these CME courses.
WWW.RADCME.MED.NYU.EDU

2011

DEC. 12-17 **30th Annual Head To Toe Imaging** The Hilton New York
New York, NY

2012

JAN. 23-27 **NYU Clinical Imaging Symposium** Fairmont Kea Lani
Maui, HI

MAR 12-16 **10th Annual NYU Radiology Alpine
Imaging Symposium** The Chateaux
Deer Valley, UT

MAY 21-24 **Sports Medicine Imaging State of the Art:
A Collaborative Course for Radiologists
and Sports Medicine Specialists** NYU Medical Center
New York, NY

JUNE 27-30 **Clinical Imaging Update** The Sagamore Resort
Lake George, NY

JULY 30-AUG. 3 **Summer Radiology Symposium
in Whistler** Four Seasons
Whistler, Canada

OCT 22-26 **Fall Radiology Symposium** The Roosevelt Hotel
New Orleans, LA

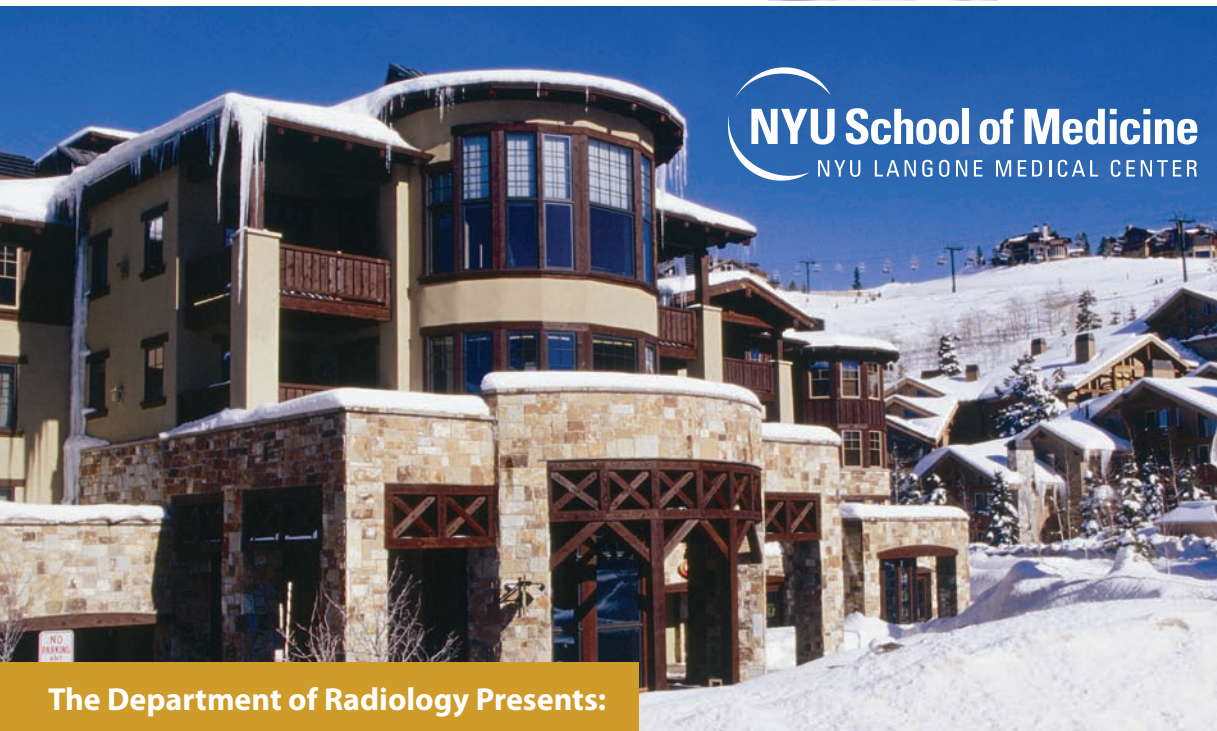


Department of Radiology
462 First Avenue
OBH, C&D, Floor 1, Room 4
New York, NY 10016

Non-Profit Organization
U.S. Postage
PERMIT #8167
New York University

10th Annual NYU Radiology Alpine Imaging Symposium

March 12-16, 2012



The Department of Radiology Presents:

10th Annual

NYU Radiology Alpine Imaging Symposium *in Deer Valley*

March 12-16, 2012

The Chateaux at Silver Lake, Deer Valley, UT

