

Sponsored by the  
NYU Post-Graduate  
Medical School

## Summer Radiology Symposium

*at The Sagamore  
on Lake George*

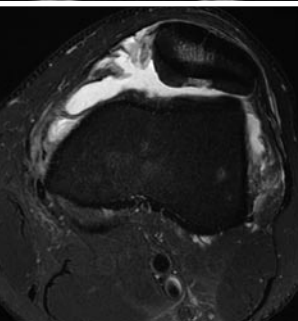
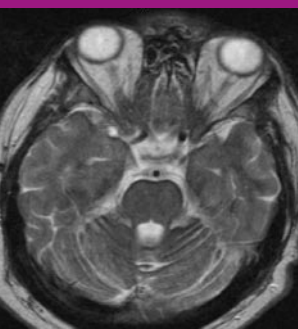
June 27–June 30, 2012  
Bolton Landing, New York

 **NYU School of Medicine**  
NYU LANGONE MEDICAL CENTER  
Department of Radiology

## Clinical Imaging Symposium

*at the Four Seasons,  
Whistler, Canada*

July 30–August 3, 2012  
Whistler, British Columbia



### **NYU Course Director**

**Barry S. Leitman, M.D., F.A.C.R.**  
Professor of Radiology  
Chief, Thoracic Imaging

### **NYU Faculty**

**Morton A. Bosniak, M.D.**  
Professor Emeritus of Radiology

**Hersh Chandarana, M.D.**  
Assistant Professor of Radiology

**Jiyon Lee, M.D.**  
Assistant Professor of Radiology

**Yvonne W. Lui, M.D.**  
Assistant Professor of Radiology  
Chief, Neuroradiology

**Michael Macari, M.D.**  
Professor of Radiology  
Chief, Abdominal Imaging  
Vice Chair of Operations

### **Target Audience**

This course is designed for clinical radiologists in academic or private practice.

### **Statement of Need/Course Description**

This course is designed to demonstrate how to accurately identify imaging findings that narrow the differential diagnosis for chest, abdomen, brain and breast imaging for optimal patient care. Maintenance of certification requires continued review of essential imaging techniques in all areas of radiology.

While addressing up-to-date imaging protocols, this course will cover topics including: controversies of radiation from CT, diffuse lung disease, managing breast BIRADS, brain diffusion, as well as US, MR & CT of focal liver. The course will also help radiologists and clinicians to optimize imaging management in terms of appropriate selection of imaging parameters, sequences, and in fact exam selection, tailored to specific diagnoses or clinical conditions.

### **Learning Objectives**

- Evaluate Current pulmonary CTA protocols which must be optimized for imaging pregnant patients to improve image quality while limiting radiation doses.
- Discuss the imaging findings from the American Pancreatic Association that need to be communicated to the referring clinician when pancreatic cancer is present on imaging studies.

- Discuss and evaluate the current mammography protocols with the goal of formulating imaging protocols that increase their efficacy and hopefully mitigate adverse effects, as well as discuss other screening modalities and their indications.
- Based on advances in MRI, discuss emerging concepts in pathophysiology and clinical management of a broad range of CNS disorders and how best to factor them into their radiological interpretations.

### **Accreditation Statement**

The NYU Post-Graduate Medical School is accredited by the Accreditation Council for Continuing Medical Education to provide continuing medical education for physicians.

### **Credit Designation Statement**

The NYU Post-Graduate Medical School designates this live activity for a maximum of 19.5 *AMA PRA Category 1 Credit(s)*™. Physicians should claim only the credit commensurate with the extent of their participation in the activity.

### **Disclosure Statement**

The NYU Post-Graduate Medical School adheres to ACCME Essential Areas and Policies, including the Standards for Commercial Support regarding industry support of continuing medical education. In order to resolve any identified conflicts of interest, disclosure information is provided during the planning process to ensure resolution of any identified conflicts. Disclosure of faculty and commercial relationships as well as the discussion of unlabeled or unapproved use of any drug, device or procedure by the faculty will be fully noted at the meeting.

### **Special Needs**

The Post-Graduate Medical School of the New York University School of Medicine, in compliance with the legal requirements of the Americans with Disabilities Act, requests that any participant of this CME course who is in need of accommodation, submit written requests to our office at least one month prior to the course start date.

### **Meeting Registration**

Online registration is fast and easy. Go to [www.radcme.med.nyu.edu](http://www.radcme.med.nyu.edu) to register or download the registration form. **\$975 Full Fee; \$775 reduced fee.**

### **Questions**

Please call us at 212-263-0724 with any questions about the meeting.

## Meeting Schedule (Wednesday–Saturday)

### Wednesday, June 27th

- 8:00 am **US, CT and MRI of Focal Liver Lesions**  
Michael Macari, M.D.
- 8:45 am **Imaging in the ICU**  
Barry S. Leitman, M.D., F.A.C.R.
- 9:30 am **CT and MRI of Pancreatic Neoplasms**  
Michael Macari, M.D.
- 10:15 am **Coffee Break**
- 10:30 am **CT Assessment of Pulmonary Emboli**  
Barry S. Leitman, M.D., F.A.C.R.
- 11:15 am **Imaging of Solid Renal Lesions**  
Hersh Chandarana, M.D.
- 12:00 pm **Differentiating Benign and Malignant Cystic Lesions of the Kidney**  
Morton A. Bosniak, M.D.
- 12:30 pm **Interesting Body Cases**  
Hersh Chandarana, M.D.
- 1:00 pm **Questions**
- 1:15 pm **Adjourn**
- 6:00–7:00 pm **Welcome Reception**

### Thursday, June 28th

- 8:00 am **Diffusion Weighted Imaging in the Abdomen: Should it be Routine?**  
Hersh Chandarana, M.D.
- 8:45 am **The Abnormal Small Bowel: A Pattern Approach to Pathology**  
Michael Macari, M.D.
- 9:30 am **HRCT of the Lungs: Signs and Interpretation**  
Barry S. Leitman, M.D., F.A.C.R.
- 10:15 am **Coffee Break**
- 10:30 am **Flavors of Diffusion in the Brain**  
Yvonne W. Lui, M.D.
- 11:15 am **What is New with CT Colonography?**  
Michael Macari, M.D.
- 12:00 pm **Interesting Case Presentations in Uroradiology**  
Morton A. Bosniak, M.D.
- 12:30 pm **Interesting Neuro Cases**  
Yvonne W. Lui, M.D.
- 1:00 pm **Questions**
- 1:15 pm **Adjourn**

### Friday, June 29th

- 8:00 am **Imaging Update on Headache**  
Yvonne W. Lui, M.D.
- 8:45 am **Liver Iron and Fat: Why Should I Care?**  
Hersh Chandarana, M.D.
- 9:30 am **Screening Mammography: the Ongoing Saga**  
Jiyon Lee, M.D.
- 10:15 am **Coffee Break**
- 10:30 am **What Else Should We Know About Breast Density?**  
Jiyon Lee, M.D.
- 11:15 am **Dual Energy CT in the Abdomen and Pelvis: Update**  
Hersh Chandarana, M.D.
- 12:00 pm **Controversies Regarding Radiation and What We Can Do About It**  
Michael Macari, M.D.
- 12:30 pm **Interesting Breast Cases**  
Jiyon Lee, M.D.
- 1:00 pm **Questions**
- 1:15 pm **Adjourn**

### Saturday, June 30th

- 8:00 am **Review of the MRI Lexicon and Managing Those BIRADS 3 Lesions**  
Jiyon Lee, M.D.
- 8:45 am **Vascular Malformations of the Brain**  
Yvonne W. Lui, M.D.
- 9:30 am **Breast Cancer Genetics and Medical Oncology: A Primer for the Radiologist**  
Jiyon Lee, M.D.
- 10:15 am **Coffee Break**
- 10:30 am **Typical and Atypical Patterns of Pulmonary Atelectasis: Everything That You Thought You Recalled and More**  
Barry S. Leitman, M.D., F.A.C.R.
- 11:15 am **Neurodegenerative Disorders: An Imaging Review**  
Yvonne W. Lui, M.D.
- 12:00 pm **Interesting Chest Cases**  
Barry S. Leitman, M.D., F.A.C.R.
- 12:30 pm **Questions**
- 12:45 pm **Adjourn**

You may register for this meeting Online or by completing the registration form on our website and faxing to 212-263-3959  
<http://www.med.nyu.edu/courses/cme/sagamore12>

## Hotel Information

### The Unspoiled Adirondacks

The Sagamore, located in the heart of the Adirondacks, is an island resort on Lake George anchored in Bolton Landing, New York. Located 60 miles north of Albany via Interstate 87, The Sagamore is a leisurely drive from most Mid-Atlantic, New England, Quebec and Ontario Province metropolitan areas, and is just a four-hour drive from New York City or Boston. From outdoor adventure to peaceful solitude, you will find it here in the Adirondacks. With more than 20 beautiful lakes, countless outdoor activities and dozens of exciting attractions, the Lake George area is the perfect vacationer's paradise.

### Getting to the Sagamore Resort on Lake George

**This upstate New York destination resort is easily accessible.**

The Sagamore is located on Lake George and is accessible by air to Albany International Airport, by Amtrak from New York and Montreal, and by automobile via Interstate 87 (the Northway). The Sagamore Resort is within a short drive of most Mid-Atlantic, New England, Quebec and Ontario Province metropolitan areas.

#### Albany-Rensselaer, NY Amtrak Station

The Albany train station is 70 miles from the resort. There is an Enterprise Rental Car Agency at the station.

#### Albany Airport (ALB)

The Albany Airport is approximately one hour from the Sagamore Resort.

The Sagamore can arrange transportation to and from the airport/train station for guests.

***If you are interested, please call the hotel directly at 518-644-9400 and ask for transportation information and pricing.***

### Activities — Upstate New York's Luxury Resort and Sports Paradise

Discover endless opportunities for fun! The Sagamore's recreational offerings include splendid golf, wonderful programs just for kids, boating and fishing on the waterfront, complimentary tennis and other outdoor sports, plus indoor fitness, swimming, movies and games.

Activities for children include: pool (indoor with whirlpool and outdoor pool), lake and water sports, bonfires, arts & crafts, movies, games, playground, volleyball, basketball, tennis and much more! **Please visit the NYU website for more information about activities at The Sagamore.**

### Discounted NYU Hotel Rates

#### Hotel Rooms & Suites

A new era of modern elegance in the heart of the Adirondacks. Originally built in 1883 and lovingly restored, the Historic Hotel features clapboard siding and classic architecture. The guest rooms have updated furnishings and a choice of garden or lake views. The Historic Hotel rooms and one-bedroom suites are richly appointed in clubstyle ambiance combined with original art and decorative accessories.

**Gardenview Hotel Room \$279**

**Lakeview Hotel Room \$336**

**Gardenview Hotel Suite \$405**

**Lakeview Hotel Suite \$445**

#### Lodge Rooms & Suites

The lodge rooms and suites are the value accommodations on the property and are a short walk or shuttle ride to the hotel. Lodge rooms do not offer lake views, but have an Adirondack feel. Suites have dining alcoves, wet bar, refrigerator, microwave, gas fireplace, a 42" plasma screen, spacious bath with separate tub and walk-in shower.

**Lodge Room \$219**

**Lodge Suite \$349**

There is a \$15 resort fee (\$25 for non NYU) which includes wireless internet access in guest rooms, valet or self parking, access to indoor & outdoor pool, fitness center, complimentary local and 1-800 calls, the Morgan Sightseeing Cruise, access to the Rec Center and the SKC (Sagamore Kids Club), daily newspaper and daily complimentary activities including: Kitchen Tours, History Tours and Garden Tours.

### Hotel Reservations

The above discounted rates may **only be obtained by visiting the NYU website** and booking online. **You may also call the hotel directly at 1-800-358-3585 and mention the NYU Radiology Group. Deadline for reservations: May 25, 2012.**

### **NYU Course Director**

**Zehava Sadka Rosenberg, M.D.**  
Professor of Radiology &  
Orthopedic Surgery

### **NYU Faculty**

**John P. Loh, M.D.**  
Assistant Professor of Radiology

**Amy Melsaether, M.D.**  
Assistant Professor of Radiology

**Rafael Rivera, M.D.**  
Assistant Professor of Radiology

**Maj L. Wickstrom, M.D.**  
Assistant Professor of Radiology

### **Target Audience**

This course is designed for clinical radiologists in academic or private practice.

### **Statement of Need/Course Description**

It is essential to stay abreast of the most up-to-date MRI, CT and US imaging protocols of the nervous system, chest, pediatric, breast and musculoskeletal system in order to improve image interpretation. Furthermore, clinical radiologists must establish appropriate advanced imaging techniques which will enhance diagnostic accuracy.

A wide range of topics will be covered in this program including but not limited to: Stroke Imaging, Imaging Thromboembolic Disease, Pediatric Sonography, MR of Ankle Impingements and Breast MRI. Furthermore, the participant will learn how to utilize new strategies/pulse sequences in CT and MRI, and how to apply this understanding to enhance clinical practices. CT radiation dose reduction methods pertaining to clinical protocols for thoracic and pediatric disease will be covered. Additionally, MR neurography pitfalls and pathologic features compatible with nerve entrapment and neuritis will be discussed.

### **Learning Objectives**

- Based on advances in imaging techniques, evaluate and devise a strategy to adjust protocols in order to improve diagnostic accuracy of pulmonary thromboembolic disease and decrease radiation dose.
- Utilize advanced MRI screening techniques in order to differentiate between benign and malignant lesions, minimizing falsely positive examinations and cost while optimizing treatment.

- Describe how MRI neurography can provide specific information detailing the exact site and exact cause for nerve entrapment such as a hypertrophied muscle, bony spur or an adjacent soft tissue mass.
- Discuss the purpose and methodology of CT, CT perfusion, and CT angiography in acute stroke imaging in order to devise strategies to improve diagnostic accuracy and therapeutic outcome.

### **Accreditation Statement**

The NYU Post-Graduate Medical School is accredited by the Accreditation Council for Continuing Medical Education to provide continuing medical education for physicians.

### **Credit Designation Statement**

The NYU Post-Graduate Medical School designates this live activity for a maximum of 19 *AMA PRA Category 1 Credit(s)*™. Physicians should claim only the credit commensurate with the extent of their participation in the activity.

### **Disclosure Statement**

The NYU Post-Graduate Medical School adheres to ACCME Essential Areas and Policies, including the Standards for Commercial Support regarding industry support of continuing medical education. In order to resolve any identified conflicts of interest, disclosure information is provided during the planning process to ensure resolution of any identified conflicts. Disclosure of faculty and commercial relationships as well as the discussion of unlabeled or unapproved use of any drug, device or procedure by the faculty will be fully noted at the meeting.

### **Special Needs**

The Post-Graduate Medical School of the New York University School of Medicine, in compliance with the legal requirements of the Americans with Disabilities Act, requests that any participant of this CME course who is in need of accommodation, submit written requests to our office at least one month prior to the course start date.

### **Meeting Registration**

Online registration is fast and easy. Go to [www.radcme.med.nyu.edu](http://www.radcme.med.nyu.edu) to register or download the registration form. **\$975 Full Fee; \$775 reduced fee.**

### **Questions**

Please call us at 212-263-0724 with any questions about the meeting.

**Meeting Schedule (Monday – Friday w/Free Day on Wednesday)****Sunday, July 29th**4:00–6:00 pm **Registration****Monday, July 30th**8:00 am **MRI and US of Extensor  
Tendons of the Ankle**  
Zehava Sadka Rosenberg, M.D.8:45 am **US of Pediatric Abdominal Emergencies**  
Rafael Rivera, M.D.9:30 am **Stroke Imaging**  
John P. Loh, M.D.10:15 am **Coffee Break**10:30 am **Pediatric Musculoskeletal MRI:  
A Primer**  
Rafael Rivera, M.D.11:15 am **Demyelinating Disease**  
John P. Loh, M.D.12:00 pm **Interesting Pediatric Cases**  
Rafael Rivera, M.D.12:45 pm **Questions**1:00 pm **Adjourn**6:00–7:00 pm **Welcome Reception****Tuesday, July 31st**8:00 am **Head Trauma**  
John P. Loh, M.D.8:45 am **Imaging of Thromboembolic Disease:  
An Update**  
Maj L. Wickstrom, M.D.9:30 am **MRI of Peripheral Vascular Anomalies:  
An Algorithmic Approach**  
Rafael Rivera, M.D.10:15 am **Coffee Break**10:30 am **Brain Tumors**  
John P. Loh, M.D.11:15 am **Bread & Butter Outpatient Pediatric  
Sonography: Head, Hip, & Spine**  
Rafael Rivera, M.D.12:00 pm **Interesting Thoracic Cases**  
Maj L. Wickstrom, M.D.12:45 pm **Questions**1:00 pm **Adjourn****Thursday, August 2nd**8:00 am **BI-RADS 2012 and Breast MRI:  
New Usage and Examples**  
Amy Melsaether, M.D.8:45 am **MRI of Ankle Impingements**  
Zehava Sadka Rosenberg, M.D.9:30 am **Evaluation of Small Airway Disease**  
Maj L. Wickstrom, M.D.10:15 am **Coffee Break**10:30 am **Digital Screening Mammography:  
Who, When and How**  
Amy Melsaether, M.D.11:15 am **MR Neurography of the Pelvis and Hip**  
Zehava Sadka Rosenberg, M.D.12:00 pm **Interesting Breast Cases**  
Amy Melsaether, M.D.12:45 pm **Questions**1:00 pm **Adjourn****Friday, August 3rd**8:00 am **Breast Ultrasound:  
Feature Analysis and Interpretation**  
Amy Melsaether, M.D.8:45 am **Current Approach to Pulmonary  
Nodule Assessment and Follow-up**  
Maj L. Wickstrom, M.D.9:30 am **MR Imaging of Muscle Disorders**  
Zehava Sadka Rosenberg, M.D.10:15 am **Coffee Break**10:30 am **Imaging of Cystic Lung Disease**  
Maj L. Wickstrom, M.D.11:15 am **Breast MRI Findings and Management**  
Amy Melsaether, M.D.12:00 pm **Interesting MSK Cases**  
Zehava Sadka Rosenberg, M.D.12:45 pm **Questions**1:00 pm **Adjourn**

You may register for this meeting Online or by completing the registration form on our website and faxing to 212-263-3959

<http://www.med.nyu.edu/courses/cme/whistler12>

### **Whistler, British Columbia, Canada**

Whistler Village radiates European charm and decidedly Canadian savoir-faire. It's a sophisticated, friendly destination where the pedestrian-only heart brims with international dining, nightlife, exceptional shopping, street entertainment and a multitude of cultural and entertainment choices.

The warm weather and the natural landscape attracts visitors with biking, hiking, fly fishing, kayaking, rafting, mountaineering, championship golf, as well as the luxury of the Four Seasons with a superb spa, pool, fine dining and wonderful kids programs!

Average temperatures this time of year are warm and sunny during the days (as high as 80 degrees) and cool and pleasant in the early mornings and evenings (as low as 50 degrees).

### **Traveling to Whistler**

The Vancouver International Airport (YVR) services most national and international airlines and is the main airport servicing Whistler. The driving distance between Vancouver and Whistler is approximately 1.5 hrs. With the Olympics, the Sea to Sky Highway was expanded and enabled a very smooth and scenic ride!

### **Shuttle Service from Vancouver Airport**

A car is not needed when in Whistler and a shuttle is recommended to and from the hotel.

NYU has negotiated a **15% discount** with **Pacific Coach** for NYU attendees. Please call 800-661-1725 and mention NYURAD12 (**Approximately \$104 per person round trip**)

### **Four Seasons Resort**

Join us at this beautiful resort - home to Whistler and the breathtaking Blackcomb mountains - a summer paradise for alpine adventure. Four Seasons Resort Whistler's 273 luxury lodge guest rooms, suites and townhouses are generously sized and capture the spirit of a luxurious mountain residence, with cozy wood interiors and gas-burning fireplaces. All five-star hotel guest accommodations offer superb views of the mountains, forest, valley, pool or courtyard from private or step-out balconies.

### **Four Seasons Village Shuttle**

The village of Whistler is within walking distance and the Four Seasons offers a complimentary shuttle service to and from the village.

### **NYU Room Block**

**Don't miss this opportunity to stay at the Luxurious Four Seasons Whistler as NYU has negotiated incomparable discounted room rates!**

**Superior: \$250** (Public rates start at \$435)  
Views of the courtyard, forest or Blackcomb or Rainbow mountains. Rooms are located on lower floors of the lodge.

**Deluxe: \$350** (Public rates start at \$545)  
Views of the surrounding Blackcomb and Rainbow mountains. Sitting area features a queen sofa bed. Rooms are located on higher floors of the lodge.

**Premier: \$395** (Public rates start at \$625)  
Best available views of the surrounding mountains. Sitting area features a queen sofa bed. Rooms are located throughout the lodge

**Four Seasons Executive Suite: \$545**  
(Public rates start at \$745)

**800 sq. ft.** The five-star luxury hotel suites are well-suited for families with a bedroom separated from the living area by a door. A balcony offers views of the courtyard or the surrounding mountains, while a wood interior and gas-burning fireplace creates a cozy atmosphere. Each suite features a sitting area, a queen sofa bed, a well-defined work area, a gas-burning fireplace and a bedroom separated from the living area by a door.

**Deluxe Four Seasons Executive Suite: \$595**  
(Public rates start at \$825)

Same as Exec Suite, but offers mountain views, 1 full bath and guest powder room with shower.

### **Internet/Gratuities**

**Wireless Internet Access in guest rooms is complimentary for the NYU Group.** Portage & maid gratuities are at guest discretion.

### **Explore Whistler!**

Biking, Hiking, Fly Fishing, Kayaking, Rafting, Mountaineering, Championship Golf, as well as the luxury of the Four Seasons with a Superb Spa, Pool, Fine Dining and wonderful Kids Programs!

NYU has planned wonderful private tours for the group so as not to conflict with the meeting agenda.

<b>Monday, July 30th</b>	Ziptrek Tour
<b>Tuesday, July 31st</b>	Whistler Rafting
<b>Wednesday, August 1st</b>	Fishing Pedal & Paddle
<b>Thursday, August 2nd</b>	Glacier Hiking

More details will be available on the NYU website: [www.radcme.med.nyu.edu](http://www.radcme.med.nyu.edu)

## NYU RADIOLOGY CME CALENDAR

### 2012

- Mar 12–16  
**10TH ANNUAL NYU RADIOLOGY ALPINE IMAGING SYMPOSIUM**  
The Chateaux Deer Valley, UT
- May 21–24  
**SPORTS MEDICINE IMAGING STATE OF THE ART: A COLLABORATIVE COURSE FOR RADIOLOGISTS AND SPORTS MEDICINE SPECIALISTS**  
NYU Langone Medical Center, New York, NY
- June 27–30  
**SUMMER RADIOLOGY SYMPOSIUM**  
The Sagamore Resort Lake George, NY
- July 30–Aug 3  
**CLINICAL IMAGING UPDATE**  
Four Seasons Whistler, Canada
- Week of Oct 8th (tentative)  
**DUAL ENERGY CT SYMPOSIUM**  
NYU Langone Medical Center, New York, NY
- Week of Oct 8th (tentative)  
**CLINICAL STATE OF THE ART BODY MRI**  
NYU Langone Medical Center, New York, NY
- Oct 22–26  
**FALL RADIOLOGY SYMPOSIUM**  
The Roosevelt Hotel, New Orleans, LA
- Dec 17–22  
**31ST ANNUAL HEAD TO TOE IMAGING CONFERENCE**  
Hilton NY, New York, NY

### For More Information:

**Michelle R. Koplik**  
Michelle.Koplik@nyumc.org  
212-263-3936

**Marisa Costello**  
Marisa.Bruno@nyumc.org  
212-263-0724



New York University  
School of Medicine  
Department of Radiology  
462 1st Avenue  
OBH, C&D Bldg, 1st FL, Rm 4  
New York, NY 10016

Non-Profit Organization  
U.S. Postage  
**PERMIT #8167**  
New York University



## Summer Radiology Symposium

*at The Sagamore  
on Lake George*

**June 27–June 30, 2012**

Bolton Landing, New York



## Clinical Imaging Symposium

*at the Four Seasons, Whistler*

**July 30–August 3, 2012**

British Columbia, Canada