



Department of Radiology
School of Medicine and Hospitals Center

Summer Radiology Symposium on the Cape

June 30 – July 3, 2008

Chatham Bars Inn
(a Grand Oceanfront Resort)
CHATHAM, CAPE COD



SAVE THE DATE
FOR 2009
June 29 – July 3, 2009
Chatham Bars Inn

Sponsored by NYU
Post-Graduate Medical School
and the Department of Radiology



Summer Radiology

General Information

PARTICIPATING FACULTY

Course Director

Genevieve L. Bennett, M.D.

Assistant Professor of Radiology
Chief, Women's Imaging

NYU Faculty

Vivian S. Lee, M.D., Ph.D., M.B.A.

Professor of Radiology,
Physiology and Neuroscience
Senior Vice President and
Chief Scientific Officer
Vice Dean for Science

Michael Macari, M.D.

Associate Professor of Radiology
Chief, Abdominal Imaging

Linda Moy, M.D.

Assistant Professor of Radiology

Maria C. Shiau, M.D.

Assistant Professor of Radiology

Maj Wickstrom, M.D.

Assistant Professor of Radiology

Guest Faculty

Elliot K. Fishman, M.D.

Professor of Radiology
and Oncology
Director, Diagnostic Radiology
and Body CT
Johns Hopkins Hospital
Baltimore, Maryland

Statement of Need

Continuous technological advances in imaging techniques need to be applied in current clinical practice. In addition, maintenance of certification requires ongoing review of essential techniques involving abdominal imaging, women's imaging, breast as well as thoracic imaging.

Target Audience

This course has been designed for clinical and academic radiologists performing body and breast imaging.

Course Description

This four-day course is intended to provide an overview of current state-of-the-art imaging techniques and applications in abdominal/pelvic, thoracic, cardiovascular, obstetric/gynecologic and breast imaging.

Lectures will focus on the appropriate utilization of CT, MR, and US in oncology, trauma, cardiovascular disease, inflammatory conditions and pregnancy. A practical approach to image interpretation will also be emphasized through the use of both didactic lectures and case-based review.

Educational Objectives

1. Use state-of-the-art multidetector CT, MR and ultrasound to improve diagnostic acumen in various disease processes in the chest, abdomen and pelvis.
2. Use the latest MDCT scanning methodology, to increase detection of colorectal polyps and recognize the utility and potential limitations of virtual colonoscopy relative to optical colonoscopy.
3. Optimize imaging protocols for specific clinical indications when evaluating patients with cardiovascular disease, by utilizing both state-of-art CT angiography and MR techniques.
4. Address issues related to nephrogenic systemic fibrosis to establish practice guidelines for performing MR studies in patients with renal insufficiency.
5. Establish appropriate imaging algorithms for the evaluation of various disorders that cause abdominal and pelvic pain in the pregnant patient to more effectively diagnose these disorders.
6. Demonstrate improved interpretation skills with MR and enhanced performance with MR-guided procedures when examining patients with breast cancer.

Accreditation Statement

The NYU Post-Graduate Medical School is accredited by the Accreditation Council for Continuing Medical Education (ACCME) to provide continuing medical education for physicians.

Symposium 2008 on the Cape



Credit Designation Statement

The NYU Post-Graduate Medical School designates this educational activity for a maximum of 19 *AMA PRA Category 1* Credits™.

Physicians should only claim credits commensurate with the extent of their participation in the activity.

Monday, June 30, 2008	4.75 Credits
Tuesday, July 1, 2008	4.75 Credits
Wednesday, July 2, 2008	4.75 Credits
Thursday, July 3, 2008	4.75 Credits
Total	19 Credits

Mammography Credits

3.6 breast imaging credits applicable to the MQSA accreditation requirements.

Breast MR Imaging Credits	1.6 Credits
Digital Mammography Credits	1 Credits

Disclosure Statement

The NYU Post-Graduate School adheres to ACCME Essential Areas and Policies, including the Standards for Commercial Support regarding industry support of continuing medical education. In order to resolve any identified Conflicts of Interest, disclosure information is provided during the planning process to ensure resolution of any identified conflicts. Disclosure of faculty and commercial relationships as well as the discussion of off-label or investigational use of any drug, device or procedure by the faculty or procedure by the faculty will be fully noted at the meeting.

Registration Information

The tuition for this four-day course is \$925; \$725 for residents/fellows/NYU alumni, retirees/VA employees, non-U.S. physicians who do not permanently reside in the U.S. On-line registration is the easiest way to enroll but we encourage you to book your air and hotel reservations first. Fees include course materials and a welcome reception plus coffee breaks. The NYU group will be on a breakfast plan during the week at the Chatham Bars Inn with breakfast charges added to your room folio.

Cancellations

If you need to cancel your enrollment, you will need to send written notification 30 or more days prior to the start of the conference. Your tuition will be refunded minus a \$75 service fee. For last-minute cancellations less than 30 days, no refunds will be possible.

Special Needs

The Post-Graduate Medical School of the New York University School of Medicine, in compliance with the legal requirements of the Americans with Disabilities Act, requests that any participant of this CME course who is in need of accommodation, submit written requests to our office at least one month prior to the course start date.

Dietary Restrictions

Please indicate any dietary restrictions on the registration form.

Special Topics/Questions

If there is a specific topic or question that would help fulfill your educational needs, please submit it on the registration form or on-line form.

On-line registration is fast & easy. Go to
WWW.RADCME.MED.NYU.EDU



Summer Radiology Program Schedule

SUNDAY, JUNE 29

4:00-6:00

Registration (Chatham Bars Inn)

6:00-7:15

Welcome Reception (Chatham Bars Inn)

MONDAY JUNE 30

Body Imaging (CT and MR)

Moderator: Genevieve L. Bennett, M.D.

7:00 – 7:50

Breakfast (Dining Room) and
Registration (Ballroom Area)

7:50 -8:00

Welcome and Introduction
Genevieve L. Bennett, M.D.

8:00 – 8:45

From Cirrhosis to HCC: The Challenges
Vivian S. Lee, M.D., Ph.D., M.B.A.

8:45 – 9:30

MDCT and MR Evaluation
of Pancreatic Masses
Michael Macari, M.D.

9:30 – 10:15

MDCT/CTA of the Kidneys
and Urinary Tract
Elliot K. Fishman, M.D.

10:15-10:30

Questions and Discussion

10:30-10:45

Break

10:45-11:25

MR Evaluation of Renal Masses:
A Case-Based Approach
Vivian S. Lee, M.D., Ph.D., M.B.A.

11:25-12:05

MDCT of the Adrenal Glands:
An Algorithmic Approach
Elliot K. Fishman, M.D.

12:05-12:45

How I Read a Virtual Colonoscopy
Michael Macari, M.D.

12:45-1:00

Questions and Discussion

TUESDAY JULY 1

**Cardiovascular Imaging:
MDCT and MR**

*Moderator: Vivian S. Lee, M.D.,
Ph.D., M.B.A.*

7:00-7:45

Breakfast (Dining Room)

7:45 – 8:30

Coronary CT Angiography:
Current State of the Art
Elliot K. Fishman, M.D.

8:30-9:15

Cardiac MRI: Case Based Review
Vivian S. Lee, M.D., Ph.D., M.B.A.

9:15-10:00

Thoracic Aorta: Acute Syndromes
Maria C. Shiau, M.D.

10:00-10:15

Questions and Discussion

10:15-10:30

Break

10:30-11:10

Peripheral MRA Including
an Update on NSF
Vivian S. Lee, M.D., Ph.D., M.B.A.

11:10-11:50

CT Angiography: Study Protocols,
Design and Optimization
Elliot K. Fishman, M.D.

11:50-12:30

MDCT in the Evaluation of
Pulmonary Thromboembolic Disease
Maj Wickstrom, M.D.

12:30-12:45

Questions and Discussion



Acknowledgement The organizers acknowledge the educational grant support received from the following organizations:

**BAYER HEALTHCARE PHARMACEUTICALS, INC.
SIEMENS MEDICAL SOLUTIONS, INC.**

Symposium 2008

on the Cape



WEDNESDAY JULY 2

Imaging of the Acute Abdomen

Moderator: Michael Macari, M.D.

7:00-7:45

Breakfast (Dining Room)

7:45-8:30

**MDCT of the Acute Abdomen:
Bowel-Related Etiologies**
Michael Macari, M.D.

8:30-9:15

**US, CT and MR Evaluation
of the Pregnant Patient
with Abdominal Pain**
Genevieve L. Bennett, M.D.

9:15-10:00

**MDCT Evaluation of
Penetrating and Blunt
Abdominal Trauma**
Michael Macari, M.D.

10:00-10:15

Questions and Discussion

10:15-10:30

Break

Women's Imaging/ Breast Imaging

Moderator: Genevieve L. Bennett, M.D.

10:30-11:10

**Role of MRI in the
Evaluation of Breast Cancer**
Linda Moy, M.D.

11:10-11:50

**Ultrasound Evaluation of
Normal and Abnormal
First Trimester Pregnancy**
Genevieve L. Bennett, M.D.

11:50-12:30

MR-Guided Breast Interventions
Linda Moy, M.D.

12:30-12:45

Questions and Discussion

THURSDAY JULY 3

Thoracic/Breast/Women's Imaging

Moderator: Linda Moy, M.D.

7:00-7:45

Breakfast (Dining Room)

7:45-8:30

**Approach to HRCT Imaging
of Lung Disease**
Maria C. Shiau, M.D.

8:30-9:15

**Digital Mammography:
An Update**
Linda Moy, M.D.

9:15-10:00

**Multimodality Imaging
Evaluation of
Adnexal Masses**
Genevieve L. Bennett, M.D.

10:00-10:15

Questions and Discussion

10:15-10:30

Break

Moderator: Maria C. Shiau, M.D.

10:30-11:10

**Imaging of Pulmonary Nodules:
An Update**
Maria C. Shiau, M.D.

11:10-11:50

Breast Imaging: Challenging Case Review
Linda Moy, M.D.

11:50-12:30

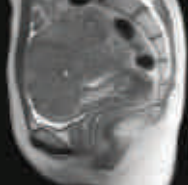
**Challenges and Pitfalls in the Female Pelvis:
Case-Based Review**
Genevieve L. Bennett, M.D.

12:30-12:45

Questions and Discussion



On-line registration is fast & easy. Go to
WWW.RADCME.MED.NYU.EDU



Summer Radiology

Hotel and Travel Information



Chatham (Cape Cod)

Chatham, Massachusetts is located on the elbow of Cape Cod, halfway between Falmouth and Provincetown. Once a quiet farming and fishing community, Chatham has become a vibrant tourist destination known for its expansive and varied beaches, seals, old historic houses and museums, in addition to its numerous shoppes and fine restaurants. The resort we selected, the Chatham Bars Inn, is a 10-minute walk to town so you can enjoy its cultural, dining and shopping diversions. Please visit their website for more information (www.chathaminfo.com). Summertime temperatures average 70 degrees in Chatham which is surrounded on almost 3 sides by navigable waters.

How to Reach Chatham

Chatham is 90 minutes from both Boston's and Providence's airports and approximately 4 hours' drive from New York City. Driving directions are found on the Chatham Bars website (www.chathambarsinn.com). Chatham is only 30 minutes from Hyannis (with limited plane service on Cape Air from Boston)..

Chatham Bars Inn (www.chathambarsinn.com)

Please join us for this conference at the Chatham Bars Inn, Chatham's Grand Oceanfront Resort. Constructed in 1914 but lovingly restored to its original grandeur, yet completely updated with the latest amenities, Chatham Bars Inn sits on 25 acres of beautifully landscaped grounds and sandy ocean beaches. Chatham Bars Inn is New England's premier year-round resort and a classic Cape Cod landmark.

The resort offers a rich variety of guest room styles and types. The historic main inn has 40 luxuriously-appointed, spacious guestrooms and private suites. For those seeking a little more seclusion, an additional 165 rooms are located in 34 private cottages and bluff homes, some of which overlook the Atlantic Ocean. A newly completed Spa has an additional 12 suites equipped with multi-jet tubs.

Activities are endless at Chatham Bars Inn with its outdoor heated pool, tot pool, and quarter-mile of private beach to soak up the Atlantic sun and surf. The resort has three classic tennis courts with pro shop and instruction available. Chatham Bars Inn has been named one of the top resorts in the world by Travel & Leisure Magazine, and the best hotel on Cape Cod by Boston Magazine.

Main Inn

The Main Inn includes the elegant Dining Room with expansive windows



overlooking the Atlantic with dishes prepared by world-class chefs, the cozy Tavern

for fireside dining, and the spacious South Lounge and Library for relaxation. Lined in oak wood ceiling beams and posts, the lobby is appointed with antique furnishings and lavish Oriental rugs over hardwood floors. The ocean-view Verandah is just steps away.

The hotel offers a wide variety of guest services including: concierge, full-service business center, complimentary wireless internet access, full fitness center and spa, gift shop, lounge, laundry/dry-cleaning, luxurious bed linens and hand-painted furniture, mini-bars, nightly turndown, in-room safes, irons, hair dryers. Rooms in the Main Inn are located on the second or third floors, most with decks or balconies and many with sweeping ocean views. Main Inn rooms have one or two queen-size beds.

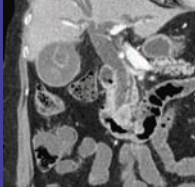
Cottages

Most of the hotel rooms are situated in cottages dotting the 25 acres of gardens. These individually and tastefully decorated accommodations boast hand-painted furniture, hardwood floors, and bay windows with ocean or garden views. Many also have decks or fireplaces. Cottage rooms have one king or two queen-size beds.

Master Suites

Master Suites include a spacious living room with wet bar, fireplace, two televisions, dining area and luxurious bath. Some suites offer decks and a balcony. Master Suites are available with one king or two-queen size beds.

Symposium 2008 on the Cape



Room Rates

Main Inn and Cottage room and suite rates do not include taxes or resort fees.

Property View Rooms	\$339/night
Ocean-View Rooms	\$389/night
Property-View Suite	\$500/night
Ocean-View Suite	\$599/night

Note: The daily resort fee is \$14 per day (unlimited local phone calls, bike rentals, boat shuttle, morning lobby coffee, trolley shuttle, bottled water at turndown, valet parking, fitness center, newspapers, children's program and wireless internet); and state and local room taxes are currently 9.7%.

Full American Plan

The NYU group will be on the Full American Plan which means that guests will be entitled to an extensive breakfast buffet served in the Main Dining Room from 7-11 a.m. daily. In addition to the rates at left, breakfast pricing below will be added to your guestroom rates:

Adult Buffet	\$22/person + tax & gratuity
Child Buffet	\$11/child 12 and under + tax & gratuity
Children 4 & Under	Free

How To Reserve Your Accommodations at the Chatham Bars Inn

Please complete and return the Chatham Bars/NYU Reservation Form on page 12 and fax it to the hotel at 508-945-6785. In case of questions about accommodations, you may call the hotel at 800-527-4884.

The cut-off date for room reservations is May 2, 2008. Reservations received after this date will be accepted on a space-available basis. It is possible that our block could be filled sooner than May 2nd.

Extending Your Stay Through the July 4th Weekend

You are welcome to extend your stay (at our NYU special discounted rates) but we strongly encourage you to book your room/suite as early as possible. The town of Chatham has a July 4th morning parade and it would be a festive weekend on the Cape.



Chatham Bars Inn Children's Program (more on www.chathambarsinn.com)

Chatham Bars Inn boasts an award-winning children's program to make each child's visit there an unforgettable one. The programs are complimentary with morning, afternoon and evening sessions to offer flexibility. Counselors have extensive experience and are CPR and First-Aid Certified.

PLEASE BE CERTAIN TO MENTION THE AGES AND NUMBER OF CHILDREN IN YOUR PARTY ON THE HOTEL RESERVATION FORM. NO ADVANCE RESERVATIONS ARE NEEDED FOR THE CHILDREN'S PROGRAM.

Beach Buddies – Children ages 4 and up will enjoy meeting and playing with their fellow Beach Buddies. Interactive games, art and crafts and mini-adventures keep the kids coming back.

Clam Diggers – Children ages 7 and up are invited. Some of the activities offered include homemade tee-shirts, animal tracking, wacky beach Olympics and costume karaoke. Children must be able to swim to participate in this program.



Wash-A-Shores – Children ages 10 and up will embark on adventures on property and off. The group will venture by boat to the outer beach, take a tour of the lighthouse and even report on what's happening around the resort on their own news channel.

Teens – Young adults will enjoy the Teen Program offering activities such as bicycle tours, tennis clinics, etc.

On-line registration is fast & easy. Go to
WWW.RADCME.MED.NYU.EDU





Summer Radiology

Optional Group Activities



The following activities and group functions are offered on a private basis so as not to conflict with the NYU meeting agenda. Any morning optional activities that we have included are intended for the guest/spouse of the meeting participant. Please sign up in advance and note the cancellation terms which will apply. You may sign up on the Registration Form found on page 11 of this brochure (or on-line). Prices are subject to change if minimum numbers are not met.

SUNDAY, JUNE 29TH

6:00 – 7:15 p.m. **Welcome Reception at the Beach House Grille** (*no sign-up is necessary*)

MONDAY, JUNE 30TH

10:00 – Noon **Barrier Beach Walk**

The eastern-most stretch of barrier beach is where the Gulf Stream meets the Gulf of Maine in a swirl of ocean currents. This informative walk led by our naturalist focuses on the function and importance of barrier beaches, cyclical breaches and the wildlife that inhabit the area. **\$20 per adult and \$10 per child under 12 (12-adult minimum & 15-person maximum)**

2 – 3 p.m. and 3:30 – 4:30 p.m. **Antique Car Tour of Chatham**

Take a seat in our vintage 1929 Ford Model A Woody for a historic tour of Chatham. Your tour includes Chatham Light, the break-through, Monomoy Wildlife Refuge, gristmill, drawbridge and some of the most beautiful private residences in town. And as you take in the sights, Chatham residents will be looking at you! **\$30 per person (5 persons per car maximum, limited to 10 persons)**

Evening **Old-Fashioned Clambake at the Chatham Bars Inn**

The hotel typically offers an Old-Fashioned Clambake on Monday and Wednesday evenings during the summer. We encourage you to make a reservation for the clambake as early as possible as this popular event typically sells out. (Pricing and timing not available during brochure preparation; if you decide to go, you will be able to charge this to your room.) (*This has not been exclusively arranged for our NYU group.*)

6:00 – 10:00 p.m. **The Chef's Table**

Have you ever dreamed of having a meal prepared by your own private chef? The Chef's Table & Wine Cellar features the culinary talent of some of the greatest chefs in New England and one will prepare a private tasting menu of his/her favorite creations as you and your guests watch. Each dish is served with an appropriate wine selected from the wine cellar. **\$225 price per person plus tax & gratuity (\$283.50 inclusive); you will be able to charge this to your room (12-person minimum and 24-person maximum)**



TUESDAY, JULY 1ST

3:00 – 5:30 p.m. **Guided Bike Tour**

Join a guided tour through the back roads of Chatham. A knowledgeable guide will share the area's rich and local history and fragile coastal ecology. **\$20 per person tour fee plus \$20 per person bike rental fee, if applicable (11-person minimum and 12-person maximum per group)**

2:00 – 4:00 p.m. **Catamaran Excursion**

Explore Cape Cod with routes through Hyannis Harbour to Hyannisport and into the Nantucket Sound. **\$55 per person, including transportation to Hyannis from CBI. No children's rates possible (maximum of 22 passengers on this 34' cat with a 38' sail; 18-person minimum)**



Symposium 2008 on the Cape



WEDNESDAY, JULY 2ND

10:30 a.m. – 12:30 p.m. **Chowder Cooking Demo**

Take a break from outdoor activities and take your place at The Chef's Table to learn the latest techniques in making "chow-dah", the real New England way. Twin plasma screens mounted above the demonstration kitchen ensure you never miss a step. It's a unique experience for both the skilled and novice chef. **\$93.75 including tax & gratuity (12-person minimum and 20-person maximum) (you can charge to your room)**



2 – 5 p.m. **Guided Nature Walk**

A naturalist will guide your group on a walk through the Monomoy National Wildlife Refuge on Morris Island. The Refuge's 40-acres of varied habitats include oceans, salt and freshwater marshes, and dunes and freshwater ponds that support an amazing diversity of wildlife and plant species. Piping plover, roseate tern, osprey, horseshoe crabs and gray seals call the refuge home. **\$20 per person (13-person minimum and 15-person maximum)**

2 – 6 p.m. **Golf Tournament**

We'll reserve a few tee-times for interested golfers in our group at a local course called Captain's Golf Course (in Brewster) which is 10-12 minutes away. They have two national championship 18-hole golf courses. Just indicate on the form if you are interested in participating and we'll get back in touch with you with details.

Evening **Old-Fashioned Clambake at the Chatham Bars Inn**

Please see Monday's activities for description.

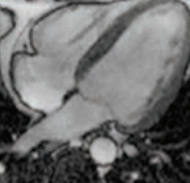
OTHER THINGS TO DO IN THE AREA ON YOUR OWN:

(The Hotel Concierge can assist in setting up other things to do on your own)

- Fly-Fishing Clinics, Sportfishing
- Windsurfing
- Kayaking (www.ospreykayak.com)
- Sailing
- Monomoy Theatre – summer performances and the Cape Cod Symphony Orchestra
- Monomoy National Wildlife Refuge – 8,000 acres with some of the finest bird and wildlife watching on Cape Cod; playful seals – even take a water tour to watch them even closer.
- Chatham Conservation Foundation – 500 acres with trails
- Cape Cod Rail Trail – the Cape's longest bike route extending for 26 miles
- Whale-watching
- Visit the Cape Cod National Seashore, 30 minutes away
- Visit Provincetown on the end of the Cape (45 minutes away)
- Art galleries, antiquing, museums



On-line registration is fast & easy. Go to
WWW.RADCME.MED.NYU.EDU



Summer Radiology

Hotel Reservation Form

CHATHAM BARS INN RESERVATION FORM NYU MEDICAL SUMMER RADIOLOGY SYMPOSIUM

June 30-July 3, 2008

Please return this form to **CHATHAM BARS INN** via fax no later than **May 2, 2008**. Reservations received after this date will be accepted on a space available basis only.



Type of Accommodation Requested

Below are the negotiated group rates for the NYU Medical Summer Radiology Symposium. These rates are subject to a \$14 daily resort fee and 9.7% state and local room tax.

Please indicate below what your room type preference is.

- ROOM:** \$339/Property View
 \$389/Ocean View
- SUITE:** \$500/Property View
 \$599/Ocean View

Chatham Bars Inn is pleased to offer a Full American Plan. Breakfast pricing, as indicated below, will be added to the above guestroom rates based on the number and ages of each guestroom occupant.

Adult Breakfast Buffet

\$22/person + tax & gratuity

Child Breakfast Buffet

\$11/child (ages 12 & under) + tax & gratuity

Children 4 & Under

No charge

The Breakfast Buffet is served in the Main Dining Room from 7AM – 11AM daily

Deposit/Cancellation Policy

All room reservations must be booked directly with Chatham Bars Inn and not through NYU Medical Center. A deposit of 50% of the total stay is due at booking. The remainder of the guestroom balance will be billed to each individual at the cut off date (5.2.08) Reservations cancelled less than 60 days prior to arrival, will result in forfeiture of your payment. Reservations cancelled more than 60 days prior to your arrival will be refunded minus a USD \$50.00 cancellation fee.



Please Print

Name: _____

Please indicate the number of adults and children (including ages) staying in the room.

Number of Adults: _____

Number of Children & Ages: _____

Based on the numbers above, the breakfast charges will be added directly to the guestroom rate.

Mailing Address: _____

City/Town: _____ State: _____ ZIP Code: _____

Telephone (Daytime) _____

(Fax) _____

Payment Information (MasterCard, Visa, Discover, & Diners Club)

Credit Card Number: _____

Expiration Date: _____

Signature: is required _____

(I authorize the use of my credit card in accordance to the terms stated above)

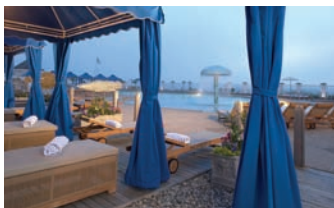
Email Address: _____

Arrival Date: _____ Departure Date: _____

Check-in: After 4:00 p.m. Check-out: By 11:00 a.m.

Special Hotel Requests: _____

The reservation cut-off date is **May 2, 2008**.



Please return this form via fax to:

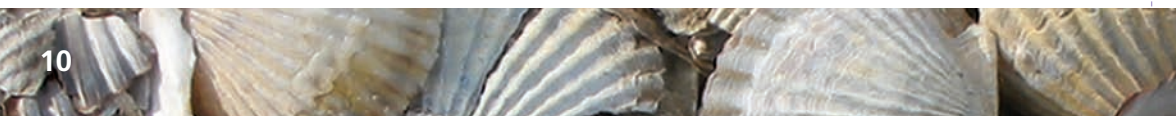
CHATHAM BARS INN

Telephone: 508-945-0096: Fax: 508-945-6785

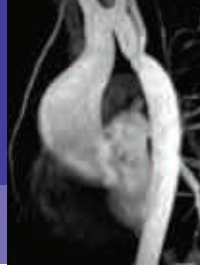
Reservations: 800-527-4884

Clip & Mail

On-line registration is fast & easy. Go to WWW.RADCME.MED.NYU.EDU



Symposium 2008



Course Registration Form

NYU DEPARTMENT OF RADIOLOGY
SUMMER RADIOLOGY PRACTICUM on the cape

June 30-July 3, 2008

On-Line Registration is Fast & Easy. Go to www.radcme.med.nyu.edu

Participant Information (please print clearly)

Name: _____
Address _____
City _____
State _____ Zip _____
Daytime Phone _____
Fx _____
Email _____
Degree _____
Specialty _____
Sub-Specialty _____
Dietary Restrictions _____

Payment Method

- Check in U.S. Dollars payable to NYU Department of Radiology
- Credit Card
- Cardmember's Name (print carefully) _____
Card # _____
Amount to be Charged: \$ _____
Bill to: Visa MasterCard American Express
Exp Date: (MM/YYYY) _____ / _____
Signature (required to process) _____
- International Postal Money Order (for overseas participants not wishing to submit credit card information)

Registration Fees

Full Fees (Physicians) \$925 Discounted Fees (see below for qualifications) \$725 discounted fee*

*discounts apply to NYU School of Medicine alumni, former residents & fellows, techs, physicists and MD's employed by the Dept of Veterans Affairs and full-time active military personnel and all non-U.S. physicians

Reason for discount: _____

Email Confirmations: If you provide your email, we will send you an email confirmation. We no longer send out written or faxed confirmation/receipts.

Refund Policy: If you need to cancel, you will need to send written notification 30 or more days in advance (subject to a \$75 service fee). No refunds are possible thereafter.

Course Cancellation Policy: In the unusual circumstance that this course is cancelled, two weeks' notice will be provided and full tuition refunded. The NYU Post-Graduate Medical School is not responsible for any airfare, hotel or other costs incurred.

Educational Needs

If there is a specific question or topic relating to this course, please submit it on the registration form or on the website when registering on-line.

Advance registration required for activities prior to May 31, 2008 There is no guarantee that you can sign up on-site for these activities.

Sunday Evening (no need to sign up but there will be a Welcome Reception)

Monday Morning Barrier Beach Walk #__ @\$20 per adult #__ @\$10 per child under 12
Monday Afternoon Antique Car Tour #__ @\$30 per person __ 2 – 3 p.m. __ 3:30 – 4:30 p.m.
Monday Evening Chef's Table & Wine Cellar #__ @\$283.50 inclusive per person
(includes tax, tip and wines throughout the evening)

Tuesday Afternoon Guided Bike Tour #__ @\$20 per person without bike rental
#__ @\$40 per person with bike rental

Tuesday Afternoon Catamarin Excursion #__ @\$55 per person
(including transportation, tax, and gratuity) (on-board beverages would be separate)

Wednesday Morning Chowder Cooking Demo #__ @\$ 93.75 per person

Wednesday Afternoon Guided Nature Walk #__ @\$20 per person

Wednesday Afternoon Golf Tournament #__ price TBD
(sign up now and we will let you know more details in the spring)

TOTAL OF ACTIVITIES: \$ _____

PAYMENT METHOD: Check in U.S. Dollars (payable to NYU Department of Radiology)
 Credit Card (see top half of this form)

Activities Refund Policy: A full refund will be granted if written cancellation is sent via email to michelle.koplik@nyumc.org no later than June 15th. No refunds are possible thereafter unless we are able to sell your ticket to another member of the group.

In Case of Questions:
Contact:
Michelle Koplik (212) 263-3936 or
Marisa Bruno (212) 263-0724

Where to Fax or Mail:
Michelle Koplik,
NYU Medical Center
560 1st Avenue, HW-231
New York, NY 10016
Fax: (212) 263 3959

2008

Jan. 7-11	Emergency Imaging Update	Nevis
Feb. 4-8	Clinical Imaging Update	Lana'i, HI
March 3-7	Imaging Update	Snowmass, CO
March 17-21	Clinical Imaging Essentials	Deer Valley, UT
April 25-26	Virtual Colonoscopy Workshop	South Beach, FL
May 16-18	5th Annual Sports Medicine Imaging Conference	New York, NY
June 30- July 3	Summer Radiology Practicum	Chatham, MA
Sept. 19-21	MRI: Clinical State of the Art	New York, NY
Oct.	Virtual Colonoscopy Workshop	New York, NY
Dec. 15-20	27th Annual Head to Toe Imaging Conference	New York, NY

2009

Jan. 5-9	Essentials of Imaging	Costa Rica
Jan. 27-31	NYU Radiology	Hualalai, HI
March 9-13	NYU Imaging Update	Snowmass, CO
<i>Tentative</i> March	Clinical Imaging Essentials	Deer Valley, UT
Spring	Virtual Colonoscopy Workshop	South Beach, FL
Spring	6th Annual Sports Medicine Imaging Conference	New York, NY
June 29- July 3	Summer Radiology Practicum	Chatham, MA
Fall	MRI: Clinical State-of-the-Art	New York, NY
Fall	Virtual Colonoscopy Workshop	New York, NY
Dec. 14-19	28th Annual Head to Toe Imaging Conference	New York, NY

More to be announced for 2009

FOR MORE INFORMATION, CONTACT:

Michelle R. Koplik
Michelle.Koplik@nyumc.org
(212) 263 3936

Marisa Bruno
Marisa.bruno@nyumc.org
212-263-0724

WWW.RADCME.MED.NYU.EDU



Department of Radiology

School of Medicine and Hospitals Center

New York University
School of Medicine
Department of Radiology
560 1st Avenue, TCH-HW-231
New York, NY 10016

Summer Radiology Symposium

on the Cape



JUNE 30 – JULY 3, 2008

Chatham Bars Inn
CHATHAM, CAPE COD