

# SUMMER RADIOLOGY SYMPOSIUM

*on the Cape*

June 29–July 3, 2009

Chatham Bars Inn

A Grand Oceanfront Resort

CHATHAM, CAPE COD



Langone Medical Center

Department of Radiology

*Sponsored by the NYU Post-Graduate Medical School*



# BODY AND BONE

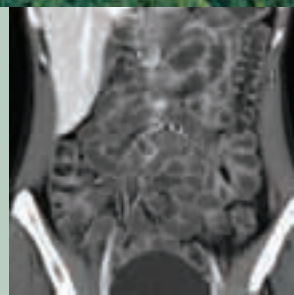
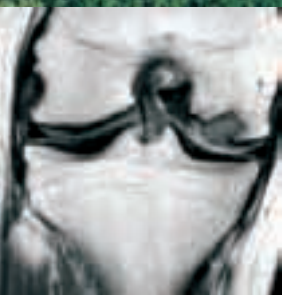
*in Banff*

August 3–7, 2009

The Fairmont Banff Springs

A Vast Mountain Resort

BANFF, CANADA



# Summer Radiology Symposium

## General Information

### Summer Radiology Symposium

June 29 – July 3, 2009

#### Participating Faculty

##### Course Director

**Bidyut K. Pramanik, M.D.**

Assistant Professor of Radiology

##### NYU Faculty

**Jenny T. Bencardino, M.D.**

Associate Professor of Radiology

Director of Clinical Musculoskeletal MRI

**Bernard A. Birnbaum, M.D.**

Professor of Radiology

Vice Dean, Chief of Hospital Operations

NYU Langone Medical Center

**Jane P. Ko, M.D.**

Associate Professor of Radiology

**Vivian S. Lee, M.D., Ph.D., M.B.A.**

Professor of Radiology and

Physiology and Neuroscience

Vice Dean for Science,

Chief Scientific Officer

NYU Langone Medical Center

**Maj Wickstrom, M.D.**

Assistant Professor of Radiology

#### Educational Objectives

- Select appropriate advanced imaging techniques for internal derangements of the shoulder and upper extremity.
- Optimize imaging protocols for specific clinical indications when evaluating patients with cardiovascular disease, by utilizing both state-of-art CT angiography and MR techniques.
- Accurately identify imaging findings that narrow the differential diagnosis of the abnormal liver, kidney, adrenal gland, pancreas and bowel for optimal patient care.
- Assess advanced imaging techniques including CTA, CTP and MRA and their application in clinical practice in the evaluation of stroke, carotid disease and other conditions, as well as the risk of complications of therapy.
- Describe the recent developments in the understanding of nephrogenic systemic fibrosis and their impact on the clinical management of patients with renal insufficiency, as well as a strategy to incorporate this into practice.
- Describe strategies used in the diagnosis of lung cancer neoplasms and review dose conserving methods for CT pertaining to clinical protocols for chest imaging.

#### Statement of Need

It is imperative to stay abreast of the most up-to-date imaging protocols when examining the regions of the abdomen, brain and chest. In order to improve image interpretation, practicing and clinical radiologists must stay up-to-date on appropriate advanced imaging techniques, including MDCT, US, MRI and CT in order to diagnose a wide-range of illnesses, including liver masses, renal insufficiency, cardiovascular disease, stroke, TMJ disorders and lung cancer.

#### Target Audience

This course is designed for clinical radiologists in academic or private practice. Didactic lectures with many case-based clinical examples.

#### Course Description

This course is designed to demonstrate how to accurately identify imaging findings that narrow the differential diagnosis of the abnormal liver, kidney, adrenal gland, pancreas and bowel for optimal patient care. By learning up-to-date imaging protocols, you will also review the fundamentals of neuroimaging of the brain and head & neck for more accurate diagnosis and optimal patient care. The participant will learn how to utilize new strategies/pulse sequences in CT and MR, and apply this understanding to enhance clinical practices. Dose conserving methods for CT will be covered pertaining to clinical protocols for chest imaging.

#### Accreditation Statement

The NYU Post-Graduate Medical School is accredited by the Accreditation Council for Continuing Medical Education to provide continuing medical education for physicians.

#### Registration Information

Online registration is the easiest way to enroll, but we encourage you to book your air and hotel reservations first. Please see page 6 for registration fees. Fees include course materials, daily breakfasts and coffee break for registrants, and a welcome reception.

#### Credit Designation Statement

The NYU Post-Graduate Medical School designates this educational activity for a maximum of 16 *AMA PRA Category 1 Credits*<sup>™</sup>. Physicians should only claim credits commensurate with the extent of their participation in the activity.

#### Disclosure Statement

The NYU Post-Graduate School adheres to ACCME Essential Areas and Policies, including the Standards for Commercial Support regarding industry support of continuing medical education. In order to resolve any identified Conflicts of Interest, disclosure information is provided during the planning process to ensure resolution of any identified conflicts. Disclosure of faculty and commercial relationships as well as the discussion of off-label or investigational use of any drug, device or procedure by the faculty or procedure by the faculty will be fully noted at the meeting.

#### Special Needs

The Post-Graduate Medical School of the New York University School of Medicine, in compliance with the legal requirements of the Americans with Disabilities Act, requests that any participant of this CME course who is in need of accommodation, submit written requests to our office at least one month prior to the course start date.

## Program Schedule

### Sunday, June 28

4:00–6:00PM

#### **Registration**

(Monomoy Ballroom)

6:00–7:30PM

#### **Welcome Reception**

### Monday, June 29

7:00AM

#### **Registration and Breakfast for Registrants**

(Monomoy Ballroom)

7:50AM

#### **Welcome**

Bidyut K. Pramanik, M.D.

8:00–8:30AM

#### **Liver Masses on MRI: Principles and Practice**

Vivian S. Lee, M.D., Ph.D., M.B.A.

8:30–9:00AM

#### **Renal MRA: Form to Function**

Vivian S. Lee, M.D., Ph.D., M.B.A.

9:00–9:45AM

#### **Non-Contrast-Enhanced MRA and an Update on NSF**

Vivian S. Lee, M.D., Ph.D., M.B.A.

9:45–10:00AM

#### **Questions & Discussion**

10:00–10:15AM

#### **Coffee Break**

10:15–11:00AM

#### **Advanced CT in Acute Stroke**

Bidyut K. Pramanik, M.D.

11:00–11:30AM

#### **Neurovascular Imaging**

Bidyut K. Pramanik, M.D.

11:30AM–12:15PM

#### **MDCT of Acute Abdominal Trauma**

Bernard A. Birnbaum, M.D.

12:15–12:30PM

#### **Questions & Discussion**

#### **Acknowledgement Statement**

The organizers gratefully acknowledge the educational support received from the following organizations:

- Bayer HealthCare Pharmaceuticals
- Siemens Medical Solutions

### Tuesday, June 30

7:15AM

#### **Breakfast for Registrants**

(Monomoy Ballroom)

8:00–8:30AM

#### **MDCT of Acute Appendicitis**

Bernard A. Birnbaum, M.D.

8:30–9:00AM

#### **RLQ Pain: CT Differential Diagnosis**

Bernard A. Birnbaum, M.D.

9:00–9:45AM

#### **Solitary Pulmonary Nodule Management**

Jane P. Ko, M.D.

9:45–10:00AM

#### **Questions & Discussion**

10:00–10:15AM

#### **Coffee Break**

10:15–11:00AM

#### **Diffuse Nodular Disease on HRCT**

Jane P. Ko, MD

11:00–11:30AM

#### **Cardiac MR: A Primer**

Vivian S. Lee, M.D., Ph.D., M.B.A.

11:30AM–12:15PM

#### **Pelvic MRI Case Conference**

Vivian S. Lee, M.D., Ph.D., M.B.A.

12:15–12:30PM

#### **Questions & Discussion**

### Wednesday, July 1

#### **Free Day**

### Thursday, July 2

7:15AM

#### **Breakfast for Registrants**

(Monomoy Ballroom)

8:00–8:30AM

#### **MR Variants and Pitfalls of the Shoulder**

Jenny T. Bencardino, M.D.

8:30–9:00AM

#### **Imaging of the Brachial Plexus**

Bidyut K. Pramanik, M.D.

9:00–9:45AM

#### **Shoulder Instability**

Jenny T. Bencardino, M.D.

9:45–10:00AM

#### **Questions & Discussion**

10:00–10:15AM

#### **Coffee Break**

10:15–11:00AM

#### **Lung Cancer Staging**

Jane P. Ko, M.D.

11:00–11:30AM

#### **Acute Aortic Pathology: Pre and Post Operative Evaluation**

Jane P. Ko, M.D.

11:30AM–12:15PM

#### **Entrapment Neuropathies of the Upper Extremity**

Jenny T. Bencardino, M.D.

12:15–12:30PM

#### **Questions & Discussion**

### Friday, July 3

7:15AM

#### **Breakfast for Registrants**

(Monomoy Ballroom)

8:00–8:30AM

#### **CT of Airways Disease**

Maj Wickstrom, M.D.

8:30–9:00AM

#### **MR Imaging of the Foot: Heel to Toe**

Jenny T. Bencardino, M.D.

9:00–9:45AM

#### **CT of Pulmonary Embolism**

Maj Wickstrom, M.D.

9:45–10:00AM

#### **Questions & Discussion**

10:00–10:15AM

#### **Coffee Break**

10:15–11:00AM

#### **Sports Injuries of the Hip**

Jenny T. Bencardino, M.D.

11:00–11:30AM

#### **Open Wide: MR of the TMJ**

Bidyut K. Pramanik, M.D.

11:30AM–12:00PM

#### **Practical Neuroradiology Cases**

Bidyut K. Pramanik, M.D.

12:00–12:15PM

#### **Questions & Discussion**

12:15PM

#### **Adjournment**

# Summer Radiology Symposium

## Hotel and Travel Information

### Chatham (Cape Cod)

Chatham, Massachusetts is located on the elbow of Cape Cod, halfway between Falmouth and Provincetown. Once a quiet farming and fishing community, Chatham has become a vibrant tourist destination known for its expansive and varied beaches, seals, old historic houses and museums, as well as its numerous shops and fine restaurants. The Chatham Bars Inn is a 10 minute walk to town so you can enjoy its cultural, dining and shopping diversions. Summertime temperatures average 70 degrees in Chatham, which is surrounded on almost 3 sides by navigable waters.

([www.chathaminfo.com](http://www.chathaminfo.com))

### How to Reach Chatham

Chatham is 90 minutes from both Boston's and Providence's airports and approximately 4 hours' drive from New York City. Driving directions are found on the Chatham Bars Inn website ([www.chathambarsinn.com](http://www.chathambarsinn.com)). Chatham is only 30 minutes from Hyannis.

### Chatham Bars Inn ([www.chathambarsinn.com](http://www.chathambarsinn.com))

Chatham Bars Inn is Chatham's grand oceanfront resort and classic Cape Cod Landmark. Constructed in 1914, but lovingly restored to its original grandeur, Chatham Bars Inn is completely updated with the latest amenities and sits on 25 acres of beautifully landscaped grounds and sandy ocean beaches.

#### Cottages

Most of the hotel rooms are situated in cottages dotting the 25 acres of gardens. These individually decorated accommodations boast hand-painted furniture, hardwood floors, and bay windows with ocean or garden views.

#### Main Inn

The Main Inn includes the elegant Dining Room, the cozy Tavern for fireside dining, and the spacious South Lounge and Library for relaxation.

#### Master Suites

Master Suites include a spacious living room with wet bar, fireplace, two televisions, dining area and luxurious bath. Some suites offer decks and a balcony.

#### Room Rates

Property-View Rooms	\$371/night
Ocean-View Rooms	\$421/night
Property-View Suite	\$541/night
Ocean-View Suite	\$645/night

Rates do not include taxes or resort fees. The daily resort fee is \$14 per day (unlimited local phone calls, bike rentals, boat shuttle, morning lobby coffee, trolley shuttle, bottled water at turndown, valet parking, fitness center, newspapers, children's program and wireless internet). State and local room taxes are currently 9.7%.

### Reservations

Online reservations can be made by visiting [www.med.nyu.edu/courses/cme/chatham09](http://www.med.nyu.edu/courses/cme/chatham09). Or you can fax the reservation form on page 5 to the hotel at 508-945-6785. In case of questions, please call 800-527-4884. **The cutoff date for room reservations is May 1, 2009.** Reservations received after this date will be accepted based upon availability.

### Chatham Bars Inn Complimentary Children's Program (no pre-registration required)

Chatham Bars Inn boasts an award-winning children's program to make each child's visit an unforgettable one. The programs are complimentary, with morning, afternoon and evening sessions to offer flexibility. Counselors have extensive experience and are CPR and First Aid Certified. *Please be certain to mention the ages and number of children in your party on the hotel reservation form. No advance reservations are needed for the children's program.*

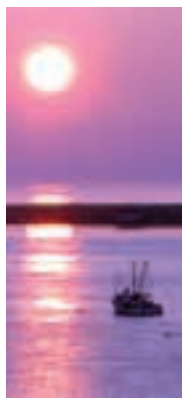
**Beach Buddies** – Children ages 4 and up  
**Clam Diggers** – Children ages 7 and up  
**Wash-A-Shores** – Children ages 10 and up  
**Teens** – Young adults will enjoy the Teen Program offering activities such as bicycle tours, tennis clinics, etc.

### Wequassett Resort & Golf Club

(<http://www.wequassett.com/>)

Cape Cod's premier resort, this beautiful property with four-diamond luxury accommodations is just 5 minutes by car from Chatham Bars.

Enjoy acclaimed cuisine, championship golf and pure relaxation in an idyllic waterfront setting. The Wequassett Resort is offering NYU registrants a discounted rate of **\$450/night on all rooms, first come first serve basis, based on availability.** Please call 800-225-7125 and mention you are with NYU Radiology to receive the discounted rate.



You may register for this meeting online at  
[www.med.nyu.edu/courses/cme/chatham09](http://www.med.nyu.edu/courses/cme/chatham09)

# On the Cape

## Hotel Reservation Form

NYU Department of Radiology

### Summer Radiology Symposium *On the Cape*



June 29 - July 3, 2009

#### Please return this form

to **CHATHAM BARS INN** via fax no later than **5.1.09**. Reservations received after this date will be accepted on a space available basis only.

#### Type of Accommodation Requested

Below are the negotiated group rates for the NYU Summer Radiology Symposium. These rates are subject to a \$14 daily resort fee and 9.7% state and local room tax.

Please indicate below what your room type preference is.

- ROOM:**  \$371/Property View  
 \$421/Ocean View
- SUITE:**  \$541/Property View  
 \$645/Ocean View

#### Deposit/Cancellation Policy

All room reservations must be booked directly with Chatham Bars Inn and not through NYU Medical Center. A deposit of 50% of the total stay is due at booking. The remainder of the guestroom balance will be billed to each individual at the cutoff date (5.1.09). Reservations cancelled less than 60 days prior to arrival will result in forfeiture of your payment. Reservations cancelled more than 60 days prior to your arrival will be refunded minus a USD \$50.00 cancellation fee.

#### Hotel Reservations may also be booked online at:

<http://www.med.nyu.edu/courses/cme/chatham09>



#### Please Print

Name: \_\_\_\_\_

Please indicate the number of adults and children (including ages) staying in the room.

Number of Adults: \_\_\_\_\_

Number of Children & Ages: \_\_\_\_\_

*Based on the numbers above, the breakfast charges will be added directly to the guestroom rate.*

Mailing Address: \_\_\_\_\_

City/Town: \_\_\_\_\_ State: \_\_\_\_\_ Zip Code: \_\_\_\_\_

Telephone (Daytime): \_\_\_\_\_

(Fax) \_\_\_\_\_

#### Payment Information (MasterCard, Visa, Discover, & Diners Club)

Credit Card Number: \_\_\_\_\_

Expiration Date: \_\_\_\_\_

Signature: \_\_\_\_\_

(I authorize the use of my credit card in accordance to the terms stated above)

Email Address: \_\_\_\_\_

Arrival Date: \_\_\_\_\_ Departure Date: \_\_\_\_\_

Check-in: After 4:00 p.m. Check-out: By 11:00 a.m.

Special Hotel Requests: \_\_\_\_\_

**The reservation cutoff date is 5.1.09**

Please return this form via fax to:

### CHATHAM BARS INN

Telephone: 508-945-0096

Fax: 508-945-6785

Reservations: 800-527-4884

# Summer Radiology Symposium

## Course Registration Form

*On the Cape*

NYU Department of Radiology

## Summer Radiology Symposium *On the Cape*



June 29- July 3, 2009

You may register for this meeting online at [www.med.nyu.edu/courses/cme/chatham09](http://www.med.nyu.edu/courses/cme/chatham09)

### Participant Information (please print clearly)

Name: \_\_\_\_\_

Address: \_\_\_\_\_

City: \_\_\_\_\_

State: \_\_\_\_\_ Zip: \_\_\_\_\_

Daytime Phone: \_\_\_\_\_

Fax: \_\_\_\_\_

Email: \_\_\_\_\_

Degree: \_\_\_\_\_

Specialty: \_\_\_\_\_

Sub-Specialty: \_\_\_\_\_

Dietary Restrictions: \_\_\_\_\_

### Payment Method

**Check in U.S. Dollars** payable to NYU Department of Radiology

**Credit Card**

Card member's Name  
(print carefully): \_\_\_\_\_

Card #: \_\_\_\_\_

Amount to be Charged: \$ \_\_\_\_\_

Bill to:  Visa  MasterCard  American Express

Exp Date: (MM/YYYY) \_\_\_\_\_ / \_\_\_\_\_

Signature (required to process): \_\_\_\_\_

### Registration Fees

**Full Fees (Physicians)**      **Discounted Fees** (see below for qualifications)

\$925

\$750 discounted fee\*

\* Discounted Fees apply to: NYU School of Medicine alumni, M.D.s employed by the Department of Veterans Affairs, full-time active military personnel, technologists, retired physicians, current residents/fellows and non-U.S. physicians.

Reason for discount: \_\_\_\_\_

**Email Confirmations:** If you provide your email, we will send you an email confirmation. We no longer send out written or faxed confirmation/receipts.

**Refund Policy:** If you need to cancel, you will need to send written notification 30 or more days in advance (subject to a \$75 service fee). Refunds will be possible after this date subject to a \$150 service fee.

**Course Cancellation Policy:** In the unusual circumstance that this course is cancelled, two weeks' notice will be provided and full tuition refunded. The NYU Post-Graduate Medical School is not responsible for any airfare, hotel or other costs incurred.

### Educational Needs

If there is a specific question or topic relating to this course, please submit it on the registration form or on the website when registering online.

*For questions regarding registration or optional activities, please contact*  
**Marisa.Bruno@nyumc.org or 212-263-0724**

*The following activities and group functions are offered on a private basis so as not to conflict with the NYU meeting agenda. Any morning optional activities that we have included are intended for the guest/spouse of the meeting participant. Advance registration required for activities. Activities are subject to cancellation if minimum numbers are not met.*

**Monday Morning Barrier BeachWalk (9:30AM & 11:10AM)**

**Monday Afternoon Antique Car Tour (2:00PM & 3:30PM)**

**Tuesday Afternoon Guided Bike Tour (3:00PM-5:00PM)**

**Wednesday All-Day Hyline Tour of Martha's Vineyard (8:00AM-6:00PM)**

**Thursday Afternoon Guided Nature Walk (2:00PM & 3:30PM)**

**Thursday Evening Clambake (5:00PM)**

For more details, pricing and to sign up for any of the optional activities, please visit  
[www.med.nyu.edu/courses/cme/chatham09](http://www.med.nyu.edu/courses/cme/chatham09)

# Body and Bone

General Information

*in Banff*

## Body and Bone in Banff

August 3 –7, 2009

### Participating Faculty

#### Course Director

**Sandra L. Moore, M.D.**

Assistant Professor of Radiology

#### NYU Faculty

**Kent P. Friedman, M.D.**

Assistant Professor of Radiology

**Ruth P. Lim, M.D.**

Assistant Professor of Radiology

**Alec J. Megibow, M.D., M.P.H.,  
F.A.C.R.**

Professor of Radiology

Director, Faculty Practice Radiology

#### Guest Faculty

**William B. Morrison, M.D.**

Associate Professor of Radiology

Director, Division of Musculoskeletal

and General Diagnostic Radiology

Thomas Jefferson University Hospital  
Philadelphia, PA

### Target Audience

This course is designed for practicing and clinical radiologists, particularly those who wish to update their learning in PET, Body Imaging and Musculoskeletal Imaging.

### Registration Information

The tuition for this four-day course is USD \$925; \$725 for residents, fellows, NYU alumni, retirees, VA employees and non-U.S. physicians. Online registration is the easiest way to enroll but we encourage you to book your air and hotel reservations first.

### Special Needs

The Post-Graduate Medical School of the New York University School of Medicine, in compliance with the legal requirements of the Americans with Disabilities Act, requests that any participant of this CME course who is in need of accommodation, submit written requests to our office at least one month prior to the course start date.

### Disclosure Statement

The NYU Post-Graduate School adheres to ACCME Essential Areas and Policies, including the Standards for Commercial Support regarding industry support of continuing medical education. In order to resolve any identified Conflicts of Interest, disclosure information is provided during the planning process to ensure resolution of any identified conflicts. Disclosure of faculty and commercial relationships as well as the discussion of off-label or investigational use of any drug, device or procedure by the faculty will be fully noted at the meeting.

### Educational Objectives

- Diagnose musculoskeletal diseases, including marrow disorders.
- Diagnose osteoarthritis before morphological changes take place by using advanced cartilage specific MR sequences that are now available for clinical use including T2 mapping techniques.
- Given emerging technology, describe the value of using dual energy MDCT on all patients as it relates to abdominal imaging.
- Describe patient preparation and performance of a standard cardiac MRI examination, as well as discuss commonly used routine protocols.
- Based on advances in MR imaging criteria and PET imaging, effectively diagnose a broad spectrum of musculoskeletal, cardiac, abdominal and oncologic diseases.
- Apply the imaging techniques that will allow for early diagnoses of small pancreatic cancers that can be surgically treated for a significant survival benefit.
- Incorporate up-to-date imaging protocols and techniques in order to address quality imaging issues in abdominal, cardiac, PET-CT and musculoskeletal imaging.

### Course Description/Statement of Need

This program is designed to demonstrate optimal diagnostic approaches to sports and non-sports related musculoskeletal disorders, based on arthroscopic and radiographic correlations. The course will focus on optimal diagnostic approaches to gastrointestinal disease and how to optimize interpretation of PET-CT images, MRI of cardiovascular disease and gastrointestinal disease. Current topics such as the increasing uses of dual energy MDCT will be covered as they relate to abdominal imaging and all talks will highlight protocols that yield the best images at the lowest possible dose. Quality imaging issues in abdominal, cardiac, PET-CT and musculoskeletal imaging will be addressed by incorporating up-to-date protocols and techniques.

### Accreditation Statement

The NYU Post-Graduate Medical School is accredited by the Accreditation Council for Continuing Medical Education to provide continuing medical education for physicians.

### Credit Designation Statement

The NYU Post-Graduate Medical School designates this educational activity for a maximum of 19 *AMA PRA Category 1 Credits*<sup>™</sup>. Physicians should only claim credits commensurate with the extent of their participation in the activity.

# Body and Bone

## Program Schedule

### Sunday, August 2

4:00–6:00PM

**Registration**

6:00–7:30PM

**Welcome Reception**

### Monday, August 3

7:00AM

**Full American Breakfast Buffet in the Dining Room**  
(included in your package)

7:40AM

**Welcome**

Sandra L. Moore, M.D.

7:45–8:30AM

**Dual Energy MDCT – Applications that Can be Clinically Useful**

Alec J. Megibow, M.D.,  
F.A.C.R., M.P.H.

8:30–9:15AM

**General Intro to PET-CT**

Kent P. Friedman, M.D.

9:15–10:00AM

**MDCT in Pancreatitis**

Alec J. Megibow, M.D.,  
F.A.C.R., M.P.H.

10:00–10:15AM

**Coffee Break**

10:15–11:00AM

**PET-CT: Gynecological Malignancies**

Kent P. Friedman, M.D.

11:00–11:45AM

**MSK Infections**

Sandra L. Moore, M.D.

11:45AM–12:30PM

**MDCT/MRI for Pancreatic Adenocarcinoma**  
Alec J. Megibow, M.D.,  
F.A.C.R., M.P.H.

12:30–12:45PM

**Questions & Discussion**

### Tuesday, August 4

7:00AM

**Full American Breakfast Buffet in the Dining Room**  
(included in your package)

**Optional Session**

7:15–7:45AM

**Musculoskeletal Complications of Diabetes**  
Sandra L. Moore, M.D.

7:45–8:30AM

**MDCT/MRI for Cystic Pancreatic Masses**

Alec J. Megibow, M.D.,  
F.A.C.R., M.P.H.

8:30–9:15AM

**MSK Wrist and Hand**

Sandra L. Moore, M.D.

9:15–10:00AM

**PET-CT and Melanoma**

Kent P. Friedman, M.D.

10:00–10:15AM

**Break**

10:15–11:00AM

**Pearls and Pitfalls of PET-CT**

Kent P. Friedman, M.D.

11:00–11:45AM

**MDCT Enterography: 3 Years' Experience**

Alec J. Megibow, M.D.,  
F.A.C.R., M.P.H.

11:45AM–12:30PM

**PET-CT and MSK**

Kent P. Friedman and  
Sandra L. Moore, M.D.

12:30–12:45PM

**Questions & Discussion**

### Wednesday, August 5

**Free Day**

### Thursday, August 6

7:00AM

**Full American Breakfast Buffet in the Dining Room**  
(included in your package)

7:45–8:30AM

**Marrow**

Sandra L. Moore, M.D.

8:30–9:15AM

**Coronary CTA: The Basics**

Ruth P. Lim, M.D.

9:15–10:00AM

**MRI of Hip Labrum**

William B. Morrison, M.D.

10:00–10:15AM

**Coffee Break**

10:15–11:00AM

**MRI of Shoulder Instability/Labrum**

William B. Morrison, M.D.

11:00–11:45AM

**MRI of the Female Pelvis**

Ruth P. Lim, M.D.

11:45AM–12:30PM

**Optimizing Protocols for MSK**

William B. Morrison, M.D.

12:30–12:45PM

**Questions & Discussion**

### Friday, August 7

7:00AM

**Full American Breakfast Buffet in the Dining Room**  
(included in your package)

**Optional Session**

7:15–7:45AM

**The Future of MSK Imaging**

Sandra L. Moore, M.D. and  
William B. Morrison, M.D.

7:45–8:30AM

**Cartilage Imaging**

William B. Morrison, M.D.

8:30–9:15AM

**Liver MR: A Case**

**Based Approach**

Ruth P. Lim, M.D.

9:15–10:00AM

**Post-Op –**

**Upper Extremity**

William B. Morrison, M.D.

10:00–10:15AM

**Break**

10:15–11:00AM

**Peripheral MRA**

**and NSF Update**

Ruth P. Lim, M.D.

11:00–11:45AM

**Interesting**

**Musculoskeletal Cases**

William B. Morrison, M.D.

11:45AM–12:30PM

**Interesting Body Cases**

Ruth P. Lim, M.D.

12:30–12:45PM

**Questions & Discussion**

12:45–1:00PM

**Program Evaluation**

**and Adjournment**

**Acknowledgement Statement**

*The organizers gratefully acknowledge the educational support received from the following organizations:*

- Bayer HealthCare Pharmaceuticals
- Siemens Medical Solutions



### Hotel And Air Travel Arrangements

Travel Planners, Inc. is the appointed Travel Coordinator for this meeting.

Guests arriving by air fly into Calgary International Airport (YYC), which is located approximately 80 miles (130 km) east of the resort. Most major airline carriers fly into Calgary.

You may book your flight on your own or with Travel Planners, Inc. (TPI), but all hotel reservations must be made through TPI. The reservation form can be found on page 10, or you can reserve online at <https://www.tpires.com/NYUC/form.htm>

### Banff National Park, Canada

Located in the Canadian Rockies, Banff National Park, is Canada's first national park. Spanning miles of valleys, mountains, glaciers, forests, meadows and rivers, the park is one of the world's premier destination spots. It is a hiking wonderland, containing miles of trails, and home to a number of outstanding geological and ecological features. Each eco-region of the park is characterized by a different plant and animal regime, as well as a different climate and elevation.

### Fairmont Banff Springs Resort, Canada

Since 1888, the Fairmont Banff Springs Resort has stood as a proud statement to the grandeur of the Canadian Rockies. Originally built as a railway hotel to accommodate adventurous travelers crossing the Rockies, this classic hotel continues its tradition of exemplary service and warm hospitality into a new century. Majestic and sublime, this legendary baronial castle offers accommodations as spectacular as the mountains themselves.

The resort offers 12 restaurants and lounges ranging from casual to formal. There are 16 shops/boutiques, a newly renovated Willow Stream Health Club & Spa, 27 holes of golf, 5 tennis courts, a bowling alley, hot springs, mountain walks, hiking, canoeing, cycling, fishing, horseback riding, and rafting. All rooms feature impressive valley views or dramatic mountain vistas. There is a bus service operating between The Fairmont Banff Springs Resort and the northern end of town along Banff Avenue with a fare of \$2.00 CAD per person each way.

### Post Extension

**Fairmont Lake Louise** – Surrounded with snow-frosted Rocky Mountain peaks, secluded next to a legendary lake, and showcased by a majestic glacier, The Fairmont Lake Louise is a haven of inviting splendor.

TPI has secured discounted rates for NYU attendees who wish to extend their stay and experience the beauty and grandeur of Lake Louise. Please indicate on your reservation form if you are interested in this extension and information will be forwarded to you.

Accommodations are based upon availability at the time of request.

The following special room rates have been confirmed for NYU attendees and guests and are available only through TPI. Rates include Full American breakfast daily and service charges covering portage, housekeeping, group services, and breakfast wait staff gratuities.

Category	NYU Rate Canadian \$ Sgl/DbI	Public Rate Canadian \$ Sgl/DbI
Fairmont	\$456/\$498	\$550/\$589
Deluxe Premier	\$576/\$618	\$610/\$649
Junior Suite	\$636/\$678	\$700/\$739
Executive Suite	\$656/\$698	\$750/\$789

**Fairmont rooms** are located throughout the resort with a mountain view and have either one king, one queen, or two twin beds.

**Deluxe Premier rooms** are located throughout the resort with a mountain view and have either one king, one queen, or two twins, two queens, or one queen plus one twin bed.

**Junior Suites** are located in the Main Building with stunning views of the Bow Valley. They have a defined bedroom with one king bed plus a large living area with a double sofa bed.

**Executive Suites** are located exclusively in the Stanley Thompson wing with resort-side views, a separate bedroom with either one king or two queen beds, and a parlor with seating area, desk, flat screen TV and fireplace.

\*Additional room and suite types (Deluxe, Signature, One Bedroom Suites) may be obtained at group rates, subject to availability upon request.

The above rates are guaranteed in Canadian dollars and are subject to taxes (currently: 2% Tourism Improvement Fee; 4% Alberta Tourism Levy, and 5% Federal Goods & Services Tax – GST). The rate of exchange is currently **\$1 CAD = \$.80 USD at press time, subject to change**. Rates are effective for arrival on Saturday, August 1, to departure on Saturday, August 7, 2009. Extended stays are based upon availability. Children, when sharing room with parents: 13-17 years—\$52 plus tax per child per day; 6-12 years—\$26 plus tax per child per day; 5 and under—no charge. Third/Fourth adult in room—\$52 plus tax per person, per night. Maximum of four (4) persons per room. Credit cards are required to guarantee reservations. The hotel will charge a one night deposit to the card approximately 30 days prior to arrival.

### Airport Shuttle:

Shuttle service is available and reservations are required. Details will accompany your hotel confirmation from TPI.

### Deadline for Reservations and Final Payment

June 20th, 2009

### Documentation

All U.S. Citizens, including children, must carry a valid passport. Citizens of other countries should check with their nearest consulate for entry requirements.

# Body and Bone

## Hotel Reservation Form

NYU Department of Radiology

### Body and Bone *in Banff*

August 3-7, 2009

Book Online at <https://www.tpires.com/NYUC/form.htm>

#### Or return this form to:

##### Travel Planners, Inc.

1919 NW Loop 410, Suite 210,  
San Antonio, TX 78213  
Phone: 1-800-531-7201  
Fax 212-341-5252  
email: [nyu@tpires.com](mailto:nyu@tpires.com)

#### Discounted Airline Transportation

Save travel dollars to Calgary on American Airlines. TPI discounted fares are NOT available by calling the airlines or through a retail travel agent. If you prefer, TPI will be pleased to book your travel on another airline. Seats are limited and early bookings are recommended. An air itinerary, fare (including a \$35 per ticket service fee) and booking policies will be faxed for approval prior to ticketing. Benefits include: \$200,000 free flight insurance, frequent flyer enrollment and upgrades processed at no charge, and advance seat assignments. Call 800-810-2695 and ask for an NYU air representative to make reservations.

Rental Cars: Car rental reservations can be made in conjunction with your air reservations. A service fee of \$20 will apply for car rental reservations not in conjunction with air reservations.

#### Changes/Cancellations

\$35 per change

#### Hotels

\$50 at any time. After June 20, 2009 – plus one night's room charge.

#### Tours

After June 20, 2009 – no refund.

(All activity prices are in US dollars and are subject to change without notice should there be a fluctuation in the rate of exchange.)

The activities listed have been arranged by TPI on an exclusive basis for NYU attendees so as not to conflict with the meeting agenda. TPI reserves the right to cancel or re-price any tours that do not meet the minimum requirements. Advance registration required for activities prior to June 20th, 2009. There is no guarantee that you can sign up on-site for these activities.

### Deadline for Reservations and Payment: June 20th, 2009

**IMPORTANT:** Name(s) below must match those on documentation or airlines will deny boarding.

Last Name	First
Spouse/Guest	
Child(ren)	Age
Child(ren)	Age
Mailing Address	<input type="radio"/> Home <input type="radio"/> Office
City/State/Zip	
Home Phone ( )	Business Phone ( )
Fax ( )	

#### Hotel Reservations: Fairmont Banff Springs

Category Choice	Number of Rooms
<input type="checkbox"/> Fairmont	#___ @CAD \$456 sgl / \$498 dbl
<input type="checkbox"/> Deluxe Premier	#___ @CAD \$576 sgl / \$618 dbl
<input type="checkbox"/> Junior Suite	#___ @CAD \$636 sgl / \$678 dbl
<input type="checkbox"/> Executive Suite	#___ @CAD \$656 sgl / \$698 dbl

Arrival Date      Departure Date      # Persons in room

Special Requests

*If you have special needs, please attach a separate letter.*

#### Post Extension: Fairmont Lake Louise

Please send me information on rates for this extension

Arrival Date      Departure Date      # Persons in room

#### AIRLINE RESERVATIONS

Arrange air transportation from (city)

to arrive Calgary on (date)

and return on (date)

Airline Preference (if any)

Frequent Flyer #      Seating Preference:  Window  Aisle

### ACITIVITES

Full description of activities can be found on the NYU website at [www.med.nyu.edu/courses/cme/banff09](http://www.med.nyu.edu/courses/cme/banff09)

**MONDAY Welcome to Banff Sightseeing Tour** (min. 20 people)  
#\_\_\_ @\$105 per adult #\_\_\_ @\$87 per child 6-15 (under 6 free)

**TUESDAY Whitewater Rafting—Kananaskis River** (min. 20 people)  
#\_\_\_ @\$154 per adult #\_\_\_ @\$139 per child age 5-15

**TUESDAY Whitewater Rafting—Horseshoe Canyon** (min. 20 people)  
#\_\_\_ @\$157 per adult #\_\_\_ @\$148 per child age 10-15

**WEDNESDAY Icefield Tour (with lunch)** (min. 20 people)  
#\_\_\_ @\$190 per adult #\_\_\_ @\$166 per child age 10-15 under 6 FREE

**WEDNESDAY Mountain Lakes and Waterfalls (with lunch)** (min. 20 people)  
#\_\_\_ @\$166 per person

**THURSDAY Sundance Trail Ride** (minimum 15)  
#\_\_\_ @\$130 per person

TOTAL OF ACTIVITIES: \$\_\_\_\_\_

#### PAYMENT METHOD:

- Check in U.S. Dollars (payable to Travel Planners Inc)
- Credit Card (see top half of this form)

NYU Department of Radiology

### Body and Bone *in Banff*

August 3-7, 2009

#### Participant Information (please print clearly)

Name: \_\_\_\_\_

Address: \_\_\_\_\_

City: \_\_\_\_\_ State: \_\_\_\_\_ Zip: \_\_\_\_\_

Daytime Phone: \_\_\_\_\_

Fax: \_\_\_\_\_

Email: \_\_\_\_\_

Degree: \_\_\_\_\_

Specialty: \_\_\_\_\_

Sub-Specialty: \_\_\_\_\_

Dietary Restrictions: \_\_\_\_\_

#### Payment Method

**Check in U.S. Dollars** payable to NYU Department of Radiology

**Credit Card**

Cardmember's Name (print carefully): \_\_\_\_\_

Card #: \_\_\_\_\_

Amount to be Charged: \$ \_\_\_\_\_

Bill to:  Visa  MasterCard  American Express

Exp Date: (MM/YYYY) \_\_\_\_\_ / \_\_\_\_\_

Signature (required to process): \_\_\_\_\_

#### Registration Fees

**Full Fees (Physicians)**      **Discounted Fees** (see below for qualifications)

\$925

\$750 discounted fee\*

\*Discounted Fees apply to: NYU School of Medicine alumni, M.D.'s employed by the Department of Veterans Affairs, full-time active military personnel, technologists, retired physicians, current residents/fellows and non-U.S. physicians.

Reason for discount: \_\_\_\_\_

**Email Confirmations:** If you provide your email, we will send you an email confirmation. We no longer send out written or faxed confirmation/receipts.

**Refund Policy:** If you need to cancel, you will need to send written notification 30 or more days in advance (subject to a \$75 service fee). Refunds will be possible after this date subject to a \$150 service fee.

**Course Cancellation Policy:** In the unusual circumstance that this course is cancelled, two weeks' notice will be provided and full tuition refunded. The NYU Post-Graduate Medical School is not responsible for any airfare, hotel or other costs incurred.

#### Educational Needs

If there is a specific question or topic relating to this course, please submit it on the registration form or on the website when registering online.

You may register for this meeting online at [www.med.nyu.edu/courses/cme/banff09](http://www.med.nyu.edu/courses/cme/banff09)

#### In Case of Questions:

Contact:

Michelle R. Koplik (212) 263-3936 or

Marisa P. Bruno (212) 263-0724

#### Where to Fax or Mail:

Marisa P. Bruno

NYU Langone Medical Center

560 1st Avenue, HW-231

New York, NY 10016

Fax: (212) 263-3959

2009

March 23-27

Clinical Imaging Essentials  
*Deer Valley, Utah*

April 24-25

Virtual Colonoscopy Workshop  
*The Raleigh Hotel, South Beach, Florida*

May 14-16

6th Annual Sports Medicine Imaging Conference  
*New York, NY*

June 29-July 3

Summer Radiology Symposium in Chatham  
*Chatham Bars Inn, Chatham, Cape Cod*

Aug. 3-7

Body and Bone in Banff  
*Fairmont Banff Springs, Banff, Canada*

Fall

MRJ: Clinical State-of-the-Art  
*New York, NY*

Fall

Virtual Colonoscopy Workshop  
*New York, NY*

Oct. 19-23

NYU Imaging Update  
*Four Seasons, Santa Barbara*

Dec. 14-19

28th Annual Head to Toe Imaging  
*Hilton Hotel, New York, NY*

2010

Jan. 25-29

Imaging Symposium in Maui  
*Four Seasons, Maui*

Dec. 13-18

29th Annual Head to Toe Imaging  
*Hilton Hotel, New York, NY*

2011

Jan. 3-7

Essentials of Imaging in Nevis  
*Four Seasons, Nevis*

July Tentative

NYU Radiology Practicum in Iceland  
*Reykjavik, Iceland*

**For more information, contact:**

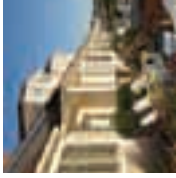
**Michelle R. Koplik**  
Director of CME Education and  
Corporate Relations  
NYU Langone Medical Center  
560 1st Avenue (HW-231)  
New York, NY 10016  
Telephone: (212) 263-3936  
E-mail: [Michelle.Koplik@nyumc.org](mailto:Michelle.Koplik@nyumc.org)

**Marisa P. Bruno**  
Program Coordinator  
NYU Langone Medical Center  
560 1st Avenue (HW-231)  
New York, NY 10016  
Telephone: (212) 263-0724  
E-mail: [Marisa.Bruno@nyumc.org](mailto:Marisa.Bruno@nyumc.org)



Langone Medical Center

Non Profit Organization  
US Postage  
**PAID**  
New York University



**Summer Radiology  
Symposium**  
*On the Cape*

**JUNE 29-JULY 3, 2009**

Chatham Bars Inn  
**CHATHAM, CAPE COD**



**Body and Bone**  
*in Banff*

**AUGUST 3-7, 2009**

The Fairmont Banff Springs  
**BANFF, CANADA**