

Neuroradiology in Nantucket

General Information

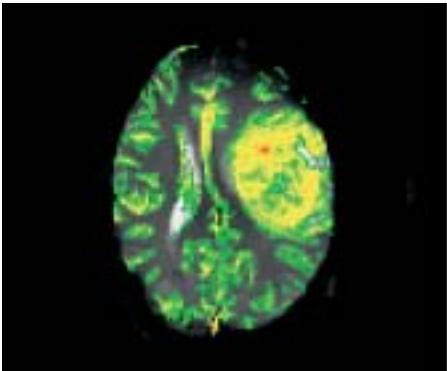
September 10–13, 2003

Target Audience

This course is intended for radiologists interested in neuroradiology; neurologists or neurosurgeons may also find this course to be of benefit to them.

Course Description

This four-day course (Wednesday–Saturday) is designed to provide a comprehensive review of all aspects of neuroradiology and to introduce the latest advances in neuroimaging. The format will consist of didactic lectures and interesting case reviews by the Neuroradiology faculty of the NYU Medical Center. Topics of discussion will include various disorders of the brain, spine, head & neck and neurointerventional techniques. It is the intent of the organizers to provide practical clinical material to the audience with ample opportunity for discussion and interchange of ideas. Please join us on the beautiful island of Nantucket for an update in neuroradiology.



Educational Objectives

Upon completion of this course, participants will be able to:

- Discuss the indications and roles for CT and MR imaging studies in the evaluation of neoplasms and infectious/inflammatory disorders of the CNS and head and neck
- Utilize new strategies/pulse sequences in MR and CT imaging in assessing diseases of the brain, spine, head and neck and intracranial vasculature
- Understand the evolving roles of MR, MRA, CTA and conventional catheter



angiography in the diagnosis of stroke, aneurysms and arteriovenous malformations

Accreditation

The NYU Post-Graduate Medical School is accredited by the Accreditation Council for Continuing Medical Education (ACCME) to sponsor continuing medical education for physicians.

The NYU Post-Graduate Medical School designates this continuing medical education activity for 19.5 credit hours in Category 1 of the Physicians Recognition Award of the American Medical Association.

19.5 hours in Category 1

Disclosure Statement

The NYU Post-Graduate Medical School adheres to ACCME standards regarding industry support of continuing medical education. Disclosure of any commercial relationships as well as discussion of off label or investigational use of any drug, device or procedure by the faculty, will be made known at the symposium.

Registration Information

Registration fees are \$750 per attendee (\$595 reduced fee for physicians in training, NYU School of Medicine alumni, former residents and fellows, M.D.'s employed by

the Department of V.A. Medical Center, full-time active military personnel, nurses, technologists, and other non-M.D. health-care professionals.) Fees include course materials, coffee breaks and a Welcome Reception for the entire family on Wednesday evening.

Please register on-line by going to www.radcme.med.nyu.edu and log onto courses and then to Neuroradiology in Nantucket. It is very easy and you will receive an automatic confirmation/receipt if you provide your email address. If you are required to pay by check, please print out the on-line registration form and complete the information and mail it to: Carmen Escobar, NYU Medical Center, 560 1st Avenue, TCH-Room 390, New York, NY 10016-4998. In case of questions, please call (212) 263-3936.

Cancellation Policy

Cancellations must be made in writing prior to August 20, 2003 subject to a \$75 administrative charge. Cancellations necessary after this date are subject to a \$150 service charge.

SCHOOL OF
MEDICINE



NEW YORK UNIVERSITY

Wednesday, September 10, 2003

7:00– *Registration and Coffee*
8:00 a.m. (Breakfast is part of your hotel package)

Moderator: Annette O. Nusbaum, M.D.

8:00 a.m. **Welcome and Introduction**
Annette O. Nusbaum, M.D.
Course Director

8:15 a.m. **HEAD AND NECK ANATOMY**
Annette O. Nusbaum, M.D.

9:00 a.m. **IMAGING OF HEAD AND NECK CANCER**
Deborah R. Shatzkes, M.D.

9:45 a.m. **CNS INFECTIONS**
Edmond A. Knopp, M.D.

10:30 a.m. *Questions and Discussion*

10:45 a.m. *Coffee Break*

11:00 a.m. **ORBITAL IMAGING**
Deborah R. Shatzkes, M.D.

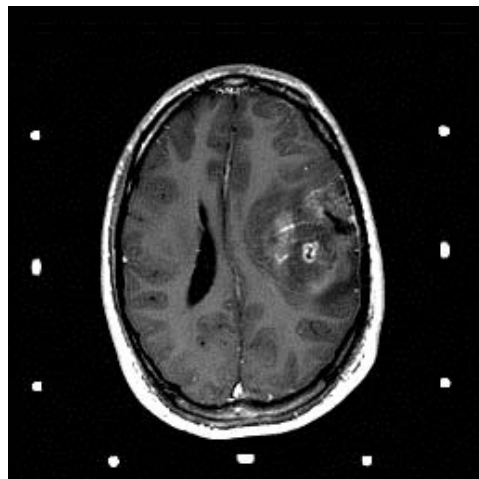
11:45 a.m. **DIFFUSION IMAGING IN STROKE AND BEYOND**
Edmond A. Knopp, M.D.

12:30 p.m. **INTERESTING CASES: BRAIN**
Edmond A. Knopp, M.D.

1:00 p.m. *Questions and Discussion*

Afternoon *Optional Historic Nantucket Walking Tours*

6:00 p.m. *Welcome Reception for Registrants, Faculty and Guests*
(Light Hors D'Oeuvres & Cocktails)
(Harbor House Hotel)



Thursday, September 11, 2003

7:00 a.m. *Coffee* (Breakfast is part of your hotel package)

Moderator: Edmond A. Knopp, M.D.

7:45 a.m. **BRAIN TUMORS AND PERFUSION IMAGING**
Edmond A. Knopp, M.D.

8:30 a.m. **IMAGING AND INTERVENTION OF CEREBRAL ANEURYSMS**
Peter Kim Nelson, M.D.

9:15 a.m. **CLINICAL MR SPECTROSCOPY**
Edmond A. Knopp, M.D.

10:00 a.m. *Questions and Discussion*

10:15 a.m. *Coffee Break*

10:30 a.m. **IMAGING OF THE POSTERIOR FOSSA**
Deborah R. Shatzkes, M.D.

11:15 a.m. **IMAGING THE TEMPORAL BONE**
Annette O. Nusbaum, M.D.

12:00 p.m. **INTERESTING CASES: BRAIN AND SPINE**
Bidyut K. Pramanik, M.D.

12:30 p.m. *Questions and Discussion*

Friday, September 12, 2003

7:00 a.m. *Coffee* (Breakfast is part of your hotel package)

Moderator: Bidyut K. Pramanik, M.D.

7:45 a.m. **WHITE MATTER DISEASES**
Robert I. Grossman, M.D.

8:30 a.m. **IMAGING THE SEIZURE PATIENT**
Annette O. Nusbaum, M.D.

9:15 a.m. **CTA/MRA OF THE CAROTIDS**
Bidyut K. Pramanik, M.D.

10:00 a.m. *Questions and Discussion*

10:15 a.m. *Coffee Break*

10:30 a.m. **BASE OF SKULL AND SELLA**
Robert I. Grossman, M.D.

11:15 a.m. **IMAGING AND INTERVENTION OF CEREBRAL ARTERIOVENOUS MALFORMATIONS**
Peter Kim Nelson, M.D.

12:00 p.m. **INTERESTING HEAD AND NECK CASES**
Deborah R. Shatzkes, M.D.

12:30 p.m. *Questions and Discussion*

7:00–
9:00 p.m. *Optional Lobster Bake*
Enjoy a traditional lobster bake with others from our group at the Harbor House Hotel

Course Director

Annette O. Nusbaum, M.D.

NYU Faculty

Robert I. Grossman, M.D.

Louis Marx Professor and Chairman
Department of Radiology

Edmond A. Knopp, M.D.

Associate Professor of Radiology and
Neurosurgery
Section Chief, Neuroradiology

Peter Kim Nelson, M.D.

Associate Professor of Radiology and
Neurosurgery
Section Chief, Interventional Neuroradiology

Annette O. Nusbaum, M.D.

Assistant Professor of Radiology

Bidyut K. Pramanik, M.D.

Assistant Professor of Radiology

Deborah R. Shatzkes, M.D.

Assistant Professor of Radiology

Saturday, September 13, 2003

7:00 a.m. *Coffee* (Breakfast is part of your hotel package)

Moderator: Deborah R. Shatzkes, M.D.

7:45 a.m. **DEGENERATIVE SPINE DISORDERS-**
Bidyut K. Pramanik, M.D.

8:30 a.m. **PARANASAL SINUS IMAGING**
Deborah R. Shatzkes, M.D.

9:15 a.m. **PEDIATRIC CNS DISORDERS**
Annette O. Nusbaum, M.D.

10:00 a.m. *Questions and Discussion*

10:15 a.m. *Coffee Break*

10:30 a.m. **NONDEGENERATIVE SPINE DISORDERS**
Bidyut K. Pramanik, M.D.

11:15 a.m. **INTERESTING CASES: BRAIN/HEAD AND NECK**
Annette O. Nusbaum, M.D.

12:00 p.m. *Questions and Discussion*

12:15 p.m. *Program Evaluation and Adjournment*

Neuroradiology in Nantucket

Hotel Information and Setting

Setting – Nantucket Island

Located approximately 30 miles off the coast of Cape Cod, Nantucket is an Atlantic gem where visitors flock to enjoy the beautiful beaches, numerous biking paths, elegant shoppes along cobblestoned streets, and exquisite cuisine.

White Elephant Resort and Harbor House Village

Our meeting site is the Harbor House Village located right in the quaint town of Nantucket. In addition to a room block at the Harbor House, the organizers have also secured a small block of rooms at the White Elephant Resort, restored a few years ago and magnificent. The White Elephant is only a 5-7 minute walk from the Harbor House and perhaps would not be as appropriate with children, but it is a lovely and more upscale property on the water.

Harbor House Village (www.harborhousevillage.com)

Following an extensive restoration, the Harbor House some of you may remember on Nantucket has become Harbor House Village with 104 guest rooms, the Living Room (lobby), Hearth Bar, and restaurant and now including air conditioning throughout. The Village is a charming group of buildings each with its own unique appeal with rooms featuring excellent amenities. Its location in town is very convenient for restaurants and shoppes. Its management is the same as the White Elephant Resort, described below, and guests are extended a warm welcome.

White Elephant Resort (limited room block) (www.whiteelephanthotel.com)

Nestled at the water's edge, the White Elephant is quiet and serene yet only a 10-minute walk into town. It is a 5-minute stroll to the Harbor House Village where our meetings will take place. In 1999, the owners of the Wauwinet acquired the White Elephant and have transformed it into an upscale hotel with world-class cuisine, exemplary service and a stunning location. Due to its small size, we were able to reserve a small block at the White Elephant. Although it does not offer a pool, its furnishings, amenities and service are worth the pricetag.

Reservations and Rates

Rates at the Harbor House are \$295 per night and rates at the White Elephant are \$395 per night plus the appropriate taxes. These rates include breakfast for two persons. Please reserve your room as far in advance as possible but no later than July 25, 2003 by completing the Hotel Reservation Form found at the back of this brochure and faxing it as instructed concerning deposits.

Group Activities

- **Welcome Reception** on Wednesday evening at the Harbor House for registrants, faculty and guests (children welcome)
- **Optional Historic Walking Tour of Nantucket** on Wednesday
- **Optional Lobster Bake** at the Harbor House (for the entire family) on Friday

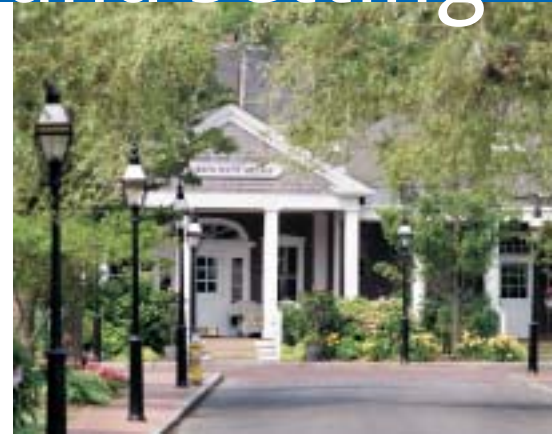
Otherwise, we will leave you to enjoy the island and all it has to offer. We are sure you will want to pack your bike or rent one to enjoy the miles and miles of biking paths leading you to remote beaches, the idyllic town of Sconset; you will enjoy the shoppes and historic homes found in Nantucket; and September is typically a perfect weather month to enjoy the island without the summer crowds!



White Elephant Resort

How to Reach Nantucket

Nantucket has become more and more accessible over the years with plenty of fast 45-minute to 60-minute hydrofoils from Hyannis on Cape Cod. The "slow boat" you may have used in the past is still available (2½ hours) if you want to relax and wind-down before arrival. Reservations are



Harbor House Village

required (many months in advance) for cars but please note that it is less important to have a car on Nantucket than it is on Martha's Vineyard; it is smaller and has only one main town.

Of course, you can always fly directly into Nantucket with flights available from New York, Providence and Boston.

Once on the island, you certainly do not need a car as the majority of the restaurants and shoppes are right in town, walkable from either hotel. Island tours are possible and a trolley transports you to the beaches, though we think you will enjoy the chance to bicycle or walk most places!

We have made arrangements for travel with Premier Travel. Please call Bernice at 1-800-545-1910, Ext 413. She can explore the various options with you.

Helpful websites to assist you with your plans:

- www.NantucketOnline.com
Boat and airline schedules and other helpful information.
- www.hy-linecruises.com
High-speed ferry.
- www.islandferry.com
Steamship Authority – Passenger & car service. Also ask about the Flying Cloud, a one-hour ferry service also provided by Steamship Authority.
- www.NantucketOnline.com/services/affordablerentals

SCHOOL OF
MEDICINE



NEW YORK UNIVERSITY

Neuroradiology in Nantucket Hotel Reservation Form

Group Name: NYU Medical Center–Neuroradiology on Nantucket

September 9–14, 2003

Fax to: 508-228-7639

Please complete this form and mail or fax it directly to reservations.

Room Requests

All room types are available on a first come/first serve basis; please check your preference. Room Rate per night: See below, plus 9.7% room tax per night

Room Request: Harbor House Village: \$295.00

Additional person per room, per night: \$28.00, Children under 12: \$15.00

Queen-size bed King-size bed Two Queen-size beds

Room Request: White Elephant: \$395.00

King Bed

In order to secure these special rates, reservations must be made no later than July 25, 2003. Rates include breakfast for two persons at each hotel.

Deposit and Cancellation Policy:

To guarantee a reservation full prepayment of the total room charge is required at the time of booking. The balance of the room charges (if applicable), taxes and incidental charges are payable at the time of check out. All reservations are refundable up until **21 days** prior to your scheduled arrival date, less a \$25 processing fee. Within **21 days** of your scheduled arrival date, your entire reservation is non-refundable if the reservation is changed or cancelled. If you choose not to honor your reservation, arrive after your scheduled arrival date or leave prior to your scheduled date, the deposit is forfeited.

Mail or Fax to:

Reservations Office
Harbor House Village
South Beach Street
P.O. Box 1139
Nantucket, MA 02554

Fax 508-228-7639 Attention: Reservations

In Case of Questions:

Call 1-800-445-6574 (White Elephant)

Call 1-800-____-____ (Harbor House Village)

Guest Information

Please complete the following information:

Name _____

of Adults ____ # of Children (include ages) _____

Date and method of Arrival _____ Time _____

Date and method of Departure _____

Mailing Address _____

City _____

State _____

Country _____ Zip/Postal Code _____

Telephone (including Country Code) _____

Fax _____

Credit Card Information

Name on Credit Card _____

Card Number _____

Expiration Date _____

Authorized Signature: _____

**Once we are able to confirm this reservation for you, you will receive a confirmation letter shortly thereafter.

