

# Summer Radiology Symposium

*at The Sagamore  
on Lake George*

June 27–July 1, 2011  
Boltin Landing, New York



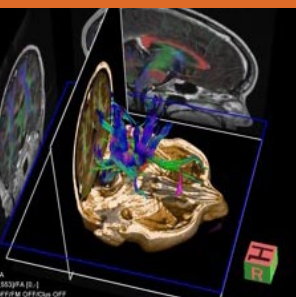
Langone Medical Center  
Department of Radiology

Sponsored by the NYU Post-Graduate Medical School

# Clinical Imaging Symposium

*at the La Posada de  
Santa Fe Resort & Spa*

August 1–5, 2011  
Santa Fe, New Mexico



## NYU Course Director

**Jane P. Ko, M.D.**

Associate Professor of Radiology

## NYU Faculty

**Jenny T. Bencardino, M.D.**

Associate Professor of Radiology

**Genevieve L. Bennett, M.D.**

Assistant Professor of Radiology

**John Loh, M.D.**

Assistant Professor of Radiology

**Sarah Sarvis Milla, M.D.**

Assistant Professor of Radiology

## Target Audience

This course is designed for clinical radiologists in academic or private practice.

## Statement of Need/ Course Description

This course is designed to demonstrate how to accurately identify imaging findings that narrow the differential diagnosis of the chest, abdomen, brain and musculoskeletal system for optimal patient care. Maintenance of certification requires continued review of essential imaging techniques in all areas of radiology.

While addressing up-to-date imaging protocols, this course will cover topics including: pediatric abdominal trauma, pulmonary embolus, female pelvic MRI, MRI of the hip & knee, brain tumors and stroke. Participants will become familiar with the latest MR imaging techniques, dose conserving methods for CT and the current role of ultrasound and MRI as an alternative to CT in the evaluation of various conditions. Up-to-date neuro imaging techniques (CTA, CT perfusion, MR diffusion, and MR perfusion) will be reviewed, as well as recent protocol changes in the imaging of pediatric seizure patients.

## Learning Objectives

- Using the latest imaging techniques, determine the most effective imaging to differentiate among the broad spectrum of peri-articular tendon and muscle injuries in the hip in patients who present with chronic or acute hip pain.
- Establish appropriate imaging algorithms for the evaluation of various disorders that cause abdominal and pelvic pain in the pregnant patient and to more safely and effectively diagnose these disorders.

- Discuss dose-reduction techniques for CT angiogram studies of the pulmonary arterial system and aorta.
- Discuss the application of up-to-date imaging techniques (CTA, CT perfusion, MR diffusion, and MR perfusion) in the workup of strokes, demyelinating disease, and brain tumors.
- Integrate new techniques into imaging evaluation of pediatric patients with seizures and review pathologic processes in order to improve interpretation.

## Accreditation Statement

The NYU Post-Graduate Medical School is accredited by the Accreditation Council for Continuing Medical Education to provide continuing medical education for physicians.

## Credit Designation

The NYU Post-Graduate Medical School designates this educational activity for a maximum of 19 AMA PRA Category 1 Credits™. Physicians should claim only the credit commensurate with the extent of their participation in the activity.

## Disclosure Statement

The NYU Post-Graduate Medical School adheres to ACCME Essential Areas and Policies, including the Standards for Commercial Support regarding industry support of continuing medical education. In order to resolve any identified conflicts of interest, disclosure information is provided during the planning process to ensure resolution of any identified conflicts. Disclosure of faculty and commercial relationships as well as the discussion of unlabeled or unapproved use of any drug, device or procedure by the

## Special Needs

The Post-Graduate Medical School of the New York University School of Medicine, in compliance with the legal requirements of the Americans with Disabilities Act, requests any participant of this CME course who is in need of accommodation to submit written requests to our office at least one month prior to the course date.

## Meeting Registration

Online registration is fast and easy. Go to [www.radcme.med.nyu.edu](http://www.radcme.med.nyu.edu) to register or download the registration form.

## Questions

Please call us at 212-263-0724 with any questions about the meeting.

## Meeting Schedule

### Sunday, June 26th

4:00 – 6:00 pm Registration

### Monday, June 27th

7:15 am Registration and Breakfast  
7:55 am Welcome  
8:00 am Approach to Pulmonary Nodules  
Jane P. Ko, M.D.  
8:45 am Ectopic Pregnancy:  
Challenges and Pitfalls  
Genevieve L. Bennett, M.D.  
9:30 am HRCT Basics  
Jane P. Ko, M.D.  
10:15 am Coffee Break  
10:30 am Female Pelvic MRI:  
How, When, Why  
Genevieve L. Bennett, M.D.  
11:15 am MRI Evaluation of Seizures in Children  
Sarah Sarvis Milla, M.D.  
12:00 pm Women's Imaging Interesting Cases  
Genevieve L. Bennett, M.D.  
12:45 pm Questions  
1:00 pm Adjourn  
6:00 pm–7:00 pm Welcome Reception

### Tuesday, June 28th

7:30 am Breakfast  
8:00 am Imaging Evaluation of the Pregnant  
Patient with Abdominal Pain  
Genevieve L. Bennett, M.D.  
8:45 am Fetal MRI  
Sarah Sarvis Milla, M.D.  
9:30 am Pulmonary Embolus  
Jane P. Ko, M.D.  
10:15 am Coffee Break  
10:30 am Stroke  
John Loh, M.D.  
11:15 am MDCT of the Female Pelvis:  
Making a More Specific Diagnosis  
Genevieve L. Bennett, M.D.  
12:00 pm Neuroradiology Interesting Cases  
John Loh, M.D.  
12:45 pm Questions  
1:00 pm Adjourn

### Wednesday, June 29th

**FREE DAY**

### Thursday, June 30th

7:30 am Breakfast  
8:00 am Head Trauma  
John Loh, M.D.  
8:45 am Pediatric Abdominal Trauma  
Sarah Sarvis Milla, M.D.  
9:30 am Image Optimization in  
Musculoskeletal MRI  
Jenny T. Bencardino, M.D.  
10:15 am Coffee Break  
10:30 am MRI of Knee Menisci  
Jenny T. Bencardino, M.D.  
11:15 am Head, Hip, Spine Neonatal Ultrasound  
Sarah Sarvis Milla, M.D.  
12:00 pm Musculoskeletal Interesting Cases  
Jenny T. Bencardino, M.D.  
12:45 pm Questions  
1:00 pm Adjourn

### Friday, July 1st

7:30 am Breakfast  
8:00 am MRI of Glenohumeral Instability  
Jenny T. Bencardino, M.D.  
8:45 am Brain Tumors  
John Loh, M.D.  
9:30 am MRI of the Hip: Muscles and Tendons  
Jenny T. Bencardino, M.D.  
10:15 am Coffee Break  
10:30 am **SAM: Essentials of Imaging Acute and  
Post-Operative Thoracic Aortic Disease**  
Jane P. Ko, M.D.  
11:15 am **SAM Continued:  
Essentials of Imaging Acute and  
Post-Operative Thoracic Aortic Disease**  
Jane P. Ko, M.D.  
12:00 pm Demyelinating Disease  
John Loh, M.D.  
12:45 pm Questions  
1:00 pm Adjourn

**SAM (Self Assessment Module) — Earn 1 SAM Credit!**

*Pending approval from the ABR*

You may register for this meeting Online or by completing the registration form on our website and faxing to 212-263-3959

<http://www.med.nyu.edu/courses/cme/sag11>

## Hotel Information

### The Unspoiled Adirondacks

The Sagamore, located in the heart of the Adirondacks, is an island resort on Lake George anchored in Bolton Landing, New York. Located 60 miles north of Albany via Interstate 87, The Sagamore is a leisurely drive from most Mid-Atlantic, New England, Quebec and Ontario Province metropolitan areas, and is just a four-hour drive from New York City or Boston. From outdoor adventure to peaceful solitude, you will find it here in the Adirondacks. With more than 20 beautiful lakes, countless outdoor activities and dozens of exciting attractions, the Lake George area is the perfect vacationer's paradise.

### Getting to the Sagamore Resort on Lake George

**This upstate New York destination resort is easily accessible.**

The Sagamore is located on Lake George and is accessible by air to Albany International Airport, by Amtrak from New York and Montreal, and by automobile via Interstate 87 (the Northway). The Sagamore Resort is within a short drive of most Mid-Atlantic, New England, Quebec and Ontario Province metropolitan areas.

#### Albany-Rensselaer, NY Amtrak Station

The Albany train station is 70 miles from the resort. There is an Enterprise Rental Car Agency at the station.

#### Albany Airport (ALB)

The Albany Airport is approximately one hour from the Sagamore Resort.

The Sagamore can arrange transportation to and from the airport/train station for guests. If you are interested, please call the hotel directly at 518-644-9400 and ask for transportation information and pricing.

### Activities — Upstate New York's Luxury Resort and Sports Paradise

Discover endless opportunities for fun! The Sagamore's recreational offerings include splendid golf, wonderful programs just for kids, boating and fishing on the waterfront, complimentary tennis and other outdoor sports, plus indoor fitness, swimming, movies and games.

Activities for children include: pool (indoor with whirlpool and outdoor pool), lake and water sports, bonfires, arts & crafts, movies, games, playground, volleyball, basketball, tennis and much more! **Please visit the NYU website for more information about activities at The Sagamore.**

## Discounted NYU Hotel Rates

### Hotel Rooms & Suites

A new era of modern elegance in the heart of the Adirondacks. Originally built in 1883 and lovingly restored, the Historic Hotel features clapboard siding and classic architecture. The guest rooms have updated furnishings and a choice of garden or lake views. The Historic Hotel rooms and one-bedroom suites are richly appointed in clubstyle ambiance combined with original art and decorative accessories.

**Gardenview Hotel Room: \$265**

**Lakeview Hotel Room: \$320**

**Gardenview Hotel Suite: \$386**

**Lakeview Hotel Suite: \$424**

### Lodge Rooms & Suites

The lodge rooms and suites are the value accommodations on the property and are a short walk or shuttle ride to the hotel. Lodge rooms do not offer lake views, but have an Adirondack feel. Suites have dining alcoves, wet bar, refrigerator, microwave, gas fireplace, a 42" plasma screen, spacious bath with separate tub and walk-in shower.

**Lodge Room: \$210**

**Lodge Suite: \$332**

There is a \$15 resort fee which includes wireless internet access in guest rooms, valet or self parking, access to indoor & outdoor pool, fitness center, complimentary local and 1-800 calls, the Morgan Sightseeing Cruise, access to the Rec Center and the SKC (Sagamore Kids Club), daily newspaper and daily complimentary activities including: Kitchen Tours, History Tours and Garden Tours.

## Hotel Reservations

The above discounted rates may **only be obtained by visiting the NYU website** and booking online. **You may also call the hotel directly at 1-800-358-3585 and mention the NYU Radiology Group. Deadline for reservations: May 26, 2011.**



## NYU Course Director

### Edmond A. Knopp, M.D.

Associate Professor of Radiology  
and Neurosurgery

Associate Chair for Quality,  
Technology & Informatics

## NYU Faculty

### John Bonavita, M.D.

Assistant Professor of Radiology

Associate Chair for  
Strategic Development

### Kent P. Friedman, M.D.

Assistant Professor of Radiology  
Chief, Nuclear Medicine

### Nicole Hindman, M.D.

Assistant Professor of Radiology

### Rafael Rivera, M.D.

Assistant Professor of Radiology

## Target Audience

This course is designed for clinical radiologists in academic or private practice.

## Statement of Need/ Course Description

It is imperative to stay abreast of the most up-to-date imaging protocols when examining the abdomen, neuro, chest, pediatric and musculoskeletal system (including MR, CT, US & PET/CT) in order to improve image interpretation. Clinical radiologists must establish appropriate advanced imaging techniques and a wide range of topics will be covered in this program including: Spine Imaging, PET/CT of the Breast, Focal Liver Lesions, Pediatric Ultrasound, Imaging the Female Pelvis and Post-Op Thoracic Aorta.

The participant will learn how to utilize new strategies/pulse sequences in CT and MR, and apply this understanding to enhance clinical practices. Dose conserving methods for CT will be covered pertaining to clinical protocols for abdominal, pediatric and chest imaging. Additionally, the new staging system for carcinoma of the lung, tumor markers, and changes in therapy that have resulted from this new staging system will be reviewed.

## Learning Objectives

- Describe how the combination of advanced CT and MR technologies should be utilized to diagnose renal mass lesions and to determine when to follow, operate and biopsy.
- Describe spinal degenerative disease, and utilize the new and emerging nomenclature in order to convey the information to clinicians in a useful lexicon.

- Describe the indications for FDG PET/CT in patients with breast cancer and recognize clinical scenarios in which PET/CT is not indicated for patients with breast cancer.
- Based on new recommendations, establish appropriate ultrasound imaging guidelines for the identification of thyroid nodules which do not need biopsy.
- Formulate a strategy to adopt the new practice guidelines for applications of sonography in order to minimize pediatric radiation exposure for both the evaluation of the emergent and routine pediatric pathology.

## Accreditation Statement

The NYU Post-Graduate Medical School is accredited by the Accreditation Council for Continuing Medical Education to provide continuing medical education for physicians.

## Credit Designation

The NYU Post-Graduate Medical School designates this educational activity for a maximum of 18 AMA PRA Category 1 Credits™. Physicians should claim only the credit commensurate with the extent of their participation in the activity.

## Disclosure Statement

The NYU Post-Graduate Medical School adheres to ACCME Essential Areas and Policies, including the Standards for Commercial Support regarding industry support of continuing medical education. In order to resolve any identified conflicts of interest, disclosure information is provided during the planning process to ensure resolution of any identified conflicts. Disclosure of faculty and commercial relationships as well as the discussion of unlabeled or unapproved use of any drug, device or procedure by the

## Special Needs

The Post-Graduate Medical School of the New York University School of Medicine, in compliance with the legal requirements of the Americans with Disabilities Act, requests any participant of this CME course who is in need of accommodation to submit written requests to our office at least one month prior to the course date.

## Meeting Registration

Online registration is fast and easy. Go to [www.radcme.med.nyu.edu](http://www.radcme.med.nyu.edu) to register or download the registration form.

## Questions

Please call us at 212-263-0724 with any questions about the meeting.

# Clinical Imaging Symposium

at the La Posada de Santa Fe Resort & Spa

August 1–5, 2011

## Meeting Schedule

### Sunday, July 31st

4:00 – 6:00 pm Registration

### Monday, August 1st

7:15 am Registration and Breakfast  
7:55 am Welcome  
8:00 am Advanced Imaging of Intracranial Neoplasms  
Edmond A. Knopp, M.D.  
8:30 am Imaging of the Female Pelvis: Refining the Diagnosis  
Nicole Hindman, M.D.  
9:00 am The Ground Glass Nodule  
John A. Bonavita, M.D.  
9:30 am Complex Renal Lesions  
Nicole Hindman, M.D.  
10:00 am Coffee Break  
10:15 am Spine Imaging — Degenerative Disease  
Edmond A. Knopp, M.D.  
11:00 am Spine Imaging— Nondegenerative Disease  
Edmond A. Knopp, M.D.  
11:45 am Body Cases of the Day  
Nicole Hindman, M.D.  
12:30 pm Questions  
12:45 pm Adjourn  
6:00 pm–7:00 pm Welcome Reception

### Tuesday, August 2nd

7:30 am Breakfast  
8:00 am Imaging of Intracranial Infections  
Edmond A. Knopp, M.D.  
8:30 am Thyroid Nodules  
John A. Bonavita, M.D.  
9:00 am Abdominal Post-Operative Complications  
Nicole Hindman, M.D.  
9:30 am Thoracic Aorta — Pre- and Post-Op Evaluation  
John A. Bonavita, M.D.  
10:00 am Coffee Break  
10:15 am SAM: Focal Liver Lesions  
Nicole Hindman, M.D.  
11:00 am SAM Continued: Focal Liver Lesions  
Nicole Hindman, M.D.  
11:45 am Chest Cases of the Day  
John A. Bonavita, M.D.  
12:30 pm Questions  
12:45 pm Adjourn

### Wednesday, August 3rd

**FREE DAY**

### Thursday, August 4th

7:30 am Breakfast  
8:00 am Diffuse Lung Disease — for Non Academics  
John A. Bonavita, M.D.  
8:30 am Breast Cancer — PET/CT  
Kent P. Friedman, M.D.  
9:00 am Staging of Lung Cancer — Where Do You Fit In?  
John A. Bonavita, M.D.  
9:30 am PET/CT of Lung Cancer  
Kent P. Friedman, M.D.  
10:00 am Coffee Break  
10:15 am SAM: Pediatric Ultrasound  
Rafael Rivera, M.D.  
11:00 am SAM Continued: Pediatric Ultrasound  
Rafael Rivera, M.D.  
11:45 am Nuclear Medicine Cases of the Day  
Kent P. Friedman, M.D.  
12:30 pm Questions  
12:45 pm Adjourn

### Friday, August 5th

7:30 am Breakfast  
8:00 am PET/CT in Lymphoma  
Kent P. Friedman, M.D.  
8:30 am Pediatric MR of Vascular Anomalies — An Algorithmic Approach  
Rafael Rivera, M.D.  
9:00 am GYN Malignancies — PET/CT  
Kent P. Friedman, M.D.  
9:30 am Neuro PET/CT  
Kent P. Friedman, M.D.  
10:00 am Coffee Break  
10:15 am Imaging the Patient with Seizures — A Case Based Approach  
Edmond A. Knopp, M.D.  
11:00 am Pediatric MSK MRI — A Primer  
Rafael Rivera, M.D.  
11:45 am Pediatric Cases of the Day  
Rafael Rivera, M.D.  
12:30 pm Questions  
12:45 pm Adjourn

SAMs (Self Assessment Module) — Earn 2 SAM Credits!  
Pending approval from the ABR

You may register for this meeting Online or by completing the registration form on our website and faxing to 212-263-3959

<http://www.med.nyu.edu/courses/cme/SF11>

# Clinical Imaging Symposium

at the La Posada de Santa Fe Resort & Spa

August 1 – 5, 2011

## Santa Fe, New Mexico

Santa Fe is situated at 7,000 feet in the foothills of the southern Rocky Mountains. It was founded between 1607 and 1610, making it the second oldest city, as well as the highest and oldest capital in the U.S. In 1912, New Mexico officially achieved statehood and today its unique offerings of art, culture and ancient traditions make it a world-class destination.

There are over 300 art galleries and more than a dozen major museums showcasing an array of art, culture, history and traditions, as well as the world-class Santa Fe Opera. The city has also earned a reputation with food-lovers—New Mexican, creative Southwestern cuisine, or authentic Italian, French, Asian and other world cuisines, the city offers more than 200 choices!

Santa Fe is located in the high desert; expect warm weather during the day and cool weather in the evenings.

## Traveling to La Posada

Approximately one hour from Albuquerque International Airport (ABQ)

Approximately 20 minutes from Santa Fe Airport (SAF)

Approximately 90 minutes south of Taos

**Flying into Albuquerque and renting a car is by far the most popular way to travel around New Mexico.** Shuttle services are also available from the Albuquerque airport, Santa Fe airport, and the train station located in Lamy, New Mexico.

## La Posada de Santa Fe Resort & Spa

La Posada features contemporary luxury and legendary old world elegance, and is synonymous with Santa Fe style. Nestled on six beautifully landscaped acres in the heart of Santa Fe, this AAA Four Diamond resort is a haven of Adobe-style architecture, colorful gardens, and cozy outdoor fireplaces. Lose yourself in the magic, charm, and mystery of the Southwest at La Posada!

Just two blocks from Santa Fe's world-renowned historic Plaza and Canyon Road. Just a short walk to over 200 renowned art galleries and hundreds of museums, shops, boutiques and restaurants!

Discover rustic beauty and a luxuriously restful environment at La Posada. There are no two rooms alike, creating the ultimate Southwestern escape. The intimate New Mexico accommodations, dating back to between 1880 and the early 1900's, showcase vibrant colors, traditional low viga and latilla ceilings and local artwork. Because of their historic nature, they are of museum room quality and express

the charm and flavor of the era with original floors and adobe walls. All guest rooms were renovated in 2008, with special attention to the integrity of the era and the physical structures, while updating with plush beds, vibrant colors and soft fabrics, flat screen televisions and more.

## NYU Room Block

**(enjoy these fantastic group rates!)**

### Classic Rooms — \$269

These charming rooms are decorated with Southwestern-style furnishings and the vibrant colors of New Mexico. Includes either a king or queen bed.

### Deluxe Rooms — \$299

With a rich Southwestern style, the deluxe rooms feature patios with a king or queen bed. Step out onto your shady patio for a breath of crisp air and the sight of brilliant cobalt-blue skies. Some deluxe rooms feature fireplaces.

- Resort fee (normally \$30 plus tax) is **waived for the NYU group. All room rates include WiFi access, Starbucks coffee & tea in rooms and lobby, local calls, daily paper and access to fitness room, pool and hot tub.**
- *Bellmen and housekeeping gratuities are at the individual's discretion.*
- *Parking at the hotel is \$15/night.*

## Hotel Reservations

**The above discounted rates may only be obtained by booking through (TPI) Travel Planners, Inc. (NYU's travel representative).** Online hotel reservations can be made by visiting the NYU website (<http://www.med.nyu.edu/courses/cme/sf11>) and following the link.

You may also download the PDF found on the NYU website and fax this to TPI. **For questions, call TPI directly at 1-800-531-7201. Deadline for making reservations is June 24, 2011.**

## Activities in Santa Fe

**NYU has planned wonderful private tours for the group so as not to conflict with the meeting agenda. They will be offered exclusively to NYU attendees and guests and include:**

**Historic Walking Tour, Bandelier National Monument Tour, Culinary Walking Tour, A Night at the Santa Fe Opera, Fly Fishing, Museums/Gallery Tour (with Georgia O'Keefe Museum), River Rafting, "Behind Adobe Walls" and more! Please visit the NYU website for details.**

## NYU RADIOLOGY CME CALENDAR

### 2011

- March 14–18  
**9th ANNUAL NYU RADIOLOGY ALPINE IMAGING SYMPOSIUM**  
Park Hyatt Beaver Creek, Beaver Creek, CO
- May 23–26  
**SPORTS MEDICINE IMAGING STATE OF THE ART**  
NYU Langone Medical Center, New York, NY
- June 27–July 1  
**SUMMER RADIOLOGY SYMPOSIUM**  
The Sagamore, Lake George, NY
- August 1–5  
**CLINICAL IMAGING SYMPOSIUM**  
La Posada, Santa Fe, NM
- October 16  
**2nd ANNUAL DUAL ENERGY CT SYMPOSIUM**  
NYU Langone Medical Center, New York, NY
- October 17–18  
**CLINICAL STATE OF THE ART BODY MRI**  
NYU Langone Medical Center, New York, NY
- October 24–28  
**FALL RADIOLOGY SYMPOSIUM**  
Four Seasons Santa Barbara, Santa Barbara, CA
- December 12–17  
**30th ANNUAL HEAD TO TOE IMAGING**  
Hilton New York, New York, NY
- 2012**
- January (tentative) **NYU CLINICAL IMAGING SYMPOSIUM IN MAUI**  
Four Seasons, Maui

[WWW.RADCME.MED.NYU.EDU](http://WWW.RADCME.MED.NYU.EDU)

### For More Information:

**Michelle R. Koplik**  
Michelle.Koplik@nyumc.org  
212-263-3936

**Marisa P. Bruno**  
Marisa.Bruno@nyumc.org  
212-263-0724



## School of Medicine

New York University  
School of Medicine  
Department of Radiology  
462 1st Avenue  
OBH, C&D Bldg, 1st FL, Rm 4  
New York, NY 10016

Non-Profit Organization  
U.S. Postage  
**PERMIT #8167**  
New York University



## Summer Radiology Symposium

*at The Sagamore  
on Lake George*

**June 27–July 1, 2011**  
Boltin Landing, New York



## Clinical Imaging Symposium

*at the La Posada de  
Santa Fe Resort & Spa*

**August 1–5, 2011**  
Santa Fe, New Mexico