

Department of Radiology presents

# NYU Clinical Imaging Symposium in Maui

### Target Audience

This course is designed for clinical radiologists in academic or private practice.

### Statement of Need/Course Description

There are many recent technological advances in imaging techniques which can be applied to current clinical practice. Maintenance of certification requires continued review of essential imaging techniques in all areas of radiology, including breast, musculoskeletal, thoracic, women's and emergency imaging. This course is designed to demonstrate a practical approach to image acquisition and interpretation in various clinical settings using current up-to-date imaging techniques. The lectures will address optimal imaging methods and protocols, including topics such as multi-modality imaging evaluation of the pregnant patient with acute abdominal and thoracic conditions, state of the art methods for detection of breast cancer, role of high resolution chest CT in thoracic imaging, musculoskeletal MRI, including marrow imaging, and multidetector CT evaluation of the trauma patient. In addition to didactic lectures, several case-based sessions will also be included.

### Accreditation Statement

The NYU Post-Graduate Medical School is accredited by the Accreditation Council for Continuing Medical Education to provide continuing medical education for physicians.

### Disclosure Statement

The NYU Post-Graduate Medical School adheres to ACCME Essential Areas and Policies, including the Standards for Commercial Support regarding industry support of continuing medical education. In order to resolve any identified conflicts of interest, disclosure information is provided during the planning process to ensure resolution of any identified conflicts. Disclosure of faculty and commercial relationships as well as the discussion of unlabeled or unapproved use of any drug, device or procedure by the faculty will be fully noted at the meeting.

### Learning Objectives

- Determine how to implement the advances in female MR protocols, including diffusion weighted, dynamic and 3D imaging for evaluation of such disorders as gynecologic malignancies, uterine anomalies, pelvic organ prolapse and endometriosis.
- Discuss how best to incorporate new developments in imaging and interpreting images of common musculoskeletal entities, as well as bone marrow imaging, into clinical practice.
- Based on new imaging techniques, including digital mammography and breast MRI, recognize subtle signs of malignancy and describe how the management of breast diseases has changed with the introduction of new technology.
- Discuss the categorization of aortic disease, knowledge of what thoracic surgeons need to know and radiographic appearance of the 'normal' post-operative appearance of the thoracic aorta versus complications.
- Determine how to best utilize the latest MDCT scanning techniques to more efficiently evaluate the multiply injured trauma patient, including the pregnant patient, thereby providing better pre-surgical and post-operative patient care.

### Credit Designation Statement

The NYU Post-Graduate Medical School designates this live activity for a maximum of 19 AMA PRA Category 1 Credits™. Physicians should claim only the credit commensurate with the extent of their participation in the activity.

### Special Needs

The Post-Graduate Medical School of the New York University School of Medicine, in compliance with the legal requirements of the Americans with Disabilities Act, requests that any participant of this CME course who is in need of accommodation, submit written requests to our office at least one month prior to the course start date.

### Registration Information

You may register online or by completing the registration form on page 5.

# Meeting Schedule

NYU Clinical Imaging Symposium in Maui • January 23–27, 2012

## Monday, January 23rd

### Breast & Women's Imaging

7:15am  
Registration and  
Breakfast

8:00am  
Update on Screening  
Mammography and  
Screening Breast US  
Linda Moy, M.D.

8:45am  
Female Pelvic MRI:  
How, When and Why  
Genevieve L. Bennett, M.D.

9:30am  
Clinical Utility of  
Breast MRI  
Linda Moy, M.D.

10:15am  
Coffee Break

10:30am  
MDCT of the Female  
Pelvis: Making  
a More Specific  
Diagnosis  
Genevieve L. Bennett, M.D.

11:15am  
Strategies for Finding  
Commonly Missed  
Subtle Findings of  
Breast CA  
Linda Moy, M.D.

12:00pm  
Ectopic Pregnancy:  
Challenges and  
Pitfalls  
Genevieve L. Bennett, M.D.

12:45pm  
Questions

1:00pm  
Adjourn

6:00–7:00pm  
Welcome Reception

## Tuesday, January 24th

### Thoracic and Breast Imaging

7:30am  
Breakfast

8:00am  
Update on  
Pulmonary Nodule  
Assessment  
and Follow-Up  
Maria C. Shiau, M.D.

8:45am  
Management of  
Probably Benign  
Breast Lesions  
Linda Moy, M.D.

9:30am  
Approach to HRCT  
Maria C. Shiau, M.D.

10:15am  
Coffee Break

10:30am  
Challenging Breast  
Ultrasound Cases  
Linda Moy, M.D.

11:15am  
Imaging of the  
Thoracic Aorta  
Maria C. Shiau, M.D.

12:00pm  
Imaging Thoracic  
Trauma  
Mark P. Bernstein, M.D.

12:45pm  
Questions

1:00pm  
Adjourn

## Wednesday, January 25th

FREE DAY

## Thursday, January 26th

### MSK and Trauma Imaging

7:30am  
Breakfast

8:00am  
64 MDCT Multi-  
Trauma Imaging  
Mark P. Bernstein, M.D.

8:45am  
Stress Lesions and  
Interesting Fracture  
Complications  
Sandra L. Moore, M.D.

9:30am  
Maxillofacial Trauma  
Imaging: Saving Face  
Mark P. Bernstein, M.D.

10:15am  
Coffee Break

10:30am  
Marrow on MRI  
Sandra L. Moore, M.D.

11:15am  
Easily Missed  
Thoracolumbar Spine  
Trauma  
Mark P. Bernstein, M.D.

12:00pm  
Wrist Imaging  
Sandra L. Moore, M.D.

12:45pm  
Questions

1:00pm  
Adjourn

## Friday, January 27th

### MSK & Imaging Acute Conditions in Pregnancy

7:30am  
Breakfast

8:00am  
Imaging the Pregnant  
Patient with  
Abdominal Pain  
Genevieve L. Bennett,  
M.D.

8:45am  
Imaging of Trauma  
in Pregnancy  
Mark P. Bernstein, M.D.

9:30am  
Imaging for Acute  
Pulmonary Embolism  
in Pregnancy  
Maria C. Shiau, M.D.

10:15am  
Coffee Break

10:30am  
Imaging MSK  
Infection  
Sandra L. Moore, M.D.

11:15am  
Interesting/  
Challenging Female  
Pelvis Cases  
Genevieve L. Bennett, M.D.

12:00pm  
Interesting/  
Challenging  
MSK cases  
Sandra L. Moore, M.D.

12:45pm  
Questions

1:00pm  
Adjourn

## NYU Course Director

Genevieve L. Bennett, M.D.  
Assistant Professor of Radiology

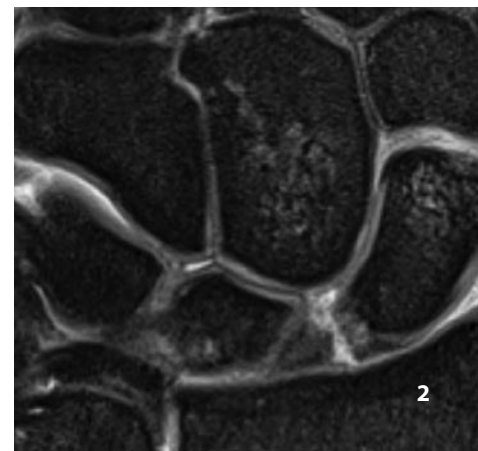
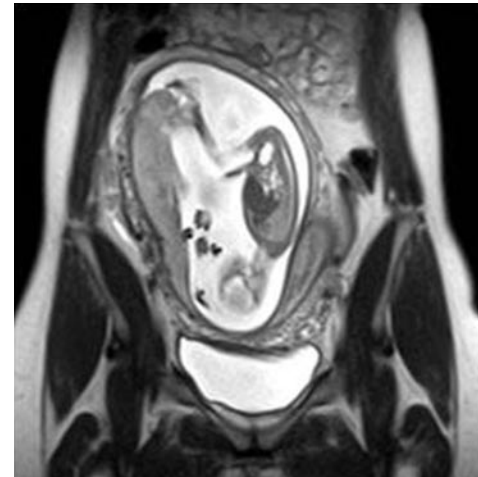
## NYU Faculty

Mark P. Bernstein, M.D.  
Assistant Professor of Radiology

Sandra L. Moore, M.D.  
Assistant Professor of Radiology

Linda Moy, M.D.  
Assistant Professor of Radiology

Maria C. Shiau, M.D.  
Assistant Professor of Radiology





# NYU Clinical Imaging Symposium in Maui

January 23–27, 2012

## The Fairmont Kea Lani, Maui

Hawaii's only ALL-SUITE luxury oceanfront resort rests gracefully on Polo Beach, situated on the sunny southwest shores of Wailea, Hawaii and has just completed a multi-million dollar renovation. All one-bedroom SUITES are 840 square feet and offer: a spacious living room with sleeper sofa; separate master bedroom; elegant marble bathroom; personal lanais; and all new furniture. Amenities include HD flat screen TVs, luxurious linens, a wet bar, microwave, coffee maker, refrigerator, DVD players, iPod docking stations, and high speed Internet access (Complimentary when you sign up for the free Fairmont President's Club membership: \$14.95 plus tax per day without membership).

The Resort features four specialty restaurants from casual to fine dining; gourmet bakery and deli; kids 5 and under eat free dining program; two lagoon-style pools with a 140-foot waterslide; a third, separate adult pool; two whirlpools; the full service Spa Kea Lani & Salon; 24 hour Fitness Center; complimentary shuttle service to any Wailea location; and Keiki Lani children's program. Five of Maui's finest championship golf courses are close by as are two first class tennis clubs. Also nearby are the Shops at Wailea, offering boutiques, art galleries, local crafts, and restaurants.

## Hotel and Airline Reservations

Travel Planners, Inc. (TPI) is the appointed Travel Coordinator. You may book your flight on your own, or with TPI, but **all hotel reservations must be made directly through TPI in order to obtain the discounted group rate.**

Complete the registration form on page 4 or book online through the NYU website.

For questions, contact **1-800-531-7201 to speak with a TPI agent.**

Deadline for Hotel Reservations: December 16, 2011

Airline: TPI has contracted for Discounted Airfares on American Airlines, however, will book any airline requested and will always research to obtain the lowest airfare for the best flight available. A \$35 service fee will apply.

**Enjoy these special discounted rates for NYU attendees with no resort fee.** The following special **SUITE** rates have been reserved for NYU attendees only.

	<i>NYU Rates</i>	<i>Public Rates</i>
Moderate Suite	\$344	\$569
Fairmont Suite	\$370	\$629
Partial Ocean View Suite	\$394	\$669
Ocean View Suite	\$444	\$799
Deluxe Ocean View Suite	\$490	\$869

**Moderate Suites:** limited view (either parking facility or side-street).

**Fairmont Suites:** overlook scenic tropical gardens.

**Partial Ocean View Suites:** partial or angled ocean view from OUTSIDE the suite.

**Ocean View Suites:** partial or angled ocean view from WITHIN the suite.

**Deluxe Ocean View Suites:** full ocean view.

Rates are single, double, triple or quad occupancy, plus 13.42% tax.

**Bellmen and housekeeping gratuities are at your discretion.**

**Complimentary self parking** or overnight valet parking at \$20/day.



## About Maui

Hawaiian legend tells us that the islands were formed by the god Maui who, while fishing with his brothers, hooked the islands and pulled them from the sea. Named for this god, Maui is an island paradise. Towering into its vivid blue skies is the world's largest dormant volcano, Haleakala. Gorgeous white sand beaches, whale-watching, championship golf and award-winning cuisine are just a few reasons Maui was named by CONDE NAST TRAVELER Readers' Choice Awards as "The Best Island in the World!"

The resort offers snorkeling, sailing, kayaking, stand-up paddling, scuba diving and island-wide excursions. Learn about Hawaiian culture through the resort's own Hawaiian Canoe Experience and Cultural Property tour. If you prefer a more leisurely pace, pamper yourself at one of Hawaii's most acclaimed spas, Spa Kea Lani. Fitness classes are also available such as yoga and Polo Beach workout!

## Traveling to Maui

**Fly into Maui's Kahului Airport (OGG).** Five major airlines, United, Delta, TWA, American and Hawaiian, provide service to Maui's Kahului Airport. United, Delta and American offer non-stop flights from Los Angeles and San Francisco. Hawaiian Airlines has four direct flights from Los Angeles, San Francisco, Seattle and Portland with a stopover in Honolulu.

**Transfer time from Kahului Airport(OGG) to the Resort is about 35 minutes.** Taxis are readily available at the airport (approximately \$25).

Parking: self-parking is complimentary and overnight valet parking is available for \$20 per night.

Airport Shuttle Service:

[www.mauishuttle.com](http://www.mauishuttle.com) or [www.speedishuttle.com](http://www.speedishuttle.com).

**NOTE: The hotel offers a complimentary shuttle service to anywhere in the Wailea area. Unless you wish to explore outside this area, a rental car may not be necessary.**

# Travel/Hotel Reservations • NYU Radiology Group

NYU Clinical Imaging Symposium in Maui • January 23–27, 2012

BOOK ON LINE AT: <https://tpires.com/nyuh/form.htm>

Or Complete and Fax To: 210-341-5252

Name (Last,First) \_\_\_\_\_

Spouse/Guest \_\_\_\_\_

Child \_\_\_\_\_ Age \_\_\_\_\_

Second Child \_\_\_\_\_ Age \_\_\_\_\_

Mailing Address:

Home  Office

City/State/Zip \_\_\_\_\_

Home Phone \_\_\_\_\_

Business Phone \_\_\_\_\_

Fax \_\_\_\_\_

E-Mail \_\_\_\_\_

## 1. HOTEL RESERVATIONS: Fairmont Kea Lani, Maui

Place a 1, 2 & 3 to indicate your room preference.

\_\_\_\_\_ Moderate Suite \$344      \_\_\_\_\_ Ocean View Suite \$444  
\_\_\_\_\_ Fairmont Suite \$370      \_\_\_\_\_ Deluxe Ocean View Suite \$490  
\_\_\_\_\_ Partial Ocean View Suite \$394

Arrival Date: \_\_\_\_\_

Departure Date: \_\_\_\_\_ # of nights: \_\_\_\_\_

Comments: \_\_\_\_\_

If you have special needs, please attach a separate letter.

## 2. AIRLINE RESERVATIONS

Arrange air transportation from (city) \_\_\_\_\_

to arrive Maui on (date) \_\_\_\_\_

and return on (date) \_\_\_\_\_

Airline Preference (if any) \_\_\_\_\_

Frequent Flyer # \_\_\_\_\_

Seating Preference: \_\_\_\_\_ Window \_\_\_\_\_ Aisle

## 3. PAYMENT SUMMARY

HOTEL Fairmont Kea Lani, Maui (if not providing credit card)

# rooms \_\_\_\_\_ @ full prepayment including tax \$ \_\_\_\_\_

OPTIONAL ACTIVITIES (see bottom of this page for more info.):

Waterfall Hike – Monday, January 23

# \_\_\_\_\_ @ \$149 each \$ \_\_\_\_\_

Whale Watch/Sunset Cruise, Tuesday, January 24

# \_\_\_\_\_ @ \$149 each \$ \_\_\_\_\_

# \_\_\_\_\_ @ \$105 each (child 3–12 yrs) \$ \_\_\_\_\_

Sunrise Tour, Wednesday, January 25

# \_\_\_\_\_ @ \$149 each \$ \_\_\_\_\_

Molokini Snorkel Sail, Wednesday, January 25

# \_\_\_\_\_ @ \$149 each \$ \_\_\_\_\_

Zip Line Adventure, Thursday, January 26 (10 yrs and older)

# \_\_\_\_\_ @ \$149 each \$ \_\_\_\_\_

TOTAL DUE \$ \_\_\_\_\_

Check is enclosed. (Made payable to Travel Planners, INC)

Credit Card (Circle One):

Visa      MasterCard      American Express      Discover

\_\_\_\_\_ Guarantee hotel(s)\* \_\_\_\_\_ Charge for Optional Tours

\_\_\_\_\_ Airline Tickets

Account number \_\_\_\_\_ Exp. Date \_\_\_\_\_

3 or 4 Digit Security Code: \_\_\_\_\_

(Found on the back of Visa, MasterCard; Front of American Express)

Billing Name (Please Print) \_\_\_\_\_

Signature \_\_\_\_\_

\* A deposit equal to 2 nights stay is required to book reservations. If a credit card is provided, TPI will provide this to the hotel approximately 45 days prior to the group arrival and charges will apply at that time. If providing deposit by check, TPI will forward all payments to the hotel at approximately 45 days prior to the group arrival and payments will then be posted to individual records. The hotel charges for early departures. Departure date should be reconfirmed upon check in.

**Travel Planners, Inc.**

**Phone: 210-341-8131 or 800-531-7201**

**Fax: 210-341-5252**

**Email: NYU@tpires.com**

## Optional Group Activities

The following activities have been organized for NYU attendees and guests. All activities have been arranged so as not to conflict with the NYU meeting schedule. TPI reserves the right to cancel or change the tour to a public tour if minimums are not met. Details can be found on the NYU website. You may reserve activities online or by completing the hotel reservation page of this brochure.

**Monday, January 23**  
**Tuesday, January 24**  
**Wednesday, January 25**

**Thursday, January 26**

Exclusive Rainforest Waterfall Hike  
Sunset Dinner Sail/Whale Watch  
Exclusive Haleakala Sunrise Tour &  
Exclusive Molokini Snorkel Sail  
Exclusive Zip Line—4 Line Adventure

Staff will be on site to assist with reserving additional activities, dining suggestions and questions about the area.

# NYU Clinical Imaging Symposium in Maui

January 23–27, 2012

## Registration Form

*Please Print Clearly*

Name

Address

City State Zip

Day Phone

Fax

E-mail (required for course confirmation)

Degree Specialty

Subspecialty

Dietary Restrictions

(Please indicate any dietary restrictions on the registration form when you register.)

## Registration Fee Options

*(Please check appropriate boxes below)*

NYU Clinical Imaging Symposium in Maui  
January 23-27, 2012  
Faitmont Kea Lani, Maui

\$975 Registration fee for physician

\$750 Discounted fee\*

\* Discounted fees apply to NYU School of Medicine alumni, M.D.'s employed by the Dept. of Veterans Affairs, full-time active military personnel, technologists, current residents/fellows, Canadian and other non-US physicians.

\* Meeting registration and reservations made through the NYU hotel room block entitle each registrant to: conference syllabus, daily meeting breakfasts, daily meeting coffee breaks and welcome reception.

Online Registration is Fast & Easy!

Go to: [www.radcme.med.nyu.edu](http://www.radcme.med.nyu.edu)

## Methods of Payment

Check in U.S. Dollars made payable to NYU Department of Radiology

Credit Card Payment (see below)

## Payment by Credit Card

Bill to:  Visa  Mastercard  American Express

Card Member's Name (*print carefully*)

Card #

Exp Date: Month/Year \_\_\_\_\_ / \_\_\_\_\_

Amount to be Charged: \$ \_\_\_\_\_

Signature (*required to process*)

Fax Form to: (212) 263-3959

## If Sending Check, Please Mail to:

**Marisa Costello**

Department of Radiology  
462 First Avenue  
OBH, C&D, Floor 1, Room 4  
New York, NY 10016

### Refund Policy:

If you need to cancel your enrollment, a \$75 service fee will be assessed for your tuition payment if written notice is received at least 30 days in advance and a \$150 service fee for cancellations made within 30 days. No refunds are possible if written notification is not sent.

### Course Cancellation Policy:

In the unusual circumstance that this course is cancelled, two weeks' notice will be provided and full tuition refunded. The NYU Post-Graduate Medical School is not responsible for any airfare, hotel or other costs incurred.

### Educational Needs:

If there is a specific question or topic relating to this course, please submit it on the registration form or on the website when registering online.

## In Case of Questions, Contact:

Michelle R. Koplik, Director of CME  
(212) 263-3936 or [michelle.koplik@nyumc.org](mailto:michelle.koplik@nyumc.org)

Marisa Costello, Program Coordinator  
(212) 263-0724 or [marisa.costello@nyumc.org](mailto:marisa.costello@nyumc.org)





We hope you'll plan on joining us at one of these CME courses.  
[www.radcme.med.nyu.edu](http://www.radcme.med.nyu.edu)

**NYU** School of Medicine

Non-Profit Organization  
U.S. Postage  
**PERMIT #8167**  
New York University

**Department of Radiology**  
462 First Avenue  
OBH, C&D, Floor 1, Room 4  
New York, NY 10016

2011

OCT 16 **2nd Dual Energy CT Symposium**  
NYU Medical Center, New York, NY

OCT 17-18 **Clinical State of the Art Body MRI**  
NYU Medical Center, New York, NY

OCT 24-28 **Fall Radiology Symposium**  
Four Seasons, Santa Barbara, CA

DEC 12-17 **30th Annual Head To Toe Imaging**  
The Hilton New York, New York, NY

2012

JAN 23-27 **NYU Clinical Imaging Symposium**  
Fairmont Kea Lani, Maui, HI

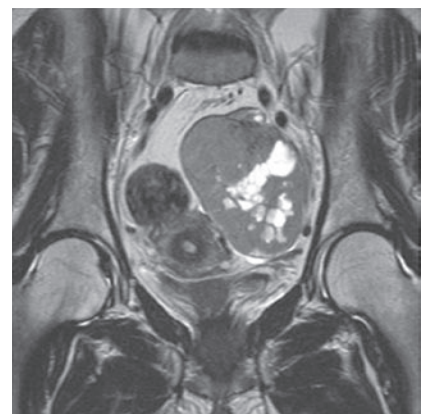
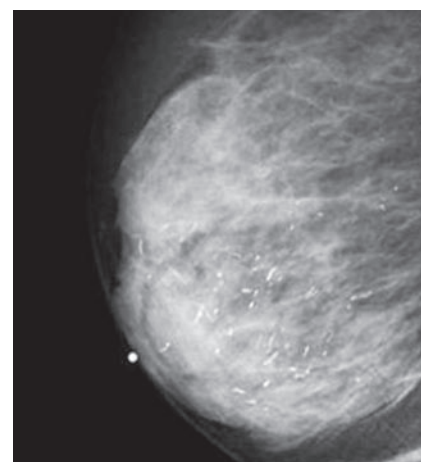
MAR 12-16 **10th Annual NYU Radiology Alpine Imaging Symposium**  
The Chateaux, Deer Valley, UT

MAY 21-24 **Sports Medicine Imaging State of the Art**  
(tentative)  
NYU Medical Center, New York, NY

JUL 30-AUG 3 **Summer Radiology Symposium in Whistler**  
Four Seasons, Whistler, Canada



Fairmont Kea Lani, Maui



Department of Radiology presents

**NYU Clinical Imaging Symposium in Maui**

**January 23-27, 2012**