

The Department of Radiology Presents:

# 12th Annual NYU Radiology Alpine Imaging Symposium *in Snowmass*

*Sponsored by the NYU Post-Graduate Medical School*

## General Information

### Target Audience

This course is designed for practicing clinical radiologists in academics or private practice.

### Course Description/Statement of Need

Radiologists must be aware of the changes and developments in all areas of radiology (MR, CT, US, X-ray) including Musculoskeletal, Thoracic, Breast, PET and Abdominal Imaging in order to maintain certification and optimize patient care. It is imperative that radiologists stay up-to-date on the latest imaging protocols and be aware of technological advances and how to incorporate them into their everyday practice.

Several important topics to be covered include: imaging interstitial lung diseases, quality initiatives in radiology, mammography screening, PET/CT in colorectal cancer and breast cancer and US of the foot/ankle. The essentials presented in this program are meant to be integrated into the participants' practices in an effort to improve their current knowledge, imaging skills and ultimately improve patient care.

### Learning Objectives

- Describe the use of US of the musculoskeletal system as a cost effective imaging technique to image a variety of musculoskeletal abnormalities.
- Evaluate the critical factors influencing radiation dosage for CT imaging in order to achieve improved radiation safety and imaging performance.
- Describe the most up-to-date non-invasive imaging technologies in the evaluation of the pre- and post-operative thoracic aorta, and identify the new information that surgeons and interventionalists require for treatment planning.
- Describe the current recommendations for screening mammography, including current guidelines and controversies.

**March 17-21, 2014**

**The Westin Snowmass Resort  
Snowmass, CO**

### Registration Information

You may register for this meeting online or by completing the registration form on page 5.

### Accreditation Statement

The NYU Post-Graduate Medical School is accredited by the Accreditation Council for Continuing Medical Education to provide continuing medical education for physicians.

### Credit Designation Statement

The NYU Post-Graduate Medical School designates this live activity for a maximum of 22.5 *AMA PRA Category 1 Credits™*. Physicians should claim only the credit commensurate with the extent of their participation in the activity.

### Disclosure Statement

The NYU Post-Graduate Medical School adheres to ACCME Essential Areas and Policies, including the Standards for Commercial Support regarding industry support of continuing medical education. In order to resolve any identified conflicts of interest, disclosure information is provided during the planning process to ensure resolution of any identified conflicts. Disclosure of faculty and commercial relationships as well as the discussion of unlabeled or unapproved use of any drug, device or procedure by the faculty will be fully noted at the meeting.

### Special Needs

The Post-Graduate Medical School of the New York University School of Medicine, in compliance with the legal requirements of the Americans with Disabilities Act, requests that any participant of this CME course who is in need of accommodation, submit written requests to our office at least one month prior to the course start date.

# Schedule

12th Annual NYU Radiology Alpine Imaging Symposium in Snowmass • March 17-21, 2014

## Sunday, March 16th

8:30am-10:00am & 5:30pm-6:30pm

Registration & Lift Ticket Distribution

## Monday, March 17th

### Morning Session (Breast/MSK)

6:45am Registration & Breakfast

7:10am Welcome

Hildegard K. Toth, M.D.

7:15am Screening Mammography: The Facts

Hildegard K. Toth, M.D.

8:00am MSK Ultrasound: General Concepts

Ronald S. Adler, Ph.D., M.D.

8:45am MRI BIRADS Lexicon: Update and Review

Hildegard K. Toth, M.D.

9:30am Questions & Discussion

9:45am Adjourn

### Afternoon Session (Thoracic /PET)

4:00pm Refreshments & Cases of the Day:

Thoracic Imaging

4:15pm HRCT Lexicon and Signs:

The Rosetta Stone to Crazy Paving

Georgeann McGuinness, M.D., F.A.C.R.

5:00pm PET/CT in Lung Cancer

Kent P. Friedman, M.D.

5:45pm Case Review: Thoracic Imaging

Georgeann McGuinness, M.D., F.A.C.R.

6:15pm Questions & Discussion

6:30pm Adjourn

## Tuesday, March 18th

### Morning Session (MSK/Thoracic)

6:45am Breakfast

7:15am US of the Shoulder

Ronald S. Adler, Ph.D., M.D.

8:00am Acute Lung Syndromes

Georgeann McGuinness, M.D., F.A.C.R.

8:45am US of the Foot and Ankle

Ronald S. Adler, Ph.D., M.D.

9:30am Questions & Discussion

9:45am Adjourn

### Afternoon Session (Abdominal /PET)

4:00pm Refreshments & Cases of the Day:

Abdominal Imaging

4:15pm Cirrhosis and its Complications

Danny C. Kim, M.D.

5:00pm PET/CT in Colorectal Cancer

Kent P. Friedman, M.D.

5:45pm Case Review: Abdominal Imaging

Danny C. Kim, M.D.

6:15pm Questions & Discussion

6:30pm Adjourn

## Wednesday, March 19th

### Morning Session (Thoracic/Breast)

6:45am Breakfast

7:15am Fibrosing Interstitial Lung Diseases

Georgeann McGuinness, M.D., F.A.C.R.

8:00am Trends in Breast Ultrasound Utilization

Hildegard K. Toth, M.D.

8:45am Non Fibrosing Interstitial Lung Diseases

Georgeann McGuinness, M.D., F.A.C.R.

9:30am Questions & Discussion

9:45am Adjourn

### Afternoon Session (PET/Radiation Safety)

4:00pm Refreshments & Cases of the Day:

PET Imaging

4:15pm Musculoskeletal PET/CT

Kent P. Friedman, M.D.

5:00pm Quality Initiatives in Radiology

Danny C. Kim, M.D.

5:45pm Case Review: PET Imaging

Kent P. Friedman, M.D.

6:15pm Questions & Discussion

6:30pm Adjourn

## Thursday, March 20th

### Morning Session (MSK/PET)

6:45am Breakfast & Cases of the Day:

MSK Ultrasound

7:15am US Guided Interventions in the MSK System

Ronald S. Adler, Ph.D., M.D.

8:00am PET/CT in Breast Cancer

Kent P. Friedman, M.D.

8:45am Case Review: MSK Ultrasound

Ronald S. Adler, Ph.D., M.D.

9:30am Questions & Discussion

9:45am Adjourn

### Afternoon Session (Breast/Thoracic)

4:00pm Refreshments

4:15pm BIRADS 3 Lesions on MRI

Hildegard K. Toth, M.D.

5:00pm Imaging of the Mediastinum

Georgeann McGuinness, M.D., F.A.C.R.

5:45pm The Doctor-Patient Relationship in Breast Imaging

Hildegard K. Toth, M.D.

6:15pm Questions & Discussion

6:30pm Adjourn

## Friday, March 21st

### Morning Session (Abdominal/Breast)

6:45am Breakfast

**Self Assessment Module: Abdominal Imaging**

This SAM will run for 90 minutes

7:15am **SAM Part I: Adrenal Imaging**

Danny C. Kim, M.D.

8:00am **SAM Part II: Pancreas Imaging**

Danny C. Kim, M.D.

8:45am Case Review: Breast Imaging

Hildegard K. Toth, M.D.

9:30am Final Questions & Discussion

9:45am Adjourn

## NYU Course Director

**Hildegard K. Toth, M.D.**

Associate Professor of Radiology

Chief, Breast Imaging

## NYU Faculty

**Ronald S. Adler, Ph.D., M.D.**

Professor Radiology

**Kent P. Friedman, M.D.**

Assistant Professor of Radiology

Chief, Nuclear Medicine

**Danny C. Kim, M.D.**

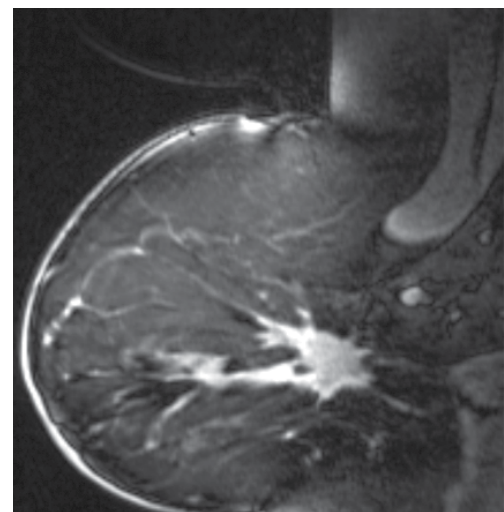
Assistant Professor of Radiology

Director of Quality & Safety

**Georgeann McGuinness, M.D., F.A.C.R.**

Professor and Sr. Vice Chair of Radiology

Acting Chief, Thoracic Imaging





## Hotel Information

### The Westin Snowmass Resort

The Westin Snowmass Resort offers ski-in/ski-out access to Snowmass Mountain and is located in the center of Snowmass Village—offering a variety of shopping, dining and nightlife options.

Snowmass Village is in the center of it all! Surrounded by majestic peaks in a natural playground second to none, you'll revel in the beauty and active lifestyle of this world-class mountain destination. Hit the slopes of one of Colorado's largest resorts, test your endurance on our cross-country trails, or simply soak in the slope-side hot tubs and take in the vista views.

### About Snowmass, Colorado

Breathtaking, exhilarating and huge are just a few ways to describe the crown jewel of Colorado—Snowmass! Often called **"the world's best ski area"**, the Snowmass Mountain offers the most ski trails than any other mountain in the US.

Snowmass has 3,128 acres of every kind of terrain, with 22 ski lifts. **Your lift tickets are good for our three other mountains (Aspen, Aspen Highlands, Buttermilk—all located within 20 minutes of Snowmass and accessible via free transportation)**, totaling 4,900 acres, with 40 lifts serving over 300 trails.

Don't know how to ski? Take advantage of **award-winning ski and snowboard schools**. The Snowmass Ski School is staffed to offer every level of lesson in an amazing variety of languages and includes a crackerjack crew of snowboard instructors. Snowmass has something for every level of skier. There are plenty of groomers and cruisers for novice skiers while our steeps, half-pipes and three terrain parks will challenge the best of the best.

After a day on the slopes, enjoy the top-rated après ski and nightlife of Snowmass/Aspen! Only a few miles from Aspen, Snowmass has its own distinct village offering fine restaurants, charming boutiques and exceptional accommodations.



## NYU Hotel Room Block

### The Westin Snowmass Resort

- Alpine King: \$299
- Deluxe Pinnacle: \$339
- Premium Pinnacle: \$369
- Mountain Suite: \$599

Discounted daily resort fee of \$15.00 includes wireless internet, local shuttle, ski valet/storage and airport transportation from Aspen airport.

### Hotel Deposit & Cancellation Policy

A one night deposit will be taken at time of booking and the balance will be taken 30 days prior to arrival. If reservation is cancelled within 30 days the full deposit is non-refundable. If reservation is cancelled before 30 days out, a full refund will be issued.

## Hotel Reservations at the Westin Snowmass

You may register online by visiting the NYU website:  
<http://www.med.nyu.edu/courses/cme/ski14>

Or you may call or email Troy Buyce at the Westin Snowmass to make your reservation. Please be sure to mention NYU Radiology.

Phone: 970-923-8215

Email: [Troy.buyce@westin.com](mailto:Troy.buyce@westin.com)

**Deadline for booking is February 13, 2014**



## Traveling to Snowmass

Snowmass is one of the most accessible Rocky Mountain resorts, with hundreds of nonstop and connecting flights weekly into Aspen/ Snowmass (ASE), Eagle Vail (EGE) and Denver (DEN) airports.

- **Aspen (ASE)** • 15 minutes from The Westin (eight miles from Snowmass village) Approximately 150 nonstop and connecting flights fly weekly into Aspen/Pitkin County Airport.  
*Complimentary airport transfers included in the resort fee at The Westin*
- **Eagle Vail (EGE)** • 90 minutes shuttle ride.  
NYU will have discounts with Colorado Mountain Express (CME)
- **Denver (DEN)** • 4 hour shuttle ride.  
NYU will have discounts with Colorado Mountain Express (CME)

### Colorado Mountain Express/Airport Shuttle

If you are flying into Eagle Vail or Denver, please book your shuttle through CME and receive the NYU discount.

#### One Way Rates (Adult):

- Denver Intl. Airport: \$97.00
- Eagle Airport: \$61.00

#### Child (12 and under):

- Denver Intl. Airport: \$65.00
- Eagle Airport: \$39.00

To receive your discounted rate, please call 1-800-525-6363 and reference **NYU** or book online at [www.coloradomountainexpress.com](http://www.coloradomountainexpress.com)



## Discounted Snowmass Lift Tickets

The NYU Group will receive up to 20-30% off window rates for lift tickets. Lift tickets are good for the Power of Four (Snowmass, Aspen, Aspen Highlands and Buttermilk)!

Please visit NYU's website to download the ski lift ticket order form.

### Lift Ticket Rates

NUMBER OF DAYS	ADULT/YOUTH (AGE 13+)	CHILDREN (AGES 12 & under)
Single day	\$99.00	\$62.00
2 day of 10	\$171.00	\$119.00
3 day of 10	\$249.00	\$173.00
4 day of 10	\$325.00	\$221.00
5 day of 10	\$395.00	\$265.00
6 day of 10	\$465.00	\$309.00

### Aspen/Snowmass Ski School

Aspen/Snowmass has four amazing mountains with a wide range of terrain to explore!

The Ski & Snowboard Schools of Aspen/Snowmass are a collection of talented and inspired Pros that are committed to helping you build confidence, understand the terrain, and guiding you to the next place in your skiing or riding. We have programs to suit every age and ability, and every lesson is 100% satisfaction guaranteed! For more information, please visit [www.aspensnowmass.com](http://www.aspensnowmass.com).

# 12th Annual NYU Radiology Alpine Imaging Symposium *in Snowmass*

March 17–21, 2014

Online Registration is fast & easy.  
Go to: [www.radcme.med.nyu.edu](http://www.radcme.med.nyu.edu)

## Registration Form

Please Print Clearly

NAME \_\_\_\_\_

ADDRESS \_\_\_\_\_

CITY \_\_\_\_\_

STATE \_\_\_\_\_

ZIP \_\_\_\_\_

DAY PHONE \_\_\_\_\_

FAX \_\_\_\_\_

EMAIL (required for course confirmation) \_\_\_\_\_

DEGREE \_\_\_\_\_

SPECIALTY \_\_\_\_\_

SUBSPECIALTY \_\_\_\_\_

DIETARY RESTRICTIONS (Please indicate any dietary restrictions on the registration form when you register.) \_\_\_\_\_

### Registration Fee Options

Please check appropriate boxes below

12th Annual NYU Radiology Alpine Imaging Symposium  
March 17–21, 2014

☐ **\$985** registration fee for physicians

☐ **\$785** discounted fee\*

#### Optional Printed Syllabus

☐ **\$30** additional fee

\* Discounted Fees apply to NYU School of Medicine alumni, M.D.s employed by the Dept. of Veterans Affairs, full-time active military personnel, technologists, current residents/fellows, Canadian and other non-US physicians.

### Methods of Payment

☐ Check in U.S. Dollars made payable to **NYU Department of Radiology**

☐ Credit Card Payment (see below)

### Payment by Credit Card

Bill to: ☐ Visa ☐ Mastercard ☐ American Express

Card Member's Name (*print carefully*) \_\_\_\_\_

Card # \_\_\_\_\_

Exp Date: Month/Year \_\_\_\_\_/\_\_\_\_\_

Amount to be Charged: \$ \_\_\_\_\_

Signature (*required to process*) \_\_\_\_\_

Fax Form to: (212) 263-3959

### If Sending Check, Please Mail to:

**Marisa Costello**  
Department of Radiology  
462 First Avenue  
OBH, C&D, Floor 1, Room 4  
New York, NY 10016

### Refund Policy:

If you need to cancel your enrollment, a \$75 service fee will be assessed for your tuition payment if written notice is received at least 30 days in advance and a \$150 service fee for cancellations made within 30 days. No refunds are possible if written notification is not sent.

### Course Cancellation Policy:

In the unusual circumstance that this course is cancelled, two weeks' notice will be provided and full tuition refunded. The NYU Post-Graduate Medical School is not responsible for any airfare, hotel or other costs incurred.

### Educational Needs

If there is a specific question or topic relating to this course, please submit it on the registration form or on the website when registering online.

### In Case of Questions, Contact:

**Michelle R. Koplik**, Director of CME at (212) 263-3936  
or email: [michelle.koplik@nyumc.org](mailto:michelle.koplik@nyumc.org)

**Marisa Costello**, Program Manager at (212) 263-0724  
or email: [marisa.bruno@nyumc.org](mailto:marisa.bruno@nyumc.org)



We hope you'll plan on joining us at one of these CME courses.  
[WWW.RADCME.MED.NYU.EDU](http://WWW.RADCME.MED.NYU.EDU)



Department of Radiology  
462 First Avenue  
OBH, C&D, Floor 1, Room 4  
New York, NY 10016

Non-Profit Organization  
U.S. Postage  
Permit #8167  
New York University

## 2013

DEC. 17-21 **32ND ANNUAL HEAD TO TOE IMAGING CONFERENCE**  
THE HILTON NEW YORK, NEW YORK, NY

## 2014

JAN. 27-31 **CLINICAL IMAGING SYMPOSIUM IN NEVIS**  
THE FOUR SEASONS NEVIS, CARIBBEAN

MARCH 17-21 **12TH ANNUAL ALPINE IMAGING SYMPOSIUM**  
WESTIN SNOWMASS, SNOWMASS, CO

MAY 19-21 **SPORTS MEDICINE IMAGING STATE OF THE ART**  
NYU LANGONE MEDICAL CENTER, NEW YORK, NY

MAY 22 **READ WITH THE EXPERTS:  
SPORTS MEDICINE IMAGING WORKSHOP 2014**  
NYU LANGONE MEDICAL CENTER, NEW YORK, NY

JUNE 23-27 **SUMMER RADIOLOGY SYMPOSIUM IN ARUBA**  
THE HYATT REGENCY, ARUBA

AUG. 4-8 **CLINICAL IMAGING SYMPOSIUM IN BANFF**  
FAIRMONT BANFF SPRINGS, BANFF CANADA

OCT. 20-24 **FALL RADIOLOGY SYMPOSIUM IN SANTA BARBARA**  
THE FOUR SEASONS SANTA BARBARA, CALIFORNIA

## 12th Annual NYU Radiology Alpine Imaging Symposium *at Snowmass • March 17-21, 2014*



The Department of Radiology Presents:

# 12th Annual NYU Radiology Alpine Imaging Symposium *in Snowmass*

Sponsored by the NYU Post-Graduate Medical School

March 17-21, 2014

The Westin Snowmass Resort  
Snowmass, CO

