

January 22 – 26, 2018

The Department of Radiology Presents:

NYU's Clinical Imaging Symposium in Oahu at Ko Olina

Provided by the NYU Post-Graduate Medical School

General Information

Target Audience

This course is designed for clinical radiologists in academic or private practice.

Learning Objectives

After participating in this activity, clinicians should be able to:

- Describe and develop a strategy to incorporate the American College of Radiology's position on the management of incidental findings in abdominal and pelvic imaging in clinical practice.
- Identify important neurological diagnosis which mimic acute stroke, based on both clinical and imaging features, in order to make the correct diagnosis.
- Describe the current application of US imaging for the diagnosis of musculoskeletal pathology, as well as its correlation to MR imaging.
- Describe the advantages and limitations of coronary CT angiography technology for the assessment of coronary artery disease and cardiac abnormalities.

Accreditation Statement

The NYU Post-Graduate Medical School is accredited by the Accreditation Council for Continuing Medical Education to provide continuing medical education for physicians.

Credit Designation Statement

The NYU Post-Graduate Medical School designates this live activity for a maximum of 21 *AMA PRA Category 1 Credits*[™]. Physicians should claim only the credit commensurate with the extent of their participation in the activity.

Statement of Need/Course Description

There are many recent technological advances in imaging techniques and protocols which can be applied to current clinical practice. Maintenance of certification requires continued review of essential imaging techniques in all areas of radiology, including: Abdominal, Emergency, Cardiac, Neuroradiology and Musculoskeletal Imaging. This course is designed to demonstrate a practical approach to image acquisition and interpretation in various clinical settings using current up-to-date imaging techniques, while decreasing patient radiation dose. Lecture topics include: management of incidental findings in the abdomen and pelvis, MSK MR Imaging, imaging stroke mimics, state of the art pelvic trauma imaging and coronary CT angiography. In addition to didactic lectures, several case-based sessions will also be included to cover: abdominal, neuro, cardiac and musculoskeletal imaging.

Disclosure Statement

The NYU Post-Graduate Medical School adheres to ACCME accreditation requirements and policies, including the Standards for Commercial Support regarding industry support of continuing medical education. In order to resolve any identified conflicts of interest, disclosure information is provided during the planning process to ensure resolution of any identified conflicts. Disclosure of faculty and commercial relationships, as well as the discussion of unlabeled or unapproved use of any drug, device or procedure by the faculty, will be fully noted at the meeting.

Special Needs

The Post-Graduate Medical School of the New York University School of Medicine, in compliance with the legal requirements of the Americans with Disabilities Act, requests any participant of this CME course who is in need of accommodation to submit written requests to our office at least one month prior to the course date.

Schedule

NYU's Clinical Imaging Symposium in Oahu at Ko Olina • January 22 – 26, 2018

Monday, January 22

Emergency & Cardiac

7:00 am

Meeting Registration & Breakfast

7:40 am

Welcome

7:45 am

Easily Missed Thoracolumbar Spine Injuries

Mark P. Bernstein, MD, FASER

8:30 am

Have You Met My Aunt Minnie? Interesting Cardiac Findings You Should Know!

Jill E. Jacobs, MD, FACR, FAHA

9:15 am

ER SAM Part 1
MDCT Multi-Trauma Imaging

Mark P. Bernstein, MD, FASER

10:00 am

Q & A with Coffee

10:15 am

The Beat Goes On: Coronary CT Angiography for the Evaluation of Coronary Artery Disease

Jill E. Jacobs, MD, FACR, FAHA

11:00 am

ER SAM Part 2
State of the Art Pelvic Trauma Imaging

Mark P. Bernstein, MD, FASER

11:45 am

Interesting Cases — Cardiac Imaging

Jill E. Jacobs, MD, FACR, FAHA

12:30 pm

Questions

1:00 pm

Adjourn

Tuesday January 23

MSK, Cardiac & Neuro

7:15 am

Breakfast

7:45 am

MSK SAM Part 1
MR Elbow

Gina A. Ciavarra, MD

8:30 am

Cardiac SAM Part 1
CT Imaging of Coronary Artery Anomalies: The Good, the Bad, and the Ugly

Jill E. Jacobs, MD, FACR, FAHA

9:15 am

Stroke Mimics

Rajan Jain, MD

10:00 am

Q & A with Coffee

10:15 am

MSK SAM Part 2
MR Ankle

Gina A. Ciavarra, MD

11:00 am

Cardiac SAM Part 2
CT Imaging of Vasculitis

Jill E. Jacobs, MD, FACR, FAHA

11:45 am

Spinal Cord Tumor Mimics

Rajan Jain, MD

12:30 pm

Questions

1:00 pm

Adjourn

Wednesday, January 24

NO FORMAL PROGRAM

Thursday January 25

Abdominal & MSK

7:15 am

Breakfast

7:45 am

Prostate MRI

Ankur M. Doshi, MD

8:30 am

MR Soft Tissue Tumors

Gina A. Ciavarra, MD

9:15 am

Body SAM Part 1
Management of Incidental Findings in the Abdomen and Pelvis

Ankur M. Doshi, MD

10:00 am

Q & A with Coffee

10:15 am

US/MR Correlation

Gina A. Ciavarra, MD

11:00 am

Body SAM Part 2
Renal and Adrenal Lesions

Ankur M. Doshi, MD

11:45 am

Interesting Cases — MSK Imaging

Gina A. Ciavarra, MD

12:30 pm

Questions

1:00 pm

Adjourn

Friday, January 26

Emergency, Neuro & Abdominal

7:15 am

Breakfast

7:45 am

Imaging Thoracic Trauma

Mark P. Bernstein, MD, FASER

8:30 am

Neuro SAM Part 1
Glioma WHO Classification Update

Rajan Jain, MD

9:15 am

Focal Liver Lesions

Ankur M. Doshi, MD

10:00 am

Q & A with Coffee

10:15 am

MDCT Maxillofacial Trauma

Mark P. Bernstein, MD, FASER

11:00 am

Neuro SAM Part 2
Imaging Of Sella and Supra-Sellar Region

Rajan Jain, MD

11:45 am

Interesting Cases — Abdominal Imaging

Ankur M. Doshi, MD

12:30 pm

Questions

1:00 pm

Adjourn

NYU Course Director

Mark P. Bernstein, MD, FASER

Clinical Associate Professor
of Radiology

NYU Faculty

Gina A. Ciavarra, MD

Assistant Professor of Radiology

Ankur M. Doshi, MD

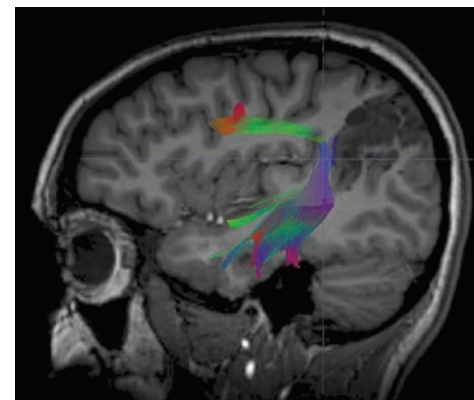
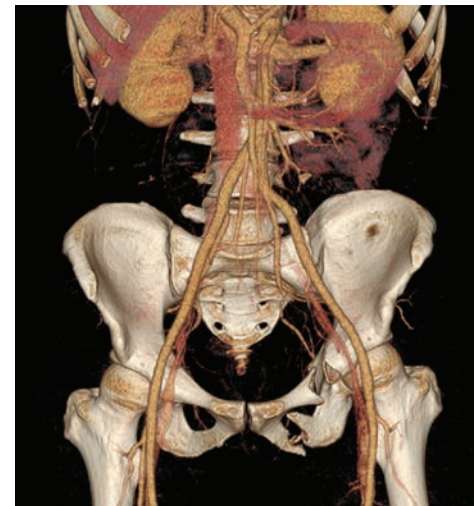
Assistant Professor of Radiology

Rajan Jain, MD

Associate Professor of Radiology

Jill E. Jacobs, MD, FACR, FAHA

Professor of Radiology



NYU's Clinical Imaging Symposium in Oahu at Ko Olina

January 22 – 26, 2018

Hotel Information

Four Seasons Resort Oahu at Ko Olina

A five-star resort community, Ko Olina is just 35 minutes from downtown Honolulu. The jewel in the crown of Ko Olina is the Four Seasons Resort, edged to the north by a pristine nature preserve and to the south by four beautiful beach coves — known as the Ko Olina Lagoons. Chic and light-filled with vast mountain and ocean views, the luxurious accommodations are surrounded by the resort's own beach, pools and lagoons.

Experience luxury lodging at Four Seasons Resort Oahu at Ko Olina, featuring beautiful mountain views or stunning panoramic ocean views from our naturally elegant accommodations — all with spacious private lanais. With 370 luxury guest rooms and suites, the Resort offers truly breathtaking views of the Pacific Ocean and Ko Olina's turquoise-blue waters with white sand beaches. At an average of 640 square feet, our spacious Oahu hotel rooms welcome with authentic Hawaiian style, inspired by nature and featuring traditional local woods and banana leaf headboards.

NYU Radiology Room Block

Don't miss this opportunity to stay at the Four Seasons Resort at Ko Olina as NYU has negotiated incomparable discounted room rates for the group. This is your chance to experience unparalleled luxury, service and paradise during peak season!

Radiology Room Rates

\$499 — RUN OF HOUSE (Mountain View)

\$549 — RUN OF OCEAN (A mix of Ocean View and Ocean Front)

SUITES — You also may inquire about Junior Suites @ \$750 and one-bedroom suites at \$1900, based upon availability.

NO RESORT FEE! Room rates include complimentary basic internet (up to 4 devices per room)

Taxes/Service Fees

The tax on the rooms is a total of 13.962%. The breakdown is 9.25% Transient Accommodations Tax and 4.712% State tax.

Porterage charges are \$12.00 plus 4.712% tax per person, round trip. A gratuity of \$6.50 plus 4.712% tax per day, per room for the Hotel's room attendants shall be added to the guest's folio.

Parking: \$20/day for NYU Guests (regularly \$40)

Cut-Off Date for Reservations — December 21, 2017

Rooms may sell out prior to this date. Reservations made after the reservation deadline will be based on hotel availability and the group rate cannot be guaranteed.

Deposit/Cancellation Policy

Deposit of 3 nights room/tax is required. Reservations may be canceled 45 day in advance without penalty. After 45 days, 3 nights deposit will be forfeited.

Hotel Reservations

Please visit the Four Seasons website below and enter the Corporate/Promo code:

www.fourseasons.com/oahu

Corporate/Promo code: CI0118NY

Guests may also email Reservations.Oahu@fourseasons.com or call the resort directly at 808-679-0079.

The Island of Oahu

Home to Hawaii's capital city of Honolulu, the island of Oahu swells with historic landmarks and attractions, adventures, and only-on-Oahu experiences. From the home base at Four Seasons Resort Oahu at Ko Olina, it's easy to explore so many of the island's main attractions, as well as a few locally favored sites.

From Waikiki to Pearl Harbor, to a hike up Diamond Head or the Manoa Falls Trail, to the Ka'a'awa Valley, home to Kualoa Ranch, to the Windward Coast and chocolate tours on the North Shore, to Iolani Palace near downtown Honolulu and one of the oldest Chinatown's in the US, to the Northshore where you will find the Pipeline, one of surfing's most sacred spots to all the spectacular beaches nearby, there is so much to explore on the island of Oahu!

Take the family out for a thrilling outrigger canoe ride on the ocean. Enjoy an intimate waterfall hike. Indulge in a peaceful massage on a private beach. Tantalize your taste buds with authentic shrimp shack plates and shave ice on the North Shore. Find a number of fun and exciting things to do in Oahu — golf, beach, pool, fishing and sailing, spa, tennis and more!

Traveling to Oahu, Hawaii

Convenient for international travelers, Oahu is the most air-accessible Hawaiian island, thanks to the many direct flights to Honolulu International Airport (HNL). It's less than 30 minutes by car from the airport to Four Seasons Resort Oahu at Ko Olina.

Luxury Car or SUV Transfers: The Resort offers transportation to and from the airport. Please ask the Concierge for limousine, sedan and taxi rates

Taxi & Car Rental: Taxi and rental services are available. Most major car rental firms operate at the airport. Enterprise is available at the Resort as well as at the airport. Please ask the Concierge for rental car and taxi rates.

MEETING REGISTRATION

Online Registration is Fast & Easy! Visit Our Website:

<http://www.med.nyu.edu/courses/cme/oahu18>

Registration Fees:

\$1025 Registration Fees for Physicians

\$825 Discounted Fee*

*Discounted fees apply to NYU School of Medicine alumni, M.D.'s employed by the Dept. of Veterans Affairs, full-time active military personnel, technologists, current residents/fellows, Canadian and other non-US physicians.

In Case of Questions, Contact:

Michelle R. Koplik, Director of CME

(212) 263-3936 or michelle.koplik@nyumc.org

Marisa Costello, Program Manager

(212) 263-0724 or marisa.costello@nyumc.org

Additional details about the meeting (hotel, travel, activities, etc.) can be found on the NYU website.

<http://www.med.nyu.edu/courses/cme/oahu18>

We hope you'll plan on joining us at one of these CME courses.
WWW.RADCME.MED.NYU.EDU



Department of Radiology
462 First Avenue
OBH, C&D, Floor 1, Room 4
New York, NY 10016

NON-PROFIT ORG.
U.S. POSTAGE
PAID
NEW YORK, NY
PERMIT #8167

2017

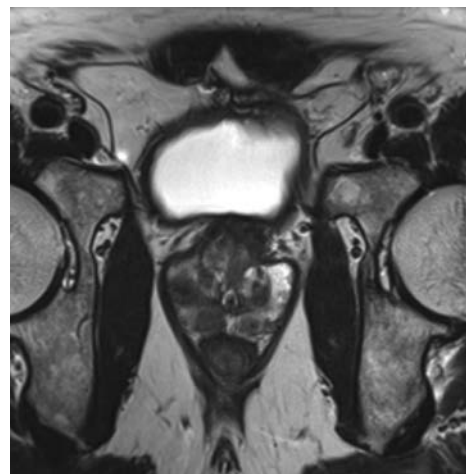
- OCT 23-27 **NYU's Fall Radiology Symposium in Charleston**
Belmond Charleston Place, Charleston, SC
- DEC 18-22 **NYU's 36th Annual Head to Toe Imaging Conference**
The New York Hilton Midtown, New York, NY

2018

- JAN 22-26 **NYU's Clinical Imaging Symposium in Oahu at Ko Olina**
Four Seasons Oahu at Ko Olina, Oahu, Hawaii
- MAR 19-23 **NYU's 16th Annual Alpine Imaging Symposium in Snowmass**
Viceroy Snowmass, Snowmass, CO
- MAY 21-23 **NYU's Advanced Imaging of the Musculoskeletal System with an Emphasis on Sports Injuries 2018**
NYU Langone Medical Center, New York, NY
- MAY 24 **NYU's Hands-On MSK Ultrasound Workshop 2018**
NYSIM Center, Bellevue Hospital, New York, NY
- JUL 16-20 **NYU's Summer Radiology Symposium at the Sagamore**
The Sagamore Resort, Lake George, NY
- AUG 6-10 **NYU's Clinical Imaging Symposium in Banff**
The Fairmont Banff Springs, Banff, Canada
- DEC 17-21 **NYU's 37th Annual Head to Toe Imaging Conference**
New York Hilton Midtown, New York, NY



Four Seasons Resort, Oahu at Ko Olina



January 22-26, 2018

The Department of Radiology Presents:

NYU's Clinical Imaging Symposium in Oahu at Ko Olina

Provided by the NYU Post-Graduate Medical School