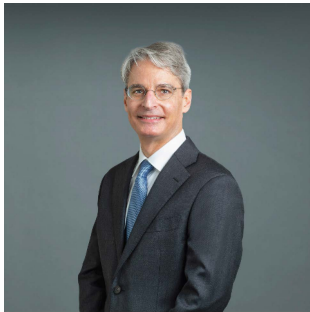


Center for Psychedelic Medicine Bios



Michael Bogenschutz, MD

Dr. Bogenschutz is the Director of the NYU Langone Center for Psychedelic Medicine, and a Professor of Psychiatry at NYU Grossman School of Medicine. He began conducting clinical research with psychedelics in 2011, and has published extensively on topics related to psychedelics and addiction. He published the first contemporary pilot study of psilocybin-assisted therapy for alcohol use disorder in 2016, and followed it up with a large randomized controlled trial, published in 2022. On the strength of those findings, Dr. Bogenschutz is now continuing that line of research as the Lead Investigator of a large multisite RCT of psilocybin for AUD, sponsored by B.More.

Dr. Bogenschutz is also the NYU site PI for MAPS-sponsored phase II and III trials of MDMA-assisted psychotherapy for PTSD, an NIDA-sponsored trial of psilocybin-assisted therapy for smoking cessation. He is also conducting NIH-funded studies of cannabidiol and topiramate for AUD and PTSD, and is developing further clinical and mechanistic studies of psychedelics such as psilocybin and MDMA. Before joining the faculty of NYU in 2015, he was the Principal Investigator of the Southwest Node of the NIDA Clinical Trials Network and a Professor at the University of New Mexico Health Sciences Center, where he was Vice-Chair and Division Director for Addiction Psychiatry, and Vice Chair for Clinical Research in the Department of Psychiatry..



Stephen Ross, MD

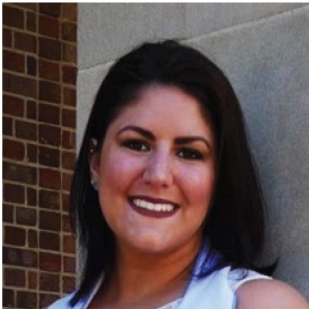
Dr. Stephen Ross is the Associate Director of the NYU Langone Center for Psychedelic Medicine, and the Director of the NYU Psychedelic Medicine Research Training Program. He is a Research Associate Professor of Psychiatry and Child & Adolescent Psychiatry at the NYU Grossman School of Medicine, and a founding member of the NYU Psychedelic Research Group, which preceded the establishment of the CPM. His primary research interests include the treatment of addiction, the interface between pain and addiction, and the development of novel interventions for treating personality disorders and psychological distress in patients with life-threatening illnesses.

Dr Ross has been the Principal Investigator (PI) on several recent and ongoing trials of psychedelic-assisted therapy at NYU. He led a groundbreaking trials of psilocybin-assisted therapy for anxiety and existential distress in patients with life-threatening cancer, and is now following up those findings with a large, multisite, randomized controlled trial sponsored by the National Cancer Institute. He was the site PI in a Phase 2, multisite trial of psilocybin treatment for major depressive disorder, and led a study investigating the effects of psilocybin on religious professionals. Dr. Ross is an expert in cannabinoid therapeutics, is the Principal Investigator on a NIDA funded study of CBD administration in patients with chronic radicular pain on chronic opioid therapy. He has also been a co-PI and study therapist on trials of psilocybin-assisted therapy for alcohol use disorder and MDMA-assisted therapy for PTSD.



Denise Balili, MS

Denise Balili is the Research Project manager at the NYU Center for Psychedelic Medicine. After joining the team in August 2021, she has maintained a leadership role in the administration of the CPM, where she oversees all of the Center's clinical research studies, managing budgets, regulatory issues, and staffing, while providing guidance and supervision to the growing team of Research Coordinators and Research Data Associates. She had extensive research experience before joining the Center, and earned her Master's degree in Clinical Trials Science from Rutgers University, with a concentration in Regulatory Affairs.



Corryn Chaimowytz, BS

Corryn Chaimowitz is the Recruitment Coordinator for the Psychedelic Research Training Program at the NYU Center for Psychedelic Medicine. She is also the lab manager for the laboratory of Dr. Tanya Sippy, supporting preclinical research investigating the effects of LSD and BOL-148/2-bromo-LSD on alcohol preference and related neurocircuitry. Corryn earned a BS in Neuroscience and Psychology from the University of North Carolina at Chapel Hill, where she facilitated research investigating the neuroscience of reward-seeking and consummatory behaviors in binge-drinking.



Holly Duane, LCSW

Holly Duane is a Licensed Clinical Social Worker who has been working for NYU as a psychedelic therapist since 2016. She is one of the most experienced psilocybin therapists in the country, having worked as a lead therapist on the large phase 2 trial of psilocybin-assisted therapy for alcohol use disorder, and on a trial investigating the effects of psilocybin treatment on religious professionals. She also has extensive experience as an MDMA therapist, having worked on both Phase 3 trials of MDMA-assisted therapy for PTSD. She also serves as a MAPS supervisor for new MDMA therapists.



Noam Goldway, PhD

Dr. Noam Goldway received his B.S. in Mind and Cognition Studies from Tel Aviv University and his Ph.D. from the Sagol School of Neuroscience at Tel Aviv University. His thesis focused on the neural representations of embodied emotion and the effect of psychoactive pharmacology on such representations. Dr. Goldway is now a postdoctoral fellow in the Department of Psychology at NYU. His research implements computational tools to investigate cognitive flexibility under psychedelics and across development.



Xiaojue Hu, MD

Dr. Xiaojue Hu is a psychiatrist and clinician-researcher at the NYU Center for Psychedelic Medicine, and a Clinical Assistant Professor of Psychiatry at the NYU School of Medicine. At the CPM, she was a co-investigator and lead therapist on a large multisite trial investigating the impact of psilocybin-assisted therapy on major depression. She is currently involved on a number of current and upcoming clinical trials, including cannabidiol for radicular pain, psilocybin-assisted therapy for cancer-associated existential distress, and psilocybin-assisted therapy for alcohol use disorder.

Dr. Hu completed residency training in Psychiatry at NYU, before completing fellowship training in Psychosomatic Medicine. She is a graduate of the Program in Liberal Medical Education at Brown University, where she received her MD degree and a BA in Comparative Literature.

Outside NYU, Dr. Hu practices integrative psychiatry and psychotherapy in a group private practice, collaborating with nutritional psychiatrist Dr. Drew Ramsey. Fluent in Mandarin, she has experience in cultural psychiatry, having served diverse immigrant communities. She takes a holistic, culturally sensitive approach to her clinical practice of psychiatry, ketamine-assisted psychotherapy, and psychedelic integration. She also advises psychedelic therapy trainees in her roles as a Trainer and Mentor at Fluence.



Jessica Hawkins

Jessica Hawkins is a Research Coordinator at the NYU Center for Psychedelic Medicine, where she joined the team in 2024. She is currently working with Dr. Stephen Ross on a new trial testing the Safety and Efficacy of RE104 (a prodrug that is converted into 4-OH-DiPT, a psilocybin-like compound, after administration) in Postpartum Depression. Jess has extensive research experience in cancer-related clinical trials and psychological studies. She earned her BA in Psychology at Louisiana Tech University, and an MA in General Psychology at New York University.



Samantha Khan, MPH

Samantha Khan is a Research Coordinator at the NYU Center for Psychedelic Medicine, where she joined the team in 2021. She coordinates multiple trials investigating MDMA-assisted psychotherapy for the treatment of PTSD. She is also the Research Coordinator for the NYU site of a large multisite trial of psilocybin-assisted therapy for smoking cessation.

Sam has extensive research experience working on social psychology and community health projects in the United States and abroad. A first-generation college graduate, she earned her BA from the University of Rochester before going to the University of Michigan, where she earned her MPH in Health Behavior & Health Education, with a specialization in Gender, Sexuality and Population Health.



Jillian Kelly

Jillian Kelly is a Research Data Associate at the Center for Psychedelic Medicine, where she joined the team in October 2024. She collaborates with Dr. Ross and CPM Research Coordinators on trials investigating psilocybin's effects on Major Depressive Disorder and its efficacy in treating psychiatric and existential distress in patients with advanced cancer. Previously, Jillian studied Psychology at UCLA, where she worked in a health psychology lab that investigated issues such as stress, eating behaviors, and weight stigma.



Eli Mitnick

Eli Mitnick is a Research Coordinator at the NYU Center for Psychedelic Medicine. He is currently the coordinator for the NYU site of a multicenter, Phase 3 trial evaluating the safety and efficacy of psilocybin for adults with Major Depressive Disorder. Eli earned his B.S. at Brown University, where he majored in psychology and worked as a research assistant in the Pediatric Anxiety Research Center at Bradley Hospital as well as in the Brown Language and Thought Lab. After graduation, he served as the Lab Manager in a developmental psychology lab at NYU, before joining the Center of Psychedelic Medicine in August of 2024.



Kelley O'Donnell, MD, PhD

Dr. Kelley O'Donnell is a board-certified psychiatrist and an Assistant Professor of Psychiatry at the NYU School of Medicine, where she is the Director of Clinical Training at the NYU Langone Center for Psychedelic Medicine.

Dr. O'Donnell earned her BA in the Great Books program at St. John's College in Annapolis, and her MD and PhD (Neuroscience) degrees at UCLA. She then completed a psychiatry residency at NYU, where she has been involved in psychedelic research since 2015. She has advanced training and extensive experience working with psilocybin, MDMA, and ketamine. In addition to her work as a psychedelic therapist, clinical supervisor, and co-investigator on a number of clinical trials at the Center, she is involved in psychedelic curriculum development initiatives. She also teaches extensively on topics related to psychedelic medicine and integrative psychotherapy. Outside of NYU, Dr. O'Donnell is a Lead Educator and Consultant with the MDMA Therapist Education Program at Lykos Therapeutics, and she is on the faculty of the psychedelic therapist training programs at the Polaris Insight Center and the Integrative Psychiatry Institute. She maintains a private practice in Manhattan.



Broc Pagni, PhD

Dr. Broc Pagni is a post-doctoral cognitive neuroscientist at the NYU Langone Center for Psychedelic Medicine. His research is supported by the Psychedelic Research Training Program, and is focused on identifying therapeutic psychological and neural mechanisms of psychedelic-assisted treatments. Dr. Pagni is currently using functional MRI (fMRI), computational modeling, and neuropsychological testing to elucidate the therapeutic correlates of psilocybin-assisted treatment in patients with alcohol use disorder. Before joining NYU, he received his PhD in Neuroscience from Arizona State University, where he used fMRI and EEG to characterize the neural mechanisms underlying the therapeutic effect of mindfulness meditation in adults with autism spectrum disorder.



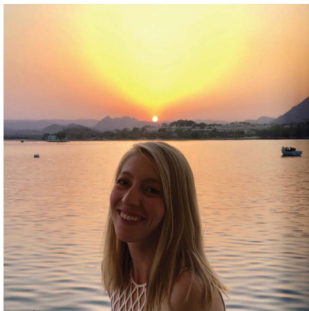
Petros Petridis, MD

Dr. Petros Petridis is interested in using neuroimaging and other advanced techniques to study the mechanisms underlying the therapeutic effects of psychedelic compounds in a variety of psychiatric conditions. He earned an MS in Biomedical Engineering at Columbia University, where his research was supported by the prestigious National Science Foundation Graduate Research Fellowship Program. He then earned his MD from Columbia University and completed his residency in psychiatry at NYU, where he conducted research using structural and functional MRI that laid the groundwork for his current studies at the Center for Psychedelic Medicine.



Daniel Roberts, MD, MSW

Dr. Dan Roberts is a board-certified psychiatrist and a Clinical Assistant Professor at the NYU School of Medicine. At the Center for Psychedelic Medicine (CPM), he is a study physician and lead therapist on a number of clinical trials exploring psychedelic-assisted therapy for a variety of therapeutic applications. He is highly active in the training and supervision of therapists learning psychedelic therapy, and is involved in a tri-institutional project with NYU, Yale, and Johns Hopkins to create a psychedelics curriculum for psychiatrists and other healthcare professionals. Outside the CPM, Dr. Roberts provides trauma-informed psychiatric care for patients at the NYU World Trade Center Health Program, and he is on the training faculty of the psychedelic education program Fluence. He also maintains a private psychiatry practice in Manhattan.



Ursula Rogers, MA

Ursula Rogers began working with the research group at the NYU Center for Psychedelic Medicine in 2018, first as a volunteer, then as a Research Data Associate. She has been involved in multiple studies using qualitative research methods to investigate the effects of psilocybin on religious professionals and on participants with alcohol use disorder (AUD). She has also been involved with research investigating the use of cannabidiol in the treatment of AUD. She is currently completing her pre-doctoral internship, but remains involved with the CPM group, and will be working with the adherence monitoring and clinical supervision of therapists on an upcoming multisite trial of psilocybin-assisted therapy for AUD.



Mariana Sari

Mariana Sari is the Administrative Coordinator at the NYU Center for Psychedelic Medicine, where she supports study investigators and staff in various administrative capacities. She can be contacted directly at Mariana.Sari@nyulangone.org.



Joshua, Siegel

Dr. Siegel is a psychiatrist with a doctoral degree in systems neuroscience from Washington University School of Medicine (WUSM). Dr. Siegel has 15 years of research experience in the fields of neuroimaging and neuropsychopharmacology. His primary research focus has been on using systems neuroscience to understand ketamine, psilocybin, and novel molecules that rapidly reverse mood disorders. This work aims to elucidate the complex interplay between neurotransmitters, neurotrophic stimulation, brain networks, mood, and human behavior.

In 2018, while at WUSM, Dr. Siegel began work on what would become Missouri's first human psychedelics clinical study, utilizing precision imaging to study acute and persisting effects of psilocybin on brain networks. He continued this work as junior faculty and also established Washington University's Program in Psychedelics Research, created a graduate course titled "Mechanisms of Rapid Antidepressants," and founded the WU Rapid Antidepressants Journal Club. In 2023-2024, Dr. Siegel completed a brief directorship of Translational Medicine at Sunovion/Sumitomo Pharma, where he led biomarker programs for early-phase compounds with potential in depression, Parkinson's Disease, epilepsy, and other CNS indications. In 2024, he joined the faculty at NYU Langone Center for Psychedelic Medicine and the Nathan Klein Institute for Psychiatric Research.



Tanya Sippy, MD, PhD

Dr. Tanya Sippy is an Assistant Professor in the Departments of Psychiatry and Neuroscience and Physiology at NYU, where she is Associate Director of the NYU Psychiatry Residency Research Track. At the NYU Center for Psychedelic Medicine, Dr. Sippy is a Principal Investigator and the Associate Director of the Psychedelic Medicine Research Training Program. Her research focuses on basic and translational aspects of sensorimotor transformation, as well as the neural mechanisms underlying the therapeutic effects of psychedelic drugs.

Dr. Sippy earned her MD and PhD degrees at Columbia University, then completed a postdoctoral fellowship in Switzerland at the École Polytechnique Fédérale de Lausanne before completing a psychiatry residency at NYU. She is the recipient of several grants and prizes including the National Institute of Mental Health Outstanding Resident Award Program, and the Burroughs Wellcome Fund Career Award for Medical Scientists.



Sydney Weiner

Sydney Weiner is a Research Coordinator at the NYU Center for Psychedelic Medicine, where she joined the team in 2024. She coordinates for a trial that is actively investigating the effects of using psilocybin-assisted psychotherapy to treat advanced cancer patients that is being conducted across two sites, NYU and the University of Colorado, Anschutz. Sydney has extensive research experience leading laboratory operations, conducting behavioral experiments and developing expertise in laboratory management and data analysis within the domains of psychology and neuroscience. She graduated from the University of Maryland, College Park with a B.S. degree in Psychology and a minor in Neuroscience before completing her M.A degree in Psychology at New York University, informally specializing in Clinical Neuroscience.



Richard Zeifman, PhD

Dr. Rick Zeifman joined the NYU Langone Center for Psychedelic Medicine in 2022, as the first post-doctoral fellow accepted to the Psychedelic Medicine Research Training Program. His research focuses on integrating psychotherapies with novel pharmacological interventions (including psychedelics), and using a multi-method approach to examine the mechanisms of change in psychotherapy. Dr. Zeifman has experience providing evidenced-based psychotherapies for individuals with a range of clinical presentations (e.g., post-traumatic stress disorder, anxiety disorders, and borderline personality disorder). He is a study therapist in an ongoing clinical trial examining MDMA-facilitated cognitive processing therapy for participants with PTSD. Before joining the CPM, Dr. Zeifman earned his PhD in Clinical Psychology at the Toronto Metropolitan University, and his clinical residency at the Centre for Addiction and Mental Health.